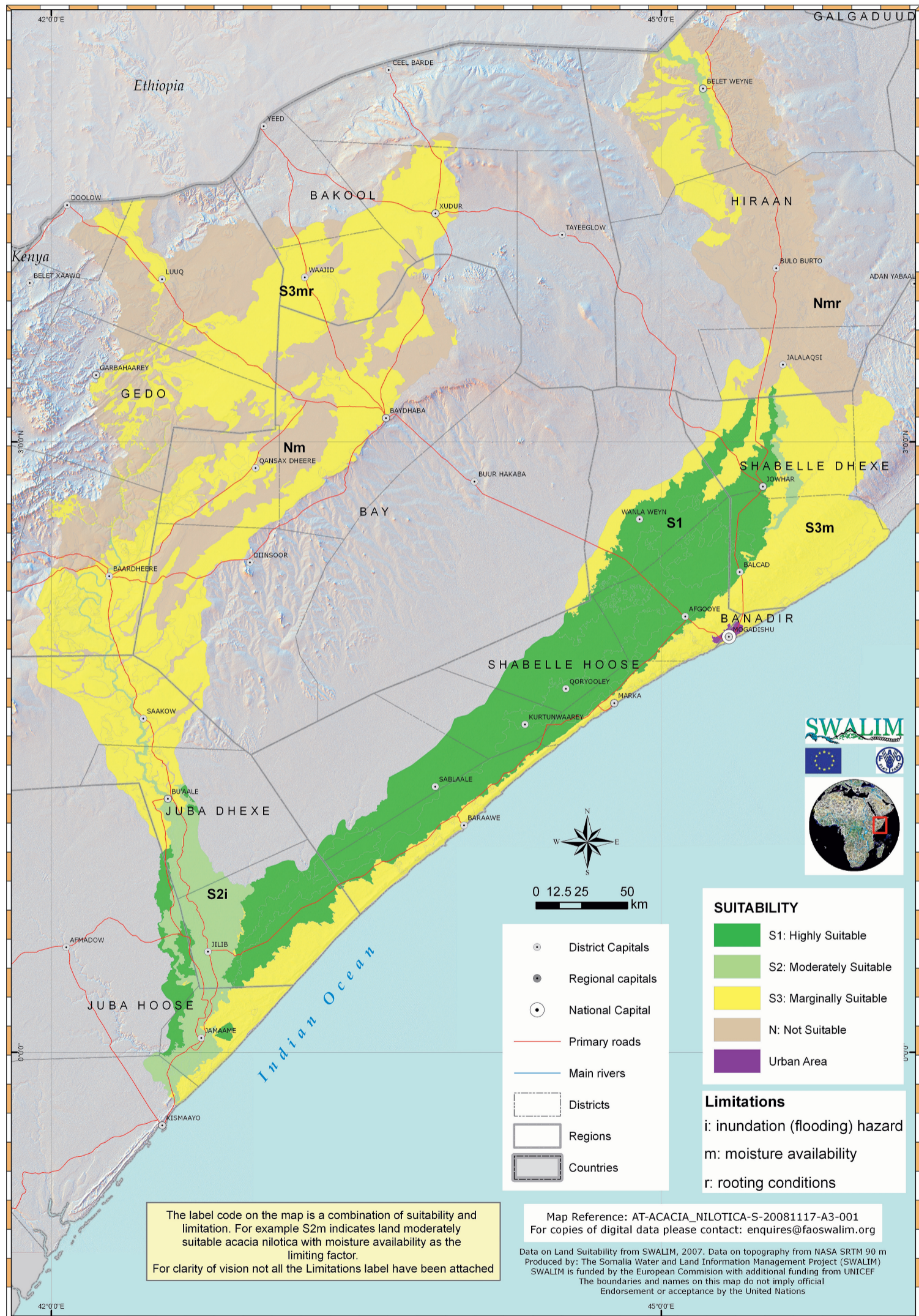


Land Suitability of the Southern Areas of Interest

Ku haboonaansho Dhul ee Aag Koofur la Darsay

Acacia nilotica - Tugaar



The label code on the map is a combination of suitability and limitation. For example S2m indicates land moderately suitable acacia nilotica with moisture availability as the limiting factor. For clarity of vision not all the Limitations label have been attached

Map Reference: AT-ACACIA_NILOTICA-S-20081117-A3-001
For copies of digital data please contact: enquires@faoswalim.org

Data on Land Suitability from SWALIM, 2007. Data on topography from NASA SRTM 90 m
Produced by: The Somalia Water and Land Information Management Project (SWALIM)
SWALIM is funded by the European Commission with additional funding from UNICEF
The boundaries and names on this map do not imply official
Endorsement or acceptance by the United Nations