



The Gu rains which started in the southern parts of Somalia continued to spread over the last three days. Some stations in the region have so far recorded light to moderate rains, while others remain dry since the onset of the season, in the first week of April. In the northern parts of the country the season has not yet started, with no rains recorded across the stations.

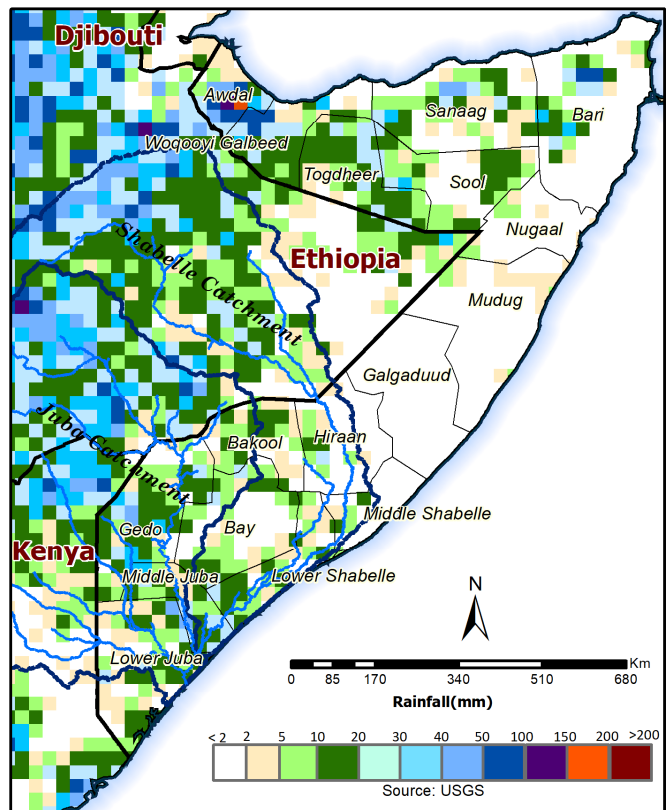
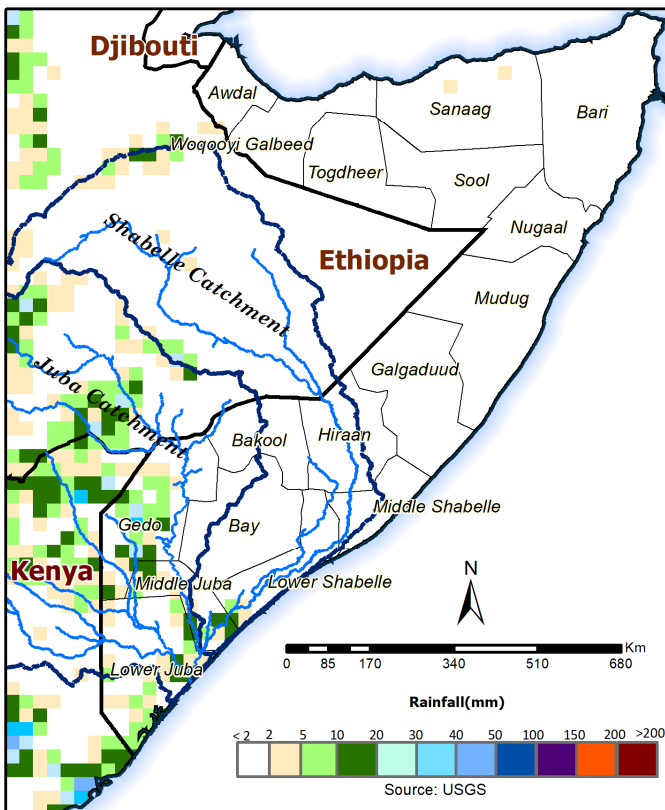
The cumulative rainfall forecast for this week indicates spread of the rains to the northern parts of the country. Light to moderate rains are expected over the southern and northern parts of the country, while the central regions remains dry over the same period. Some parts of Awdal Region may experience high localized rains of up to 100mm, according to the forecast. In the Ethiopian highland, whose rainfall is largely responsible for increase in river flow along the Juba and Shabelle Rivers inside Somalia, moderate to high rainfall is foreseen in the coming one week.

River levels along the Shabelle have increased slightly at Belet Weyne over the last 2 days, but remains low and below the normal for this period of the year. Along Juba River the levels are within normal for this period. Given the rainfall forecast, a slight increase in the levels for both rivers is expected with no risk of flooding over the next seven days.

Users are advised that this is a forecast and at times there may be discrepancies between estimates and actual amounts of rainfall received. Information on the forecast and observed river levels is updated daily and can be found on this link: <http://frrims.faoswalim.org>.

Map 1: 3 day cumulated rainfall forecast (13 - 15 Apr 2021)

Map 2: 7 day cumulated rainfall forecast (13 - 19 Apr 2021)



This update is produced by the: FAO - Somalia Water and Land Information Management—SWALIM Project.
For more information please contact swalim@fao.org or visit <http://www.faoswalim.org>

FAO SWALIM Technical Partners:



SWALIM is Managed by FAO and Currently Funded by:

