



Some stations in the southern parts of Somalia have recorded light rains over the last one week marking the start of the Gu rainy season which runs from March/April to June. The rains are expected to continue spreading in time and space during the coming weeks.

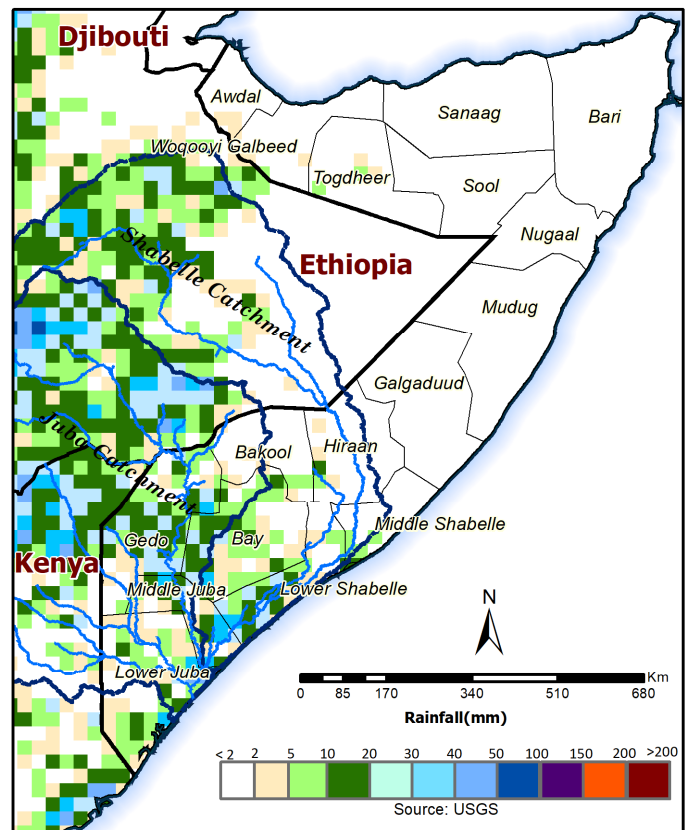
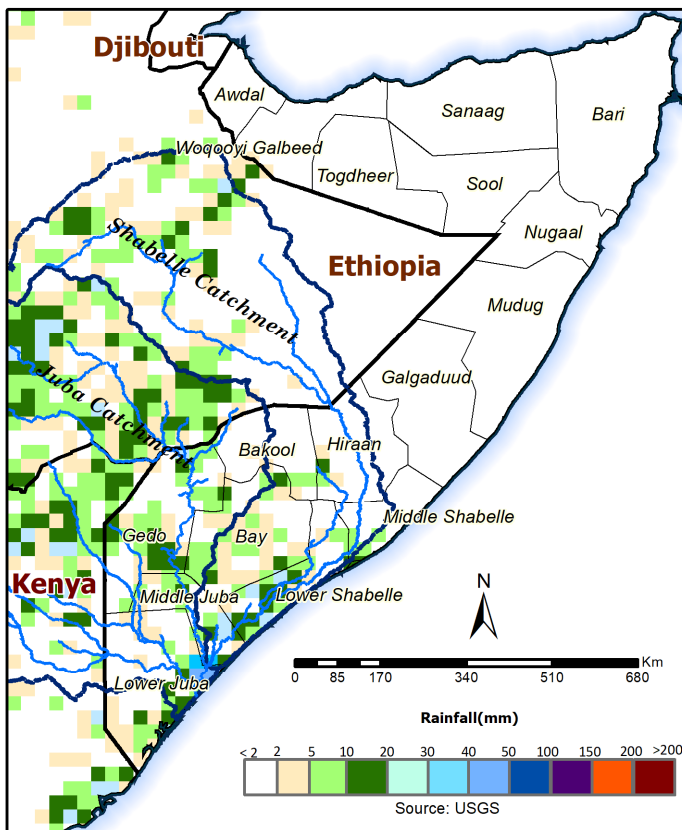
The cumulative rainfall forecast for this week indicates light to moderate rains over the southern parts of Somalia. The rest of the country will remain dry for the same period, apart from scattered light showers expected in north western areas. Moderate rains are also expected in the Ethiopian highland whose rainfall is largely responsible for increase in river flow along the Juba and Shabelle Rivers inside Somalia.

River levels are currently low along the Shabelle and Juba Rivers. In Shabelle, the levels are below normal for this period, with many middle and downstream sections reporting dry river beds. Along Juba River the levels are within normal for this period of the year. Given the rainfall forecast, the levels will start to increase towards the end of the coming week with no risk of flooding during the forecast period.

Users are advised that this is a forecast and at times there may be discrepancies between estimates and actual amounts of rainfall received. Information on the forecast and observed river levels is updated daily and can be found on this link: <http://frrims.fao.org>.

Map 1: 3 day cumulated rainfall forecast (09 - 11 Apr 2021)

Map 2: 7 day cumulated rainfall forecast (09 - 15 Apr 2021)



This update is produced by the: FAO - Somalia Water and Land Information Management—SWALIM Project.
For more information please contact swalim@fao.org or visit <http://www.fao.org/swalim>

FAO SWALIM Technical Partners:



SWALIM is Managed by FAO and Currently Funded by:

