



Somalia Flood Watch

Issued: 28th October, 2014



FLOOD WARNING LEVEL

KEY TO WARNING LEVELS

	Last Week	Coming Week
Shabelle		
Juba		

Severe Flooding Possible

Moderate Flooding (up to 5 year return period)

Minimal/No Flood Risk

During the week ending on 27th October, 2014, moderate to heavy rains were experienced in both Juba and Shabelle river basins inside Somalia and within the Ethiopian highlands leading to floods in some parts.

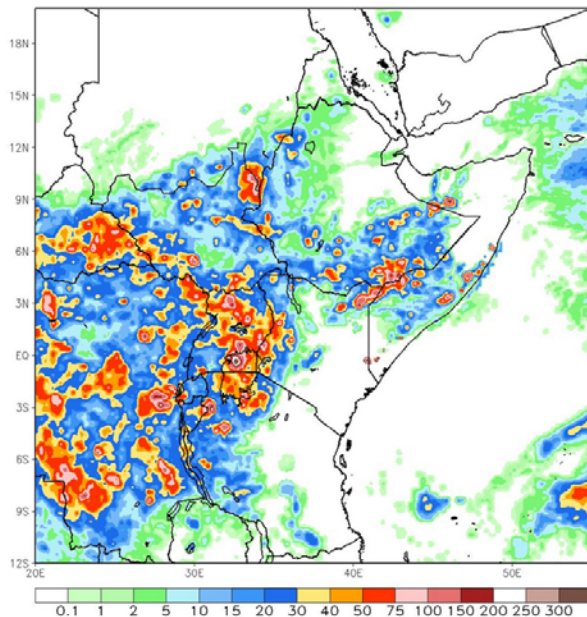
The worst flood affected areas along the Shabelle River are Belet Weyne in Hiraa region; and in Middle Shabelle region where there has been several river breakages. Along the Juba River, floods have been reported in Dollow (Gedo region), Jilib and Jamame in Lower Juba. Other reports also indicate localized flooding in Huduur in Bakool region following heavy rains in the area.

Station Name	Luuq	Bardheere	Bur Haka-ba	Wanle Weyne	Bulo Burti	Jowhar	Belet Weyne
Rainfall (mm)	13.0	19.0	69.0	46.0	36.0	20.0	46.0

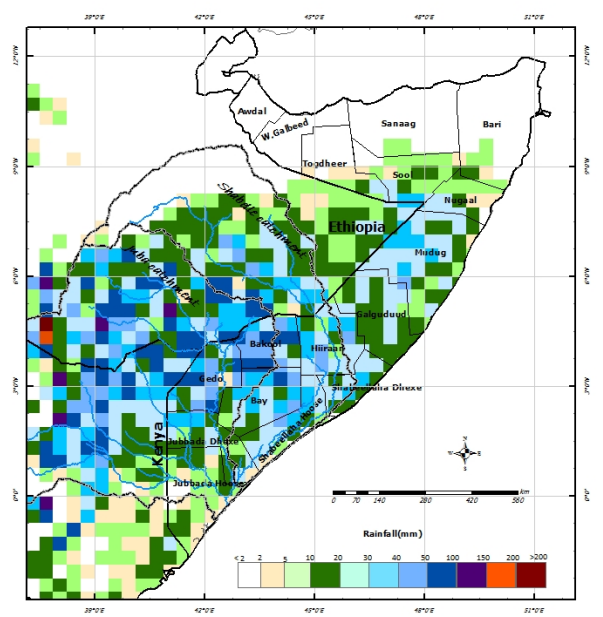
The rainfall forecast for the coming week (Map – 2) indicates more rains within the two basins both inside Somalia and within the Ethiopian highlands.

Given the rainfall forecast and the increasing river levels, the risk level of flooding along the Juba and Shabelle rivers remain **High** during the coming week.

Map –1: Total RFE: Week ending 27/10/2014



Map-2: 7-Day Rainfall Forecast: up to 03/11/2014



This bulletin is produced by the FAO Somalia Water and Land Information Management (SWALIM). For more information send an e-mail to SO-Hydro@fao.org or visit <http://www.faoswalim.org>

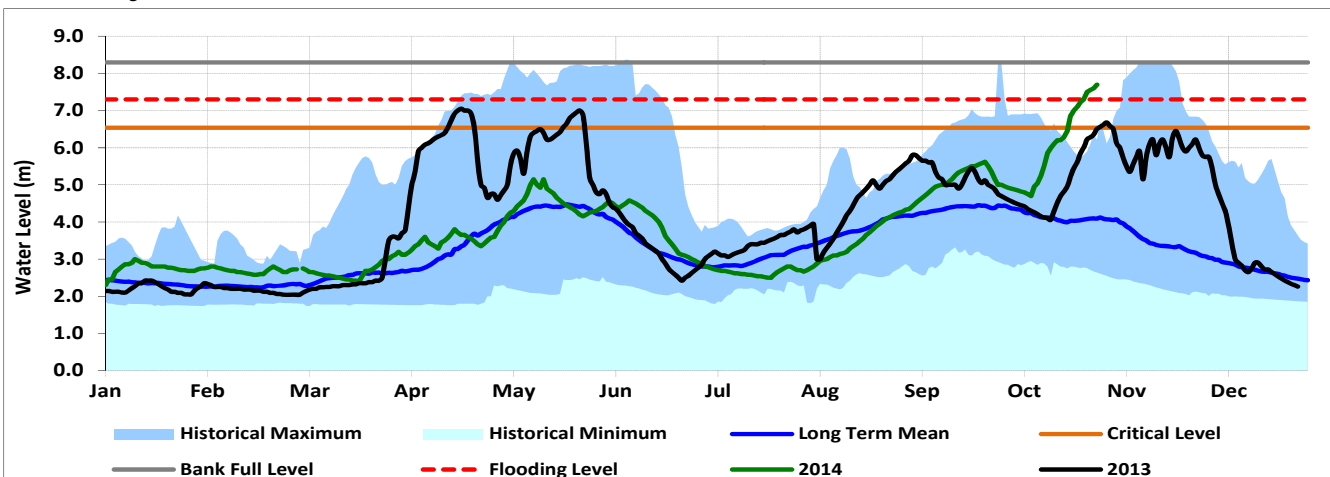
Technical Partners



SWALIM Funding Agencies



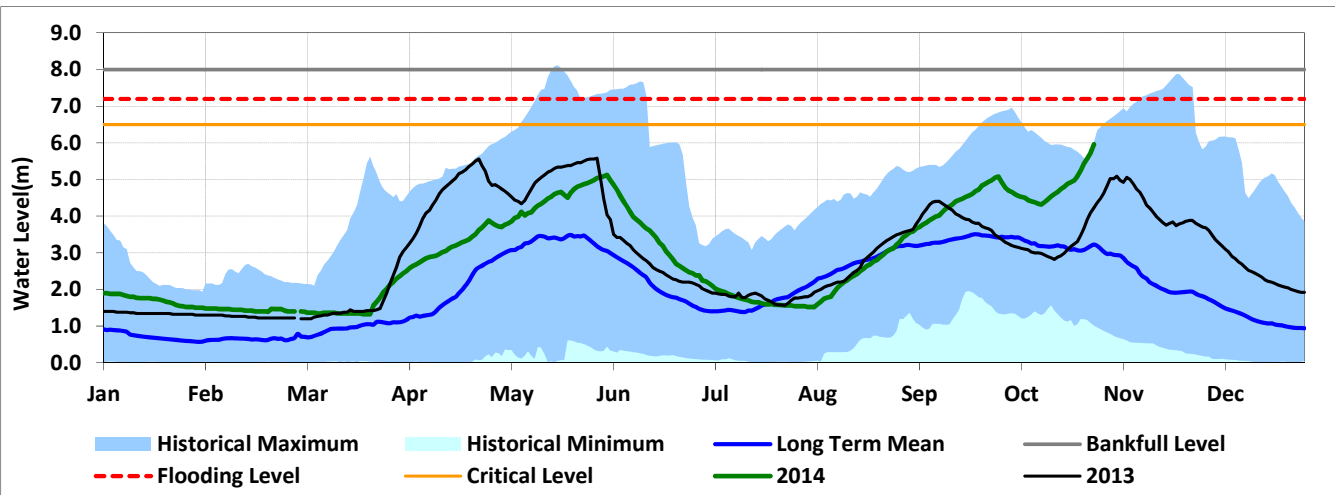
Belet Weyne



Date	Current river level	Relative position of current river level from:			
		Previous day	Low Flood Risk	Moderate Flood Risk	High Flood Risk
28-Oct-13	7.70	0.10	-1.80	-1.20	-0.40
27-Oct-13	7.60	0.05	-1.70	-1.10	-0.30
26-Oct-13	7.55	0.05	-1.65	-1.05	-0.25

Observed river levels at Belet Weyne continued to increase over the last week. Today's river level is 7.70m which is 0.40m above the high risk flood level. Field reports indicate flooding in the North Eastern parts of the town with several families having been affected.

Bulo Burti



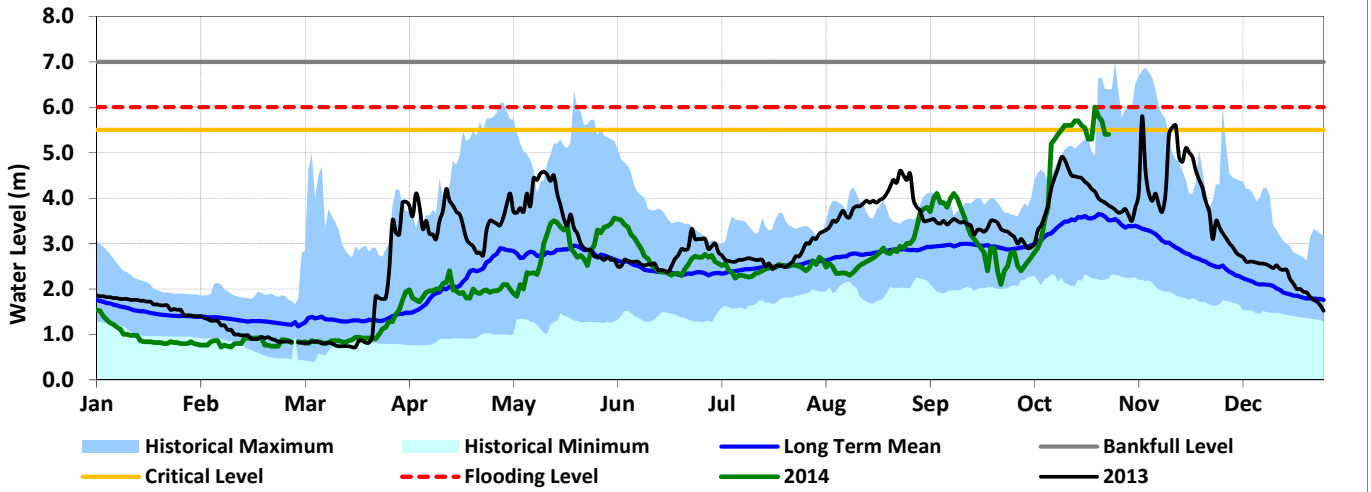
Date	Current river level	Relative position of current river level from:			
		Previous day	Low Flood Risk	Moderate Flood Risk	High Flood Risk
28-Oct-13	5.96	0.24	0.04	0.54	1.24
27-Oct-13	5.72	0.14	0.28	0.78	1.48
26-Oct-13	5.58	0.14	0.42	0.92	1.62

Observed river levels at Bulo Burti increased last week. Today's river level is 5.96m which is 1.24m below the high risk flood level.

Forecast for coming week for Shabelle

Given the rainfall forecast for coming week and the current observed river levels, the high risk of flooding remains during the forecast period especially in the lower reaches of the river.

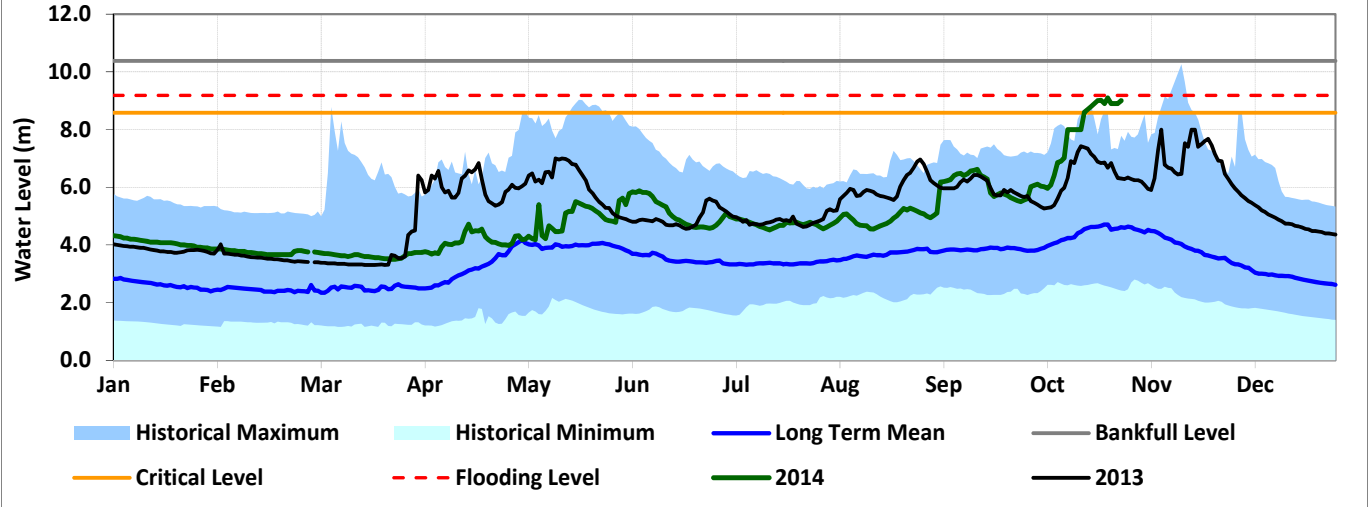
Luuq



Date	Current river levels		Relative position of current river levels from:		
	Levels	Previous day	Low Flood Risk	Moderate Flood Risk	High Flood Risk
28-Oct-13	5.40	0.00	-0.20	0.10	0.60
27-Oct-13	5.40	0.30	-0.20	0.10	0.60
26-Oct-13	5.70	0.10	-0.50	-0.20	0.30

Observed river levels at Luuq fluctuated over the last week. Today's river level is 5.40m which is 0.60m below the high risk flood level.

Bardheere



Date	Current river levels		Relative position of current river levels from:		
	Levels	Previous day	Low Flood Risk	Moderate Flood Risk	High Flood Risk
28-Oct-13	9.00	0.10	-0.82	-0.42	0.18
27-Oct-13	8.90	0.00	-0.72	-0.32	0.28
26-Oct-13	8.90	0.00	-0.72	-0.32	0.28

Observed river levels at Bardheere increased sharply over the last week. Today's river level is 9.00m which is 0.18m below the high risk flood level.

Forecast for coming week for Juba

Given the rainfall forecast for coming week and the current observed river levels, there is high risk of flooding during the forecast period especially in the lower reaches of the river.