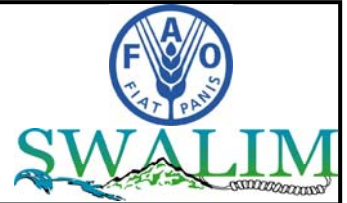


# Somalia Flood Watch

Issued: 25<sup>th</sup> November, 2014



## FLOOD WARNING LEVEL

	Last Week	Coming Week
Shabelle		
Juba		

## KEY TO WARNING LEVELS

Severe Flooding Possible

Moderate Flooding (up to 5 year return period)

Minimal/No Flood Risk

During the week ending on 24 November 2014, there was an increase of rainfall activities within the Juba and Shabelle river basins inside Somalia with most stations recording moderate to heavy rains. Bardheere in Gedo region recorded a total of 229mm in three consecutive days. There were isolated cases of localised flooding in Baidoa, Belet Hawac and Bardheere environs following heavy rains.

Station Name	Luuq	Bardheere	Bualle	Dollow	Jamame	Jowhar
Rainfall (mm)	58.0	229.0	58.0	53.0	87.0	5.0

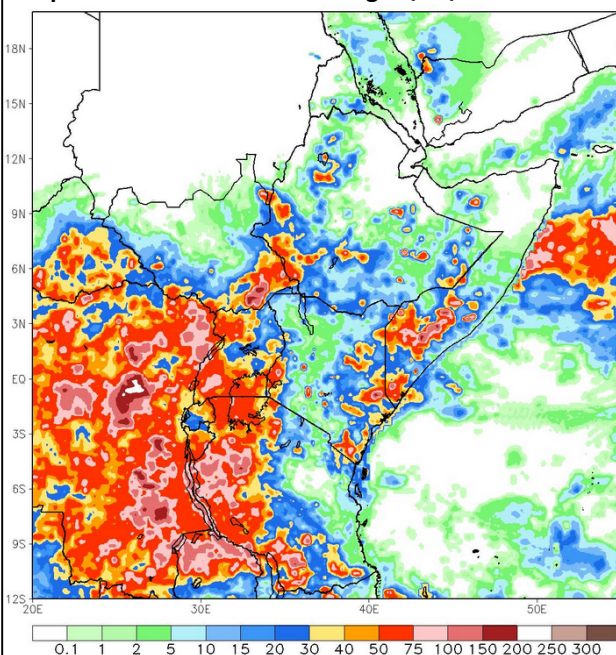
  

Station Name	Belet Weyne	Mataban	Jalalaqsi	Bulo burti	Wanle Weyne	Moga-dishu
Rainfall (mm)	31.0	90.0	30.0	21.0	35.0	39.0

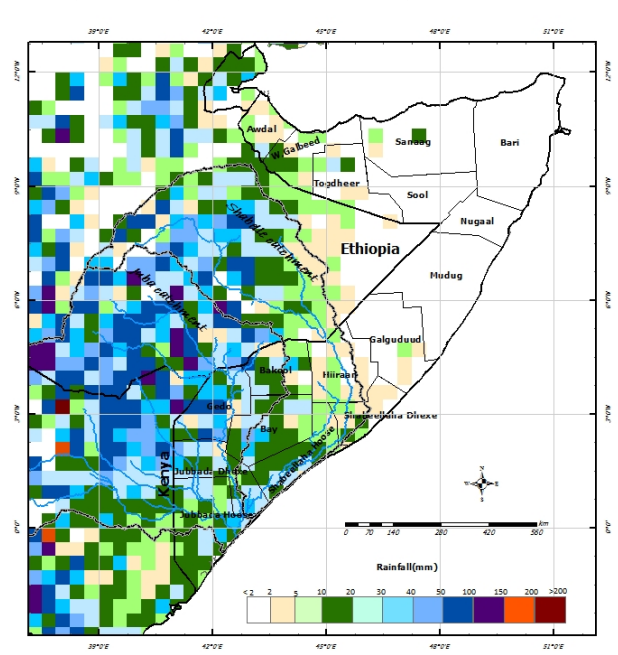
The rainfall forecast for the coming week (Map – 2) indicates moderate rains within the two basins both inside Somalia and within the Ethiopian highlands.

Given the prevailing wet soil moisture conditions and the rainfall forecast in the coming week, there remains a moderate risk level of flooding especially in the lower reaches where river levels are still high.

Map –1: Total RFE: Week ending 24/11/2014



Map-2: 7-Day Rainfall Forecast: up to 01/12/2014



This bulletin is produced by the FAO Somalia Water and Land Information Management (SWALIM). For more information send an e-mail to [SO-Hydro@fao.org](mailto:SO-Hydro@fao.org) or visit <http://www.faoswalim.org>

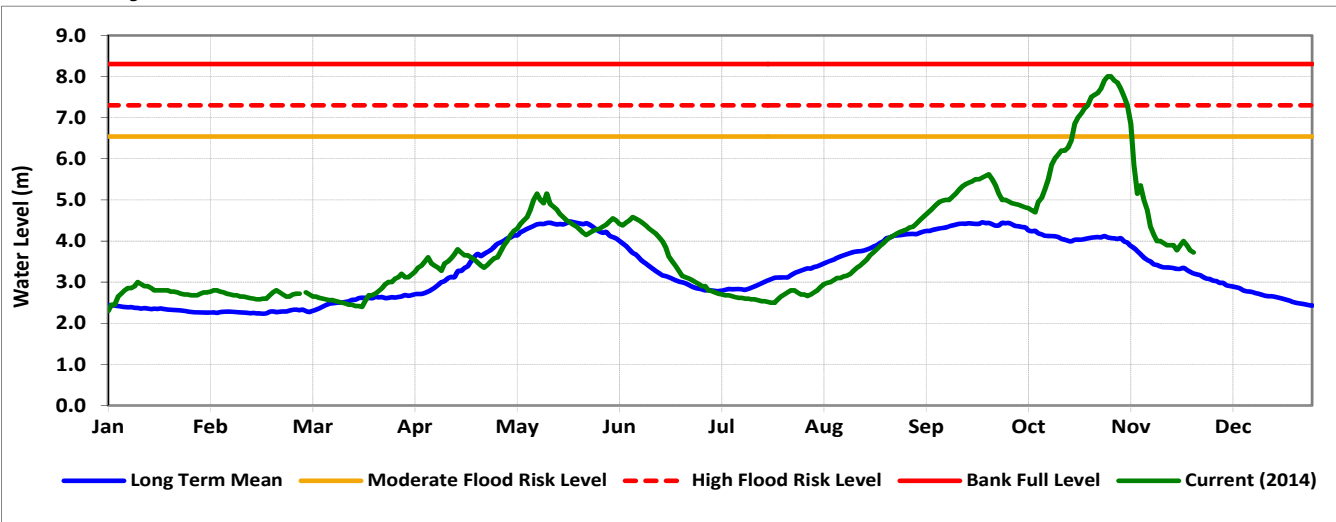
## Technical Partners



## SWALIM Funding Agencies



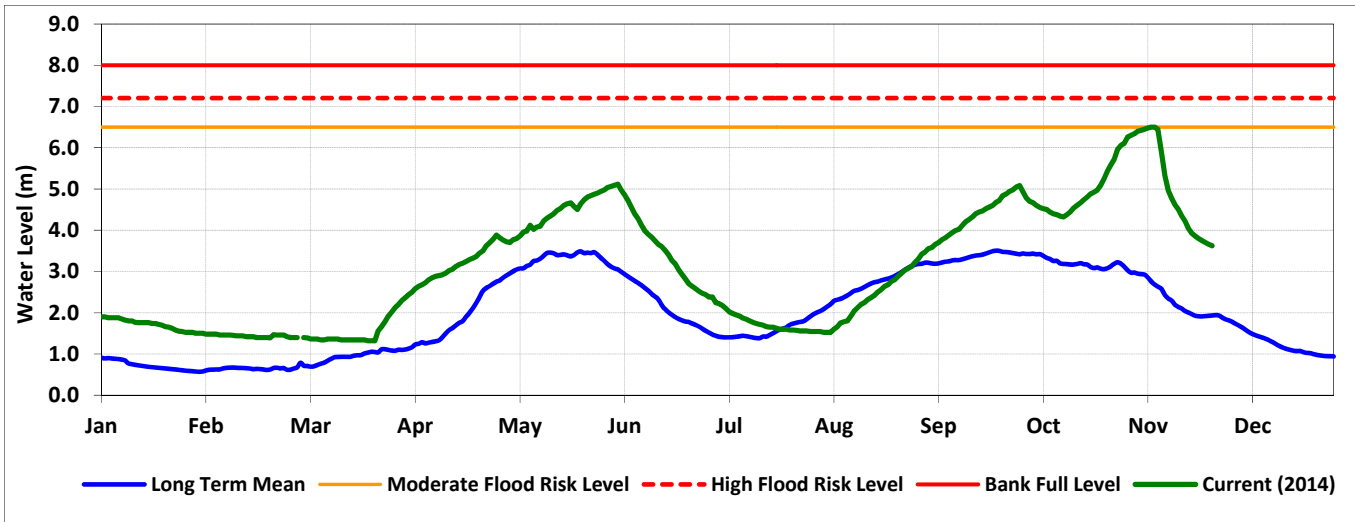
**Belet Weyne**



Date	Observed River Level (m)	Moderate Flood Risk Level (m)	High Flood Risk Level (m)
25- Nov-14	3.72	6.50	7.30

Observed river levels at Belet Weyne decreased slightly during the last one week.

**Bulo Burti**



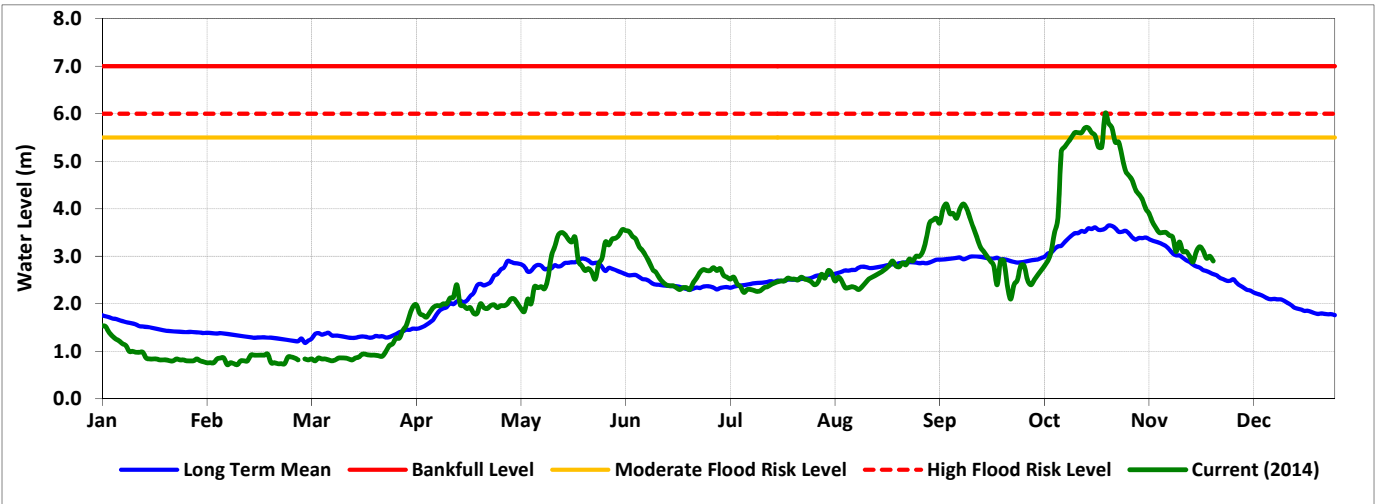
Date	Observed River Level (m)	Moderate Flood Risk Level (m)	High Flood Risk Level (m)
25-Nov-14	3.62	6.50	7.20

Observed river levels at Bulo Burti decreased over the last week. Today's river level is 3.62m which is 3.58m below the high risk flood level.

**Forecast for coming week for Shabelle**

The moderate risk of flooding remains in the lower reaches of the river.

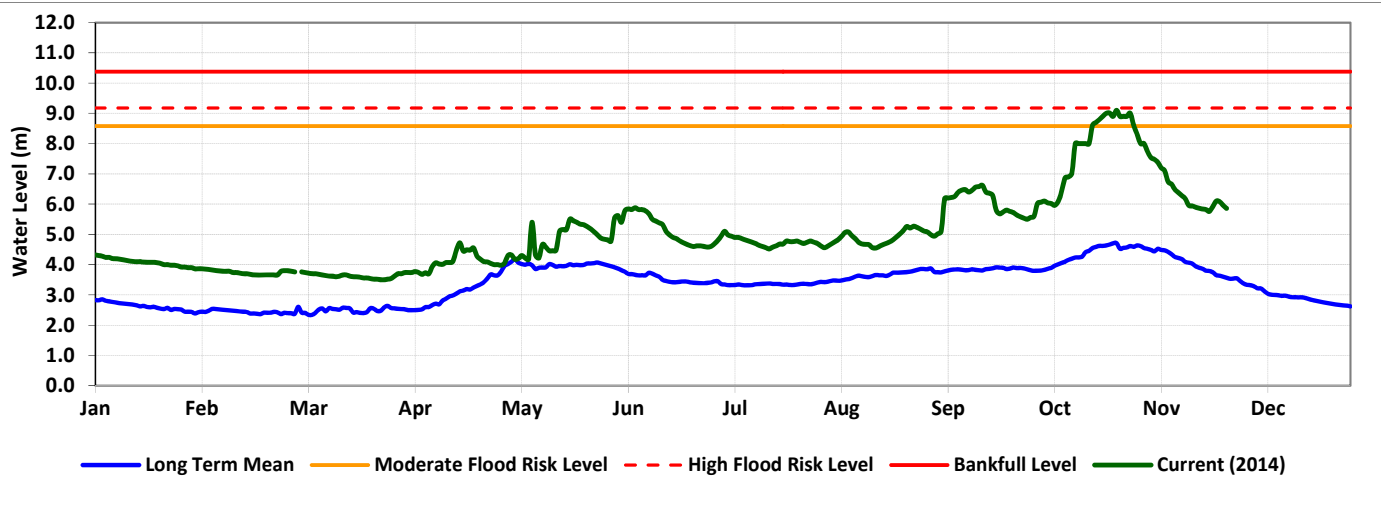
Luuq



Date	Observed River Level (m)	Moderate Flood Risk Level (m)	High Flood Risk Level (m)
25 -Nov-14	2.90	5.50	6.00

Observed river level at Luuq continued to decrease over the last week. Today’s river level is 2.90m which is 3.10m below the high risk flood level.

Bardheere



Date	Observed River Level (m)	Moderate Flood Risk Level (m)	High Flood Risk Level (m)
25 -Nov-14	5.86	7.42	8.20

Observed river levels at Bardheere fluctuated over the last week. Today’s river level is 5.86m which is 2.34m below the high risk flood level.

**Forecast for coming week for Juba**

The moderate risk of flooding remains in the lower reaches of the river.