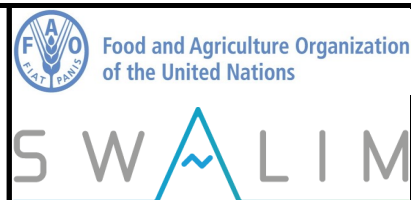


Somalia Flood Watch

Issued: 17 May 2016



FLOOD WARNING LEVEL

	Last Week	Coming Week
Shabelle		
Juba		

KEY TO WARNING LEVELS

- Severe Flooding Possible**
- Moderate Flooding (up to 5 year return period)**
- Minimal/No Flood Risk**

During the week that ended on 16th May 2016, there was a significant reduction of rainfall activities in most areas of Juba and Shabelle basins inside Somalia as well as the Ethiopian highlands. River levels remain high along the entire channels of the two rivers. The table below shows the total amounts received in some stations during the last week within the two basins.

Station Name	Luuq	Bardheere	Bur Hakaba	Dollow	Belet Weyne	Mataban
Rainfall (mm)	0.0	0.0	0.0	0.0	12.5	0.0

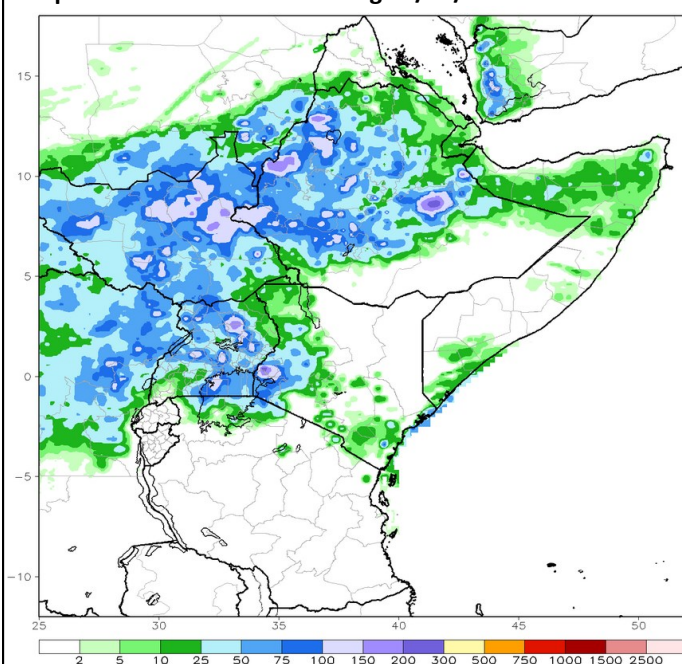
Station Name	Bulo Burti	Jowhar	Balcad	Mogadishu	Wanle Weyne	Bualle
Rainfall (mm)	10.0	17.0	0.0	7.0	0.0	34.0

Satellite rainfall estimates (Map-1) also indicates minimal rainfall amounts during the same period within the Juba and Shabelle basins. The rainfall forecast for the coming week (Map – 2) indicates a further reduction of rains in two river basins both in Somalia and within the Ethiopian highlands.

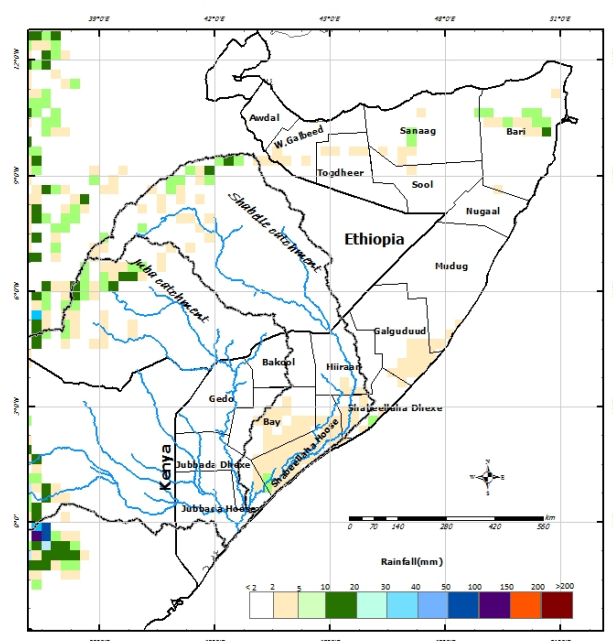
River levels have been increasing since mid April due to heavy rains received within the basins. Currently, the levels are above the normal at this time of the year at all monitoring stations along the two rivers. The levels are however expected to stabilize towards the end off the coming week given the foreseen reduction of rains in the basins.

The **high** risk of flooding along the two rivers has therefore changed to **moderate** risk given the foreseen reduction of rains and consequently decreased river levels. However, areas with existing open river may continue to flood if not closed.

Map –1: Total RFE: Week ending 16/05/2016



Map-2: 7-Day Rainfall Forecast: up to 22/05/2016



This bulletin is produced by the FAO Somalia Water and Land Information Management (SWALIM). For more information send an e-mail to SO-Hydro@fao.org or visit <http://www.faoswalim.org>

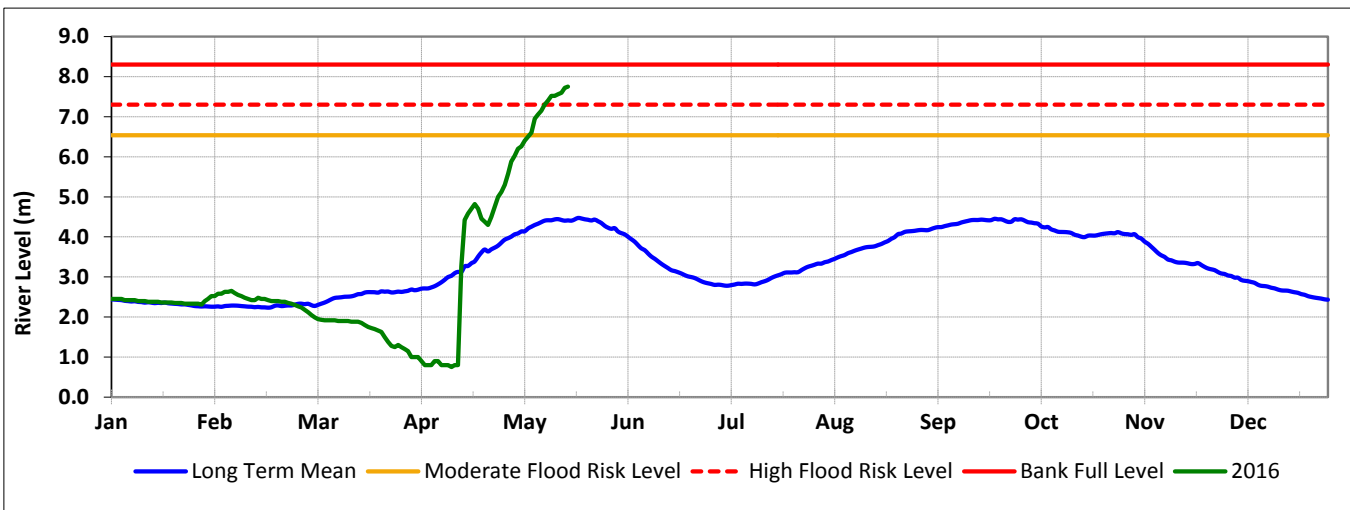
Technical Partners



SWALIM Funding Agencies



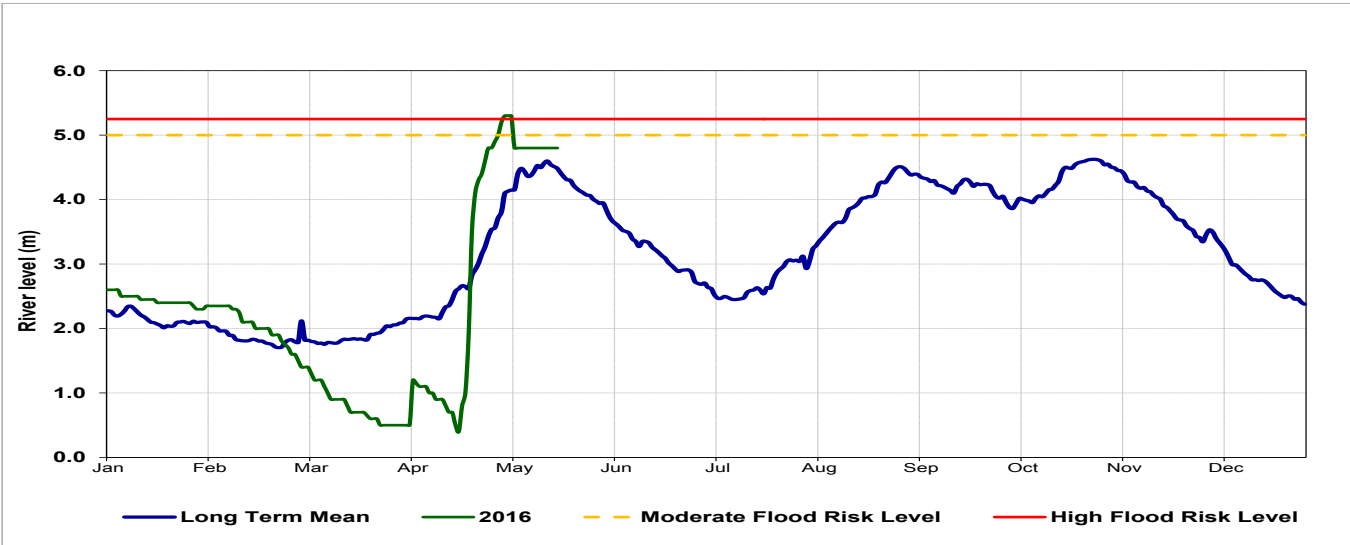
Belet Weyne



Date	Observed River Level (m)	Moderate Flood Risk Level (m)	High Flood Risk Level (m)
17/05/2016	7.75	6.50	7.30

Observed river levels at Belet Weyne increased sharply during the last week . Today’s river level is 7.75m which is above the high flood risk level.

Jowhar



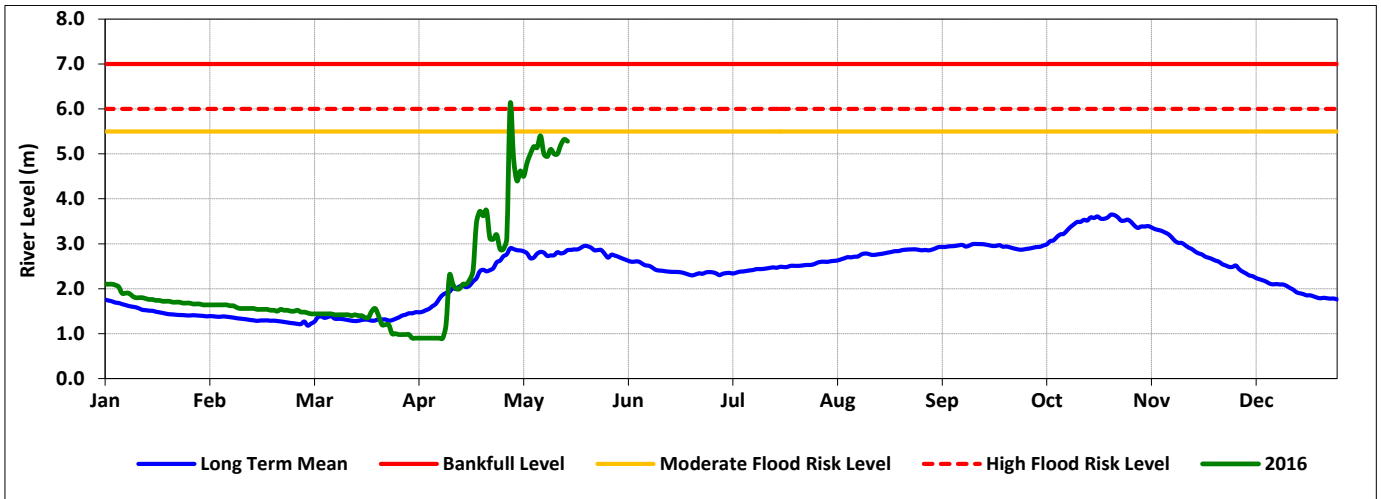
Date	Observed River Level (m)	Moderate Flood Risk Level (m)	High Flood Risk Level (m)
17/05/2016	4.80	5.00	5.25

Observed river levels at Jowhar remained high through out the week. Today’s river level is 4.80m which is a few centimetres from the high risk flood level.

Forecast for coming week for Shabelle

Observed river levels along the entire channel are high and have reached the high flood risk level at Belet weyne. There is therefore a high risk of flooding along the river in the coming week.

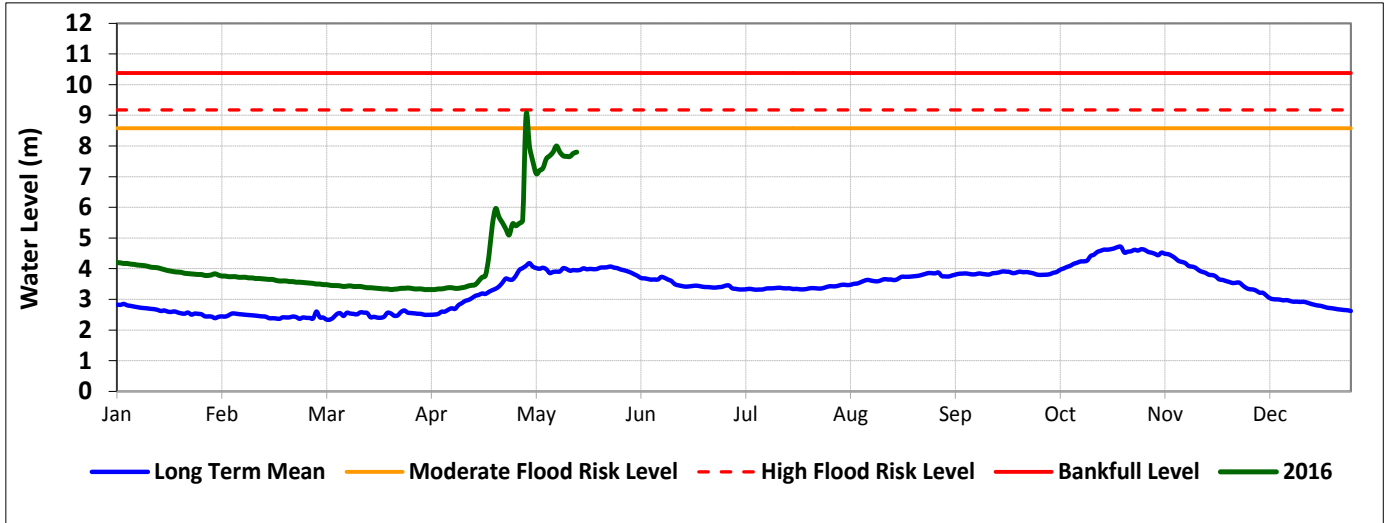
Luuq



Date	Observed River Level (m)	Moderate Flood Risk Level (m)	High Flood Risk Level (m)
17/05/2016	5.28	5.50	6.00

Observed river level at Luuq fluctuated over the last week. Today's river level is 5.28m which is a few centimetres below the moderate risk flood level.

Bardheere



Date	Observed River Level (m)	Moderate Flood Risk Level (m)	High Flood Risk Level (m)
17/05/2016	7.80	8.58	9.18

Observed river levels at Bardheere decreased at the beginning of last week and have increased slightly in the last few days. Today's river level is 7.80m which is 1.38m below the high risk flood level.

Forecast for coming week for Juba

Observed river levels are high along the Juba River and have reached moderate flood risk levels in the middle reaches. Given the high levels there is a high risk of flooding in the middle and lower parts of the Juba River.