



Somalia Flood Watch

Issued: 15th October, 2014



FLOOD WARNING LEVEL

	Last Week	This week	Next Week
Shabelle			
Juba			

KEY TO WARNING LEVELS

Severe Flooding Possible

Moderate Flooding (up to 5 year return period)

Minimal/No Flood Risk

During the week ending on 13th October, 2014, moderate to heavy rains were experienced in both Juba and Shabelle river basins inside Somalia and within the Ethiopian highlands. Some stations along the two rivers that recorded rains are as below:

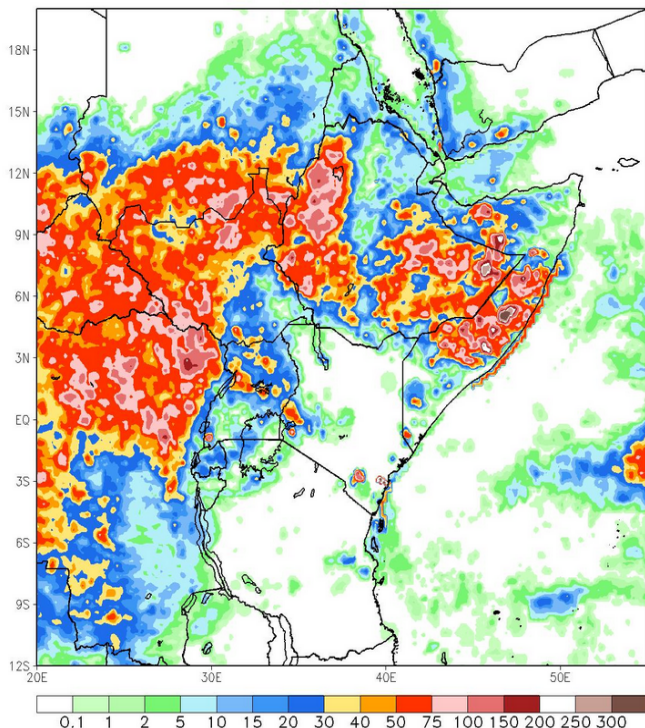
Station Name	Luuq	Dollow	Bualle	Belet Weyne	Bulo Burti	Jowhar	Bur Hakaba
Rainfall (mm)	28.0	70.0	43.0	72.0	45.0	22.0	34.0

The 7-day cumulative satellite rainfall estimate (RFE) image (Map – 1) indicates moderate to heavy rains were received within the Juba and Shabelle basins both in Somalia and within the Ethiopian highlands.

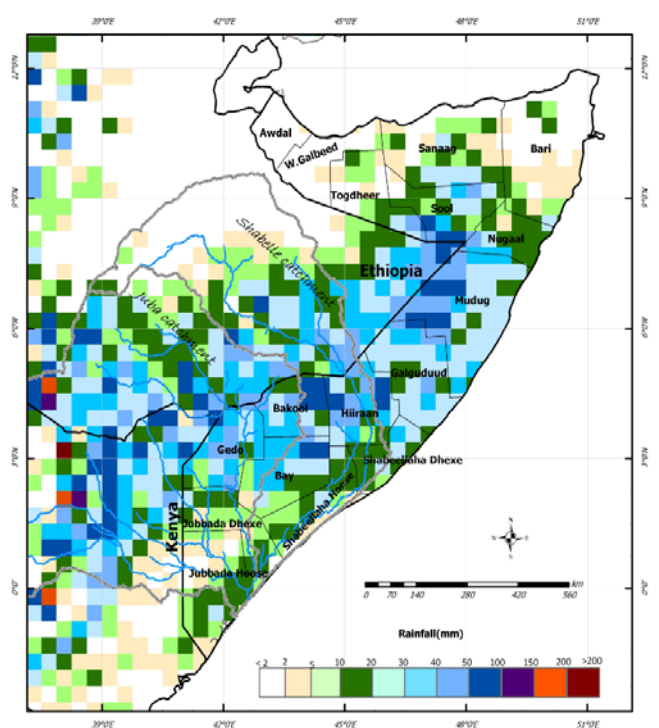
The rainfall forecast for the coming week (Map – 2) indicates more rains within the two basins both inside Somalia and within the Ethiopian highlands.

Given the rainfall forecast and the increasing river levels, the risk level of flooding along the Juba and Shabelle rivers changes from **Minimal** to **Moderate** during the coming week.

Map –1: Total RFE: Week ending 13/10/2014



Map-2: 7-Day Rainfall Forecast: up to 21/10/2014



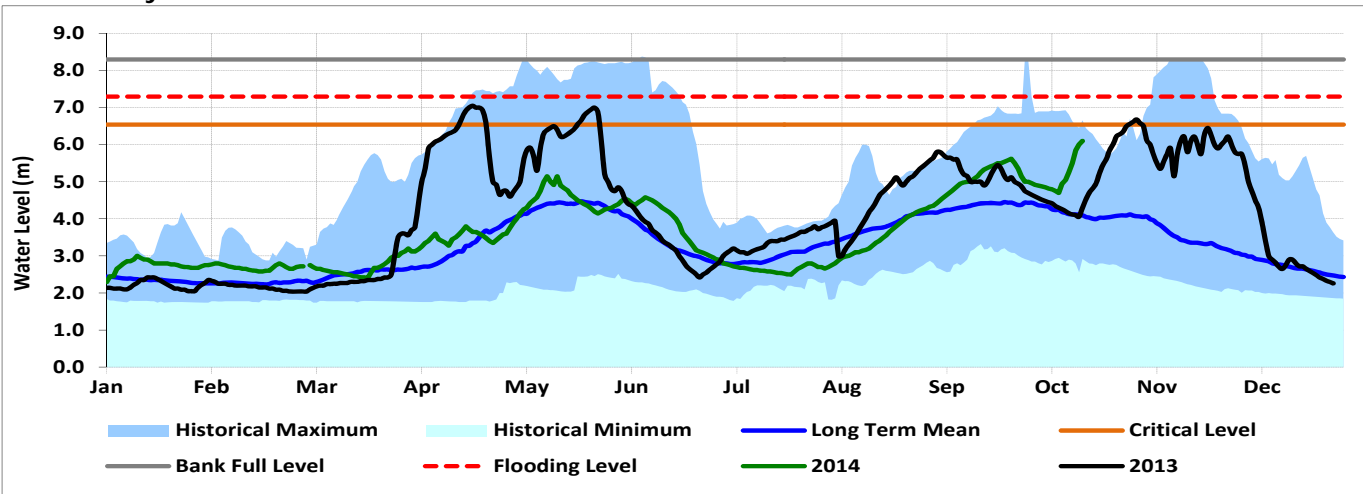
This bulletin is produced by the FAO Somalia Water and Land Information Management (SWALIM) Project, in collaboration with USGS and, FEWS NET Somalia.



For more information send an e-mail to SO-Hydro@fao.org or visit <http://www.faoswalim.org>



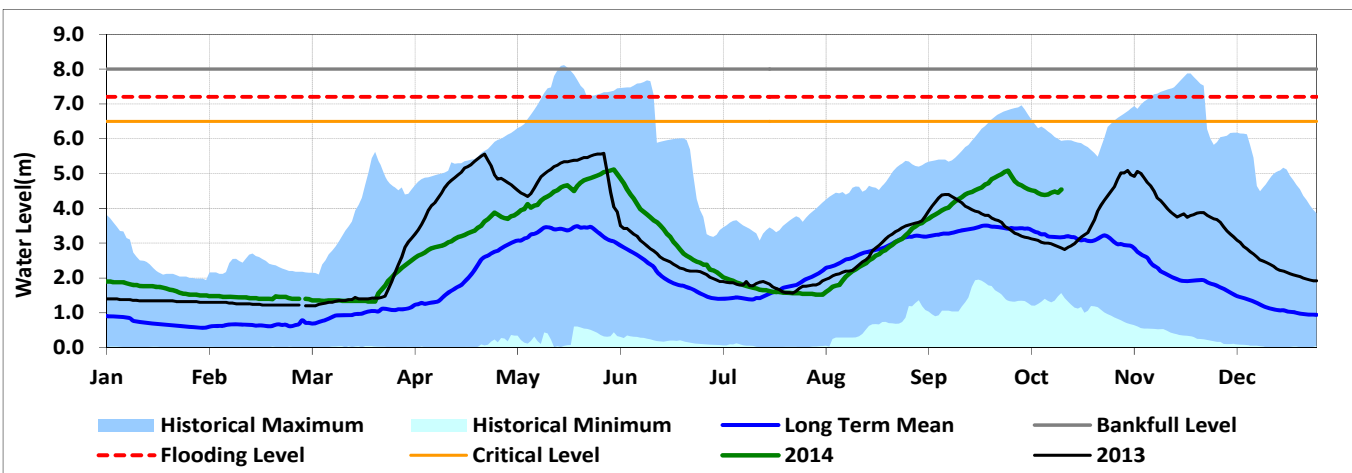
Belet Weyne



Date	Current river level	Relative position of current river level from:			
		Previous day	Low Flood Risk	Moderate Flood Risk	High Flood Risk
15-Oct-13	6.10	0.10	-0.20	0.40	1.20
14-Oct-13	6.00	0.15	-0.10	0.50	1.30
13-Oct-13	5.85	0.35	0.05	0.65	1.45

Observed river levels at Belet Weyne increased sharply in the last few days. Today's river level is 6.10m which is 0.40m below the critical level of flooding and 1.20m below the high risk flood level.

Bulo Burti



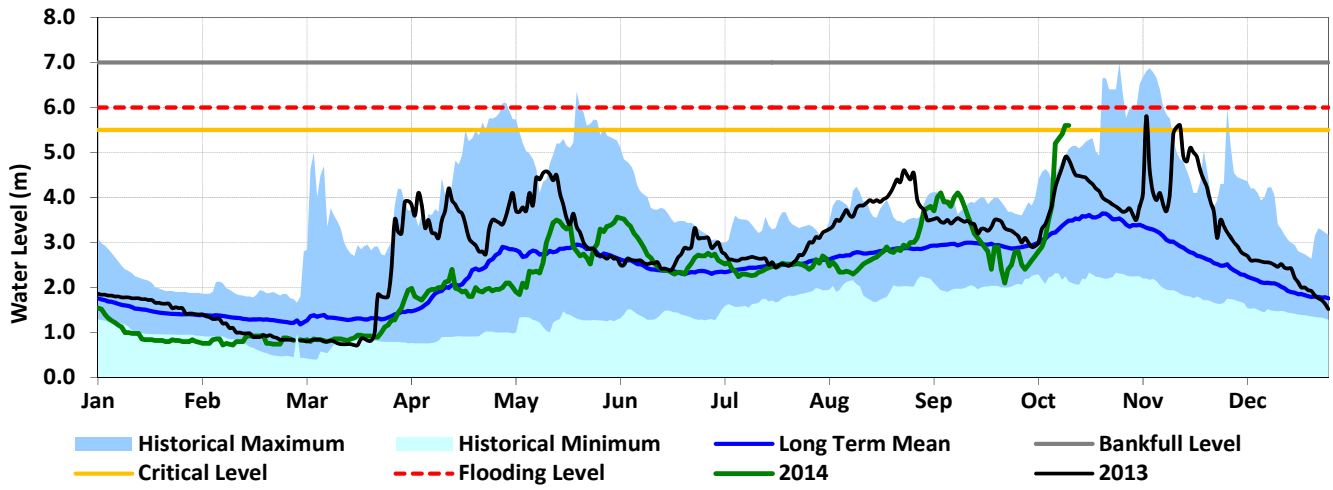
Date	Current river level	Relative position of current river level from:			
		Previous day	Low Flood Risk	Moderate Flood Risk	High Flood Risk
15-Oct-13	4.54	0.09	1.46	1.96	2.66
14-Oct-13	4.45	-0.03	1.55	2.05	2.75
13-Oct-13	4.48	0.03	1.52	2.02	2.72

Observed river levels at Bulo Burti increased towards the end the week. Today's river level is 4.54m which is 2.66m below the high risk flood level.

Forecast for coming week for Shabelle

Given the rainfall forecast for coming week and the current observed river levels, there is moderate risk of flooding during the forecast period especially in the lower reaches of the river.

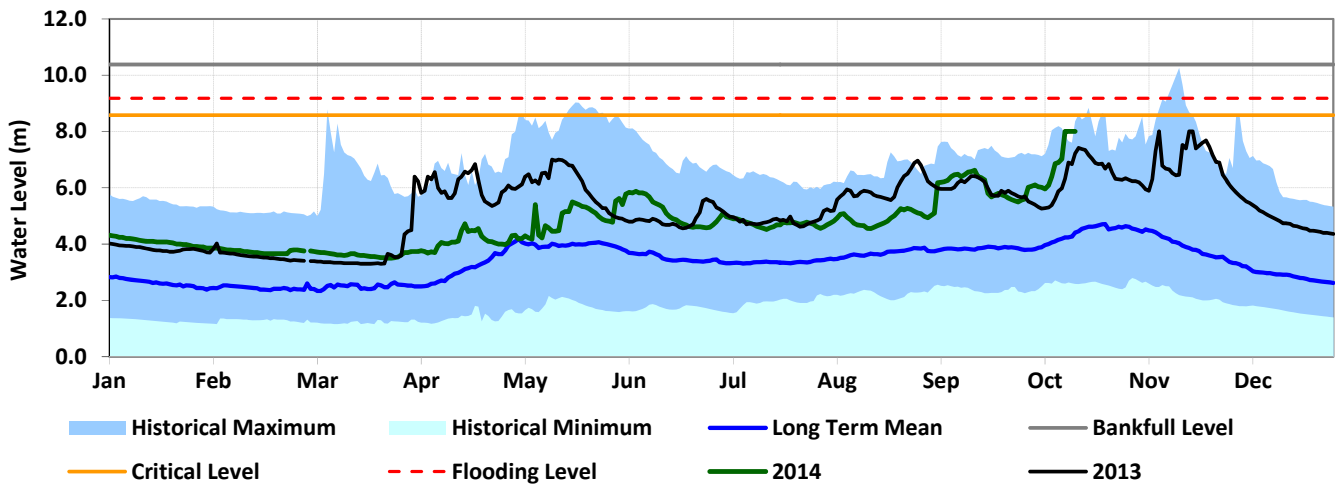
Luuq



Date	Current river levels		Relative position of current river levels from:		
	Levels	Previous day	Low Flood Risk	Moderate Flood Risk	High Flood Risk
15-Oct-13	5.60	0.00	-0.40	-0.10	0.40
14-Oct-13	5.60	-0.20	-0.40	-0.10	0.40
13-Oct-13	5.40	-0.10	-0.20	0.10	0.60

Observed river levels at Luuq increased sharply over the last week, and surpassed the critical level of flooding. Today's river level is 5.60m which is 0.40m below the high risk flood level.

Bardheere



Date	Current river levels		Relative position of current river levels from:		
	Levels	Previous day	Low Flood Risk	Moderate Flood Risk	High Flood Risk
15-Oct-13	8.00	0.00	0.18	0.58	1.18
14-Oct-13	8.00	0.00	0.18	0.58	1.18
13-Oct-13	8.00	0.00	0.18	0.58	1.18

Observed river levels at Bardheere increased sharply over the last week. Today's river level is 8.00m which is 1.18m below the high risk flood level.

Forecast for coming week for Juba

Given the rainfall forecast for coming week and the current observed river levels, there is moderate risk of flooding during the forecast period especially in the lower reaches of the river.