

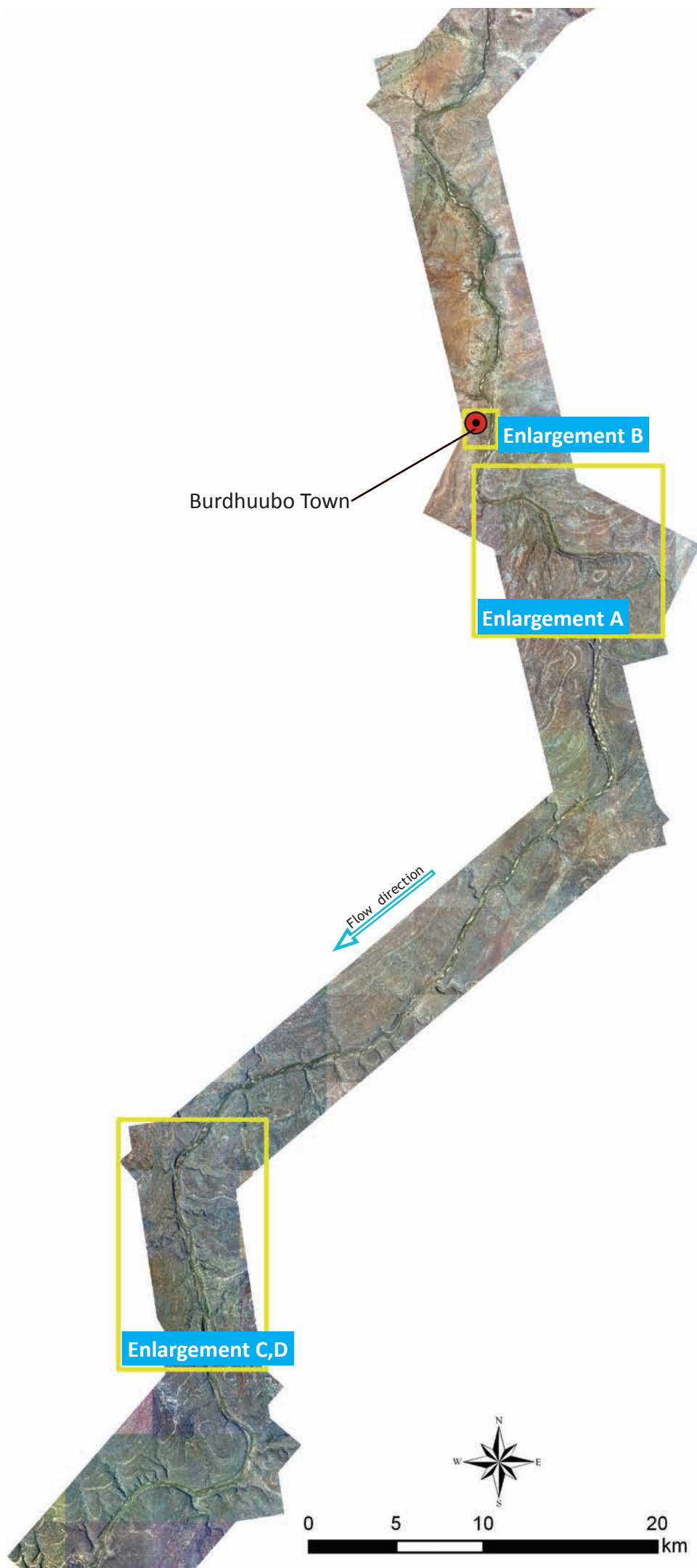
Buurdhubo

Buurdhubo is a town in Gedo Region, located between the cities of Bardheere and Luuq. Garbahaarey, Gedo region's capital is just 60 km away from Buurdhubo.

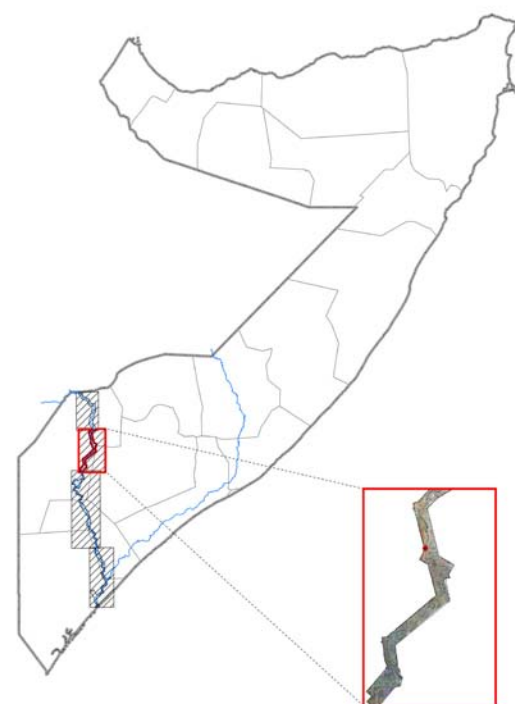
Since the early 1990s, Buurdhubo has seen new business activities and population growth as is the case in most Somali cities.

Buurdhubo waa magaalo ka tirsan Gobolka Gedo oo ku taal meelo u dhaxaysa magaalooyinka Bardheere iyo Luuq. Garbahaarey, caasimadda Gobolka Gedo waxay Buurdhubo u jirta 60 km oo qura.

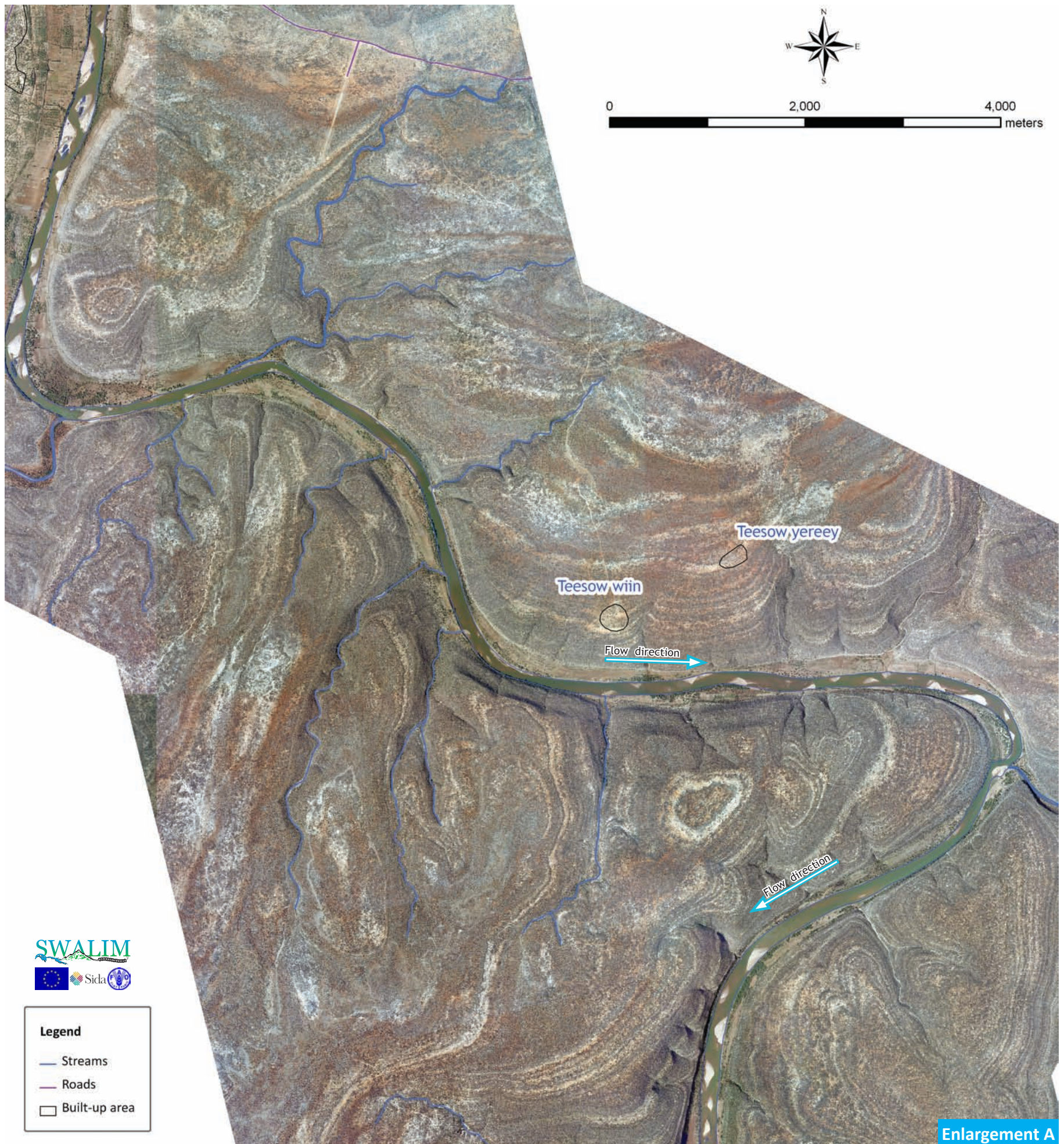
Laga soo bilaabo horraantii 1990-aadkii, Buurdhubo waxaa ka jirey hawlo cusub oo ganacsi iyo dadweyne kordhayey sida magaalooyinka Soomaaliya intooda badan.



Page	Description	Enlargement
159	River meanders	A
160	Buurdhubo town	B
161	Elevation, land use and land cover	C, D
162	Morphology	n/a
164	Roads and settlements	n/a
165	Climate and water resources	n/a



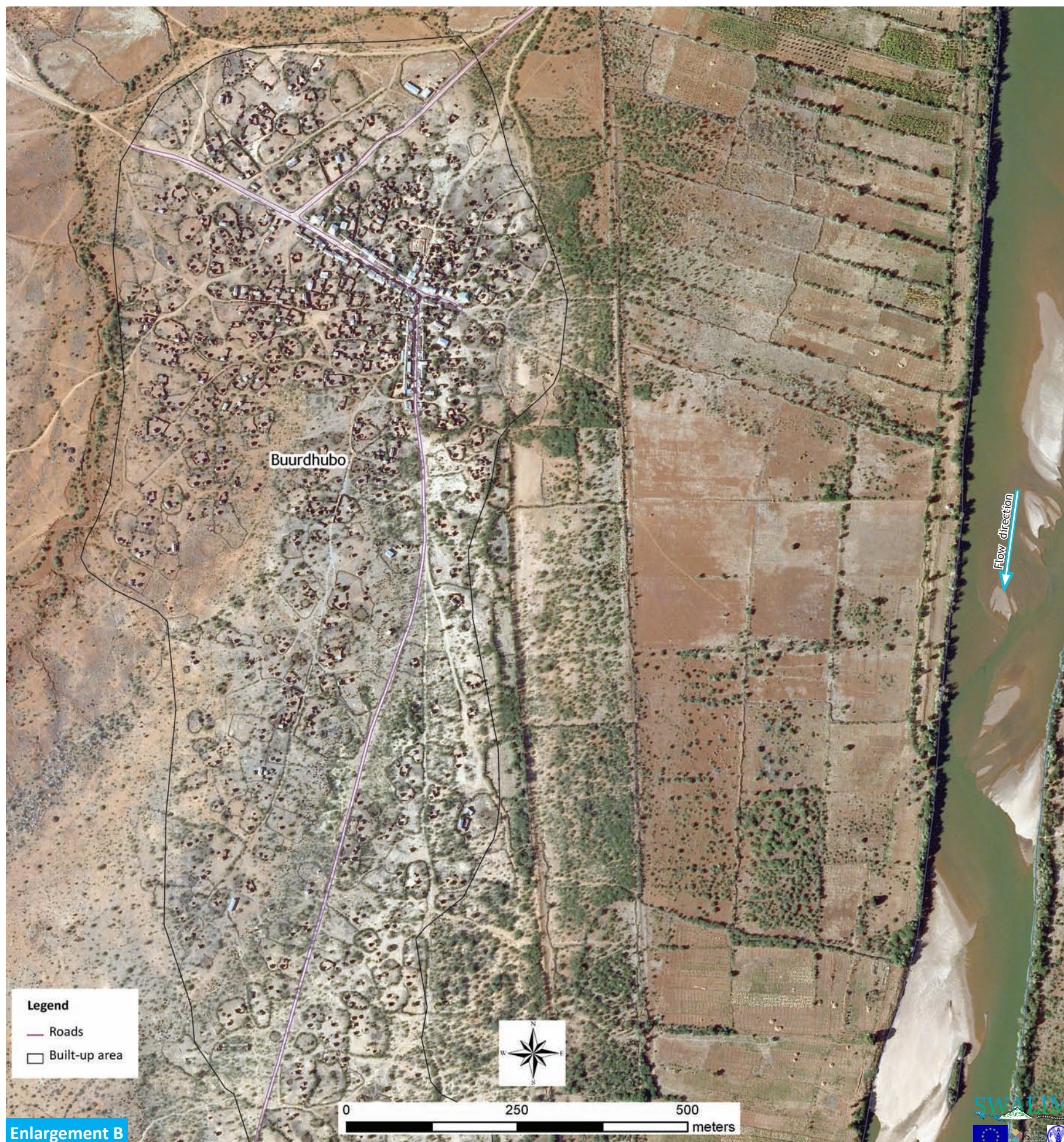
River meanders Leexleexyada wabiga



In this section the river valley gets very narrow and crop fields are very rare. The terrain is rugged and covered by shrubs. The river is seen meandering through the rugged terrain.

Waaxdaan gudaheeda, doxa wabigu aad buu ciriiri u noqdaa hadana beeraha dalagyadu waa ku naadir. Geyigu waa buuraley oo hu'ga dhulka yahay geedgaab. Waxaan la arkayaa in wabigu ku leexleexo bartamaha dhul buuraley ah.

Buurdhubo town Magaalada Buurdhubo



The inhabitants of the town make a living from their farms along the banks of the river and also rear animals such as camels, cattle, goats and sheep. The houses are not very densely built and crop fields occur to the east next to the river. The western part of the town is covered by natural vegetation, mainly shrubs.

Dadka dagan magaalada waxay ka xoogsadaan beerahooda oo dherersan wabiga labadiisa dagal, waxaa kale oo ay dhaqdaan xoolo sida geel, lo', riyo, iyo idoh. Guryuhu aad iskuguma cumur aha, beeraha dalagyaduna waxay ku yaaliin dhanka bariga ee xiga wabiga. Qaybta galbeed ee magaalada waxaa ku yaal dhir dabiici ah, badanaa geedgaab.

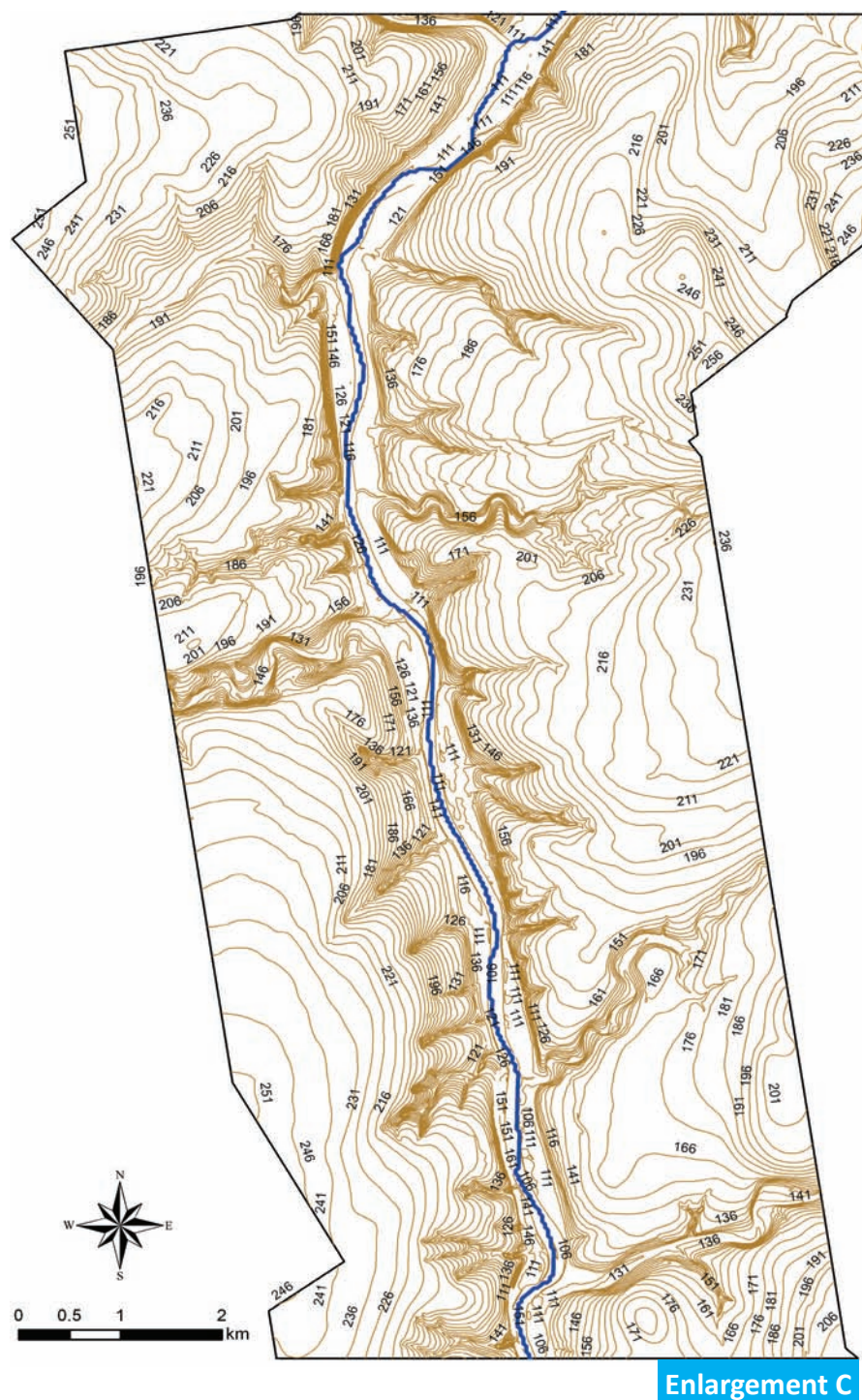
Elevation, land use and land cover Joogga, isticmaalka dhulka iyo hu'ga dhulka

Elevation

The terrain in this section of the river is rugged and confines the river into a narrow flood plain. The land adjacent to the river channel is steep with numerous secondary channels draining into the main river course. Due to the features of the terrain, the river takes a meandering form.

Joogga

Dhulka waaxdaan wabiga waa buuraley waxayna wabiga ku xadeysaa dhul bannaan carro daadkeentay ciriiri ah. Dhulka dariska la ah dooxa wabiga waa babac hoobad ah oo leh laagag yaryar oo badan oo ku darmanaya doox weynaha wabiga. Ayadoo ay ugu wacan tahay baxaalliga dhulka wabigu wuxuu yeeshaa qaab leexleexda.

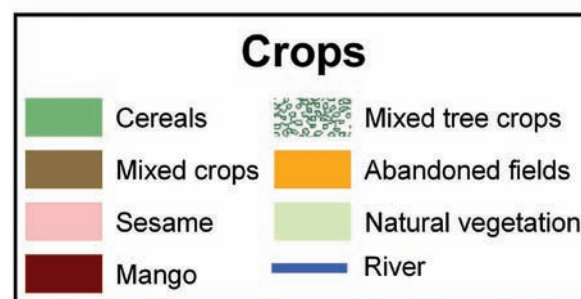
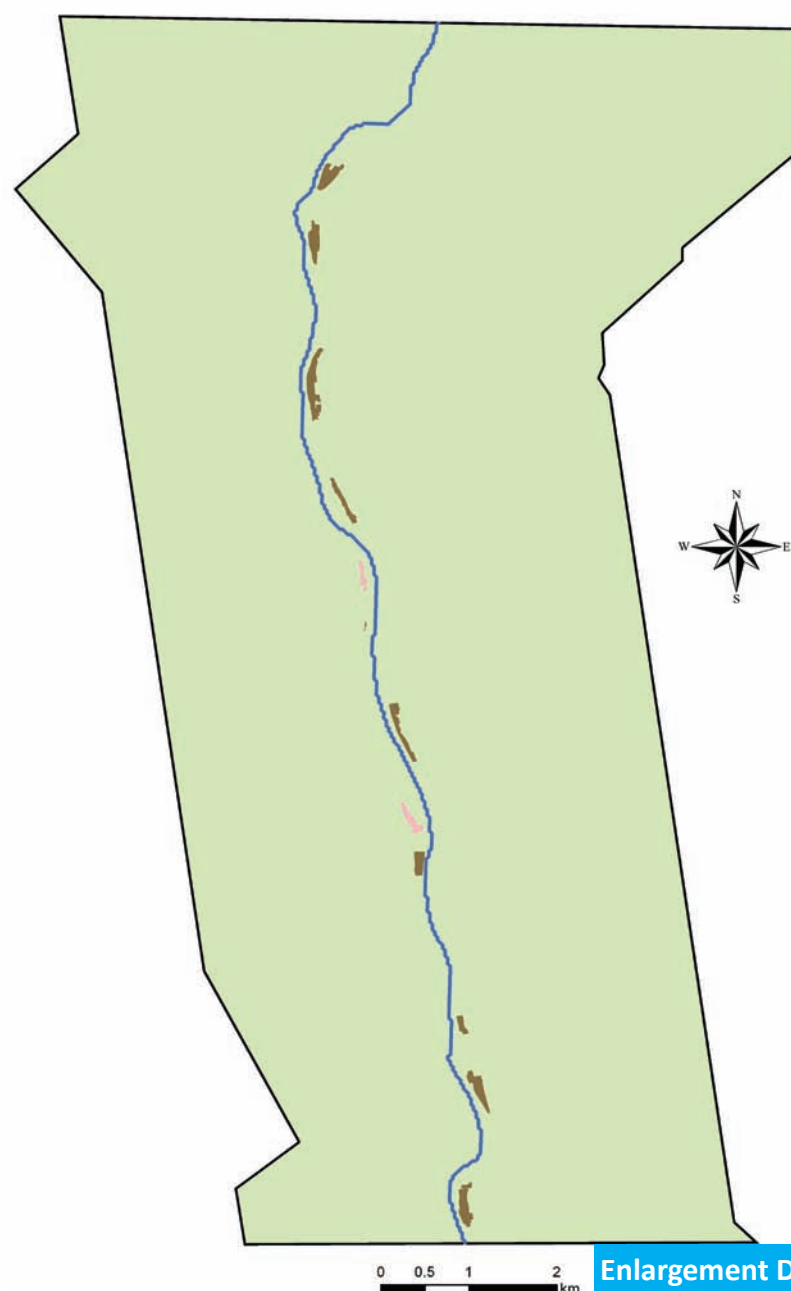


Land use and land cover

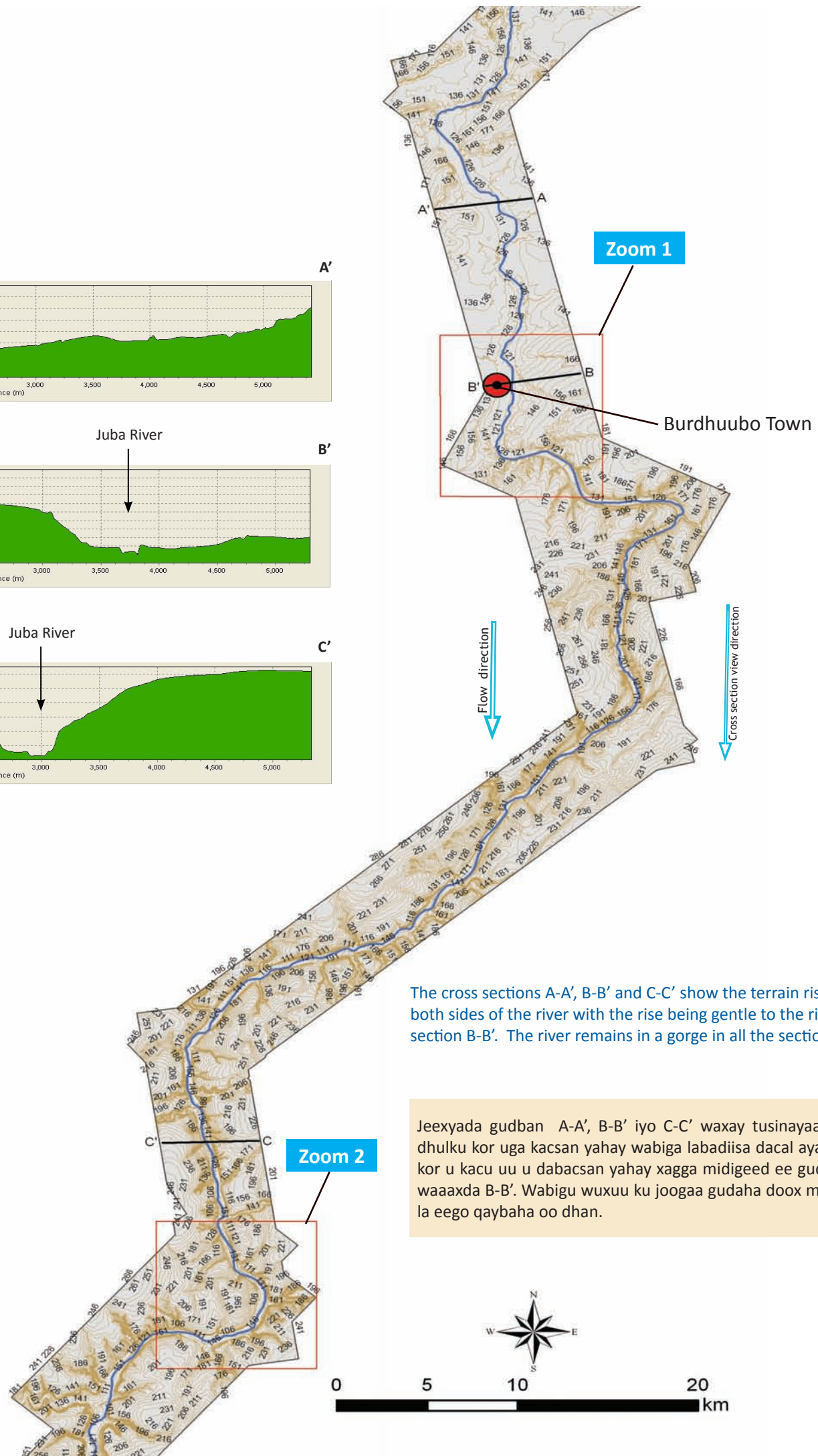
Farming activities in this section of the river are limited by the narrow flood plains. Crop fields are few and are scattered here and there but remain along the river. Rugged terrain on both sides of the river limits expansion of crop fields.

Isticmaalka dhulka iyo hu'ga dhulka

Hawlaha waxbeerasha waaxdaan wabiga waxay ku kooban yihiin bannaanka carro daadkeentayda ciriiriga ah. Beeraha dalagyada waa xoogaa waxayna ku firirsan yihiin halka iyo xagga ee jiidda wabiga. Dhulka buuraleyda ah ee labada dhinac ka xiga wabiga waxay xadaysaa fiditaanka beeraha dalagya.



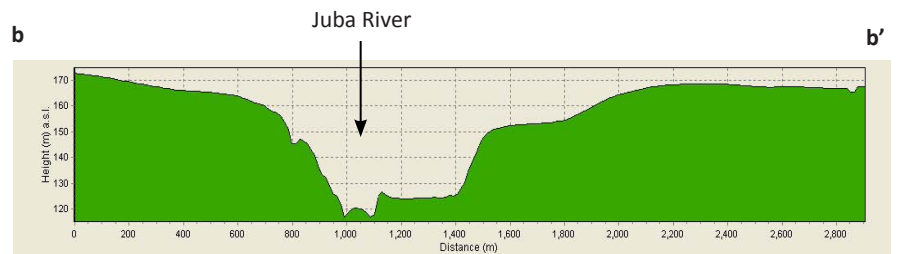
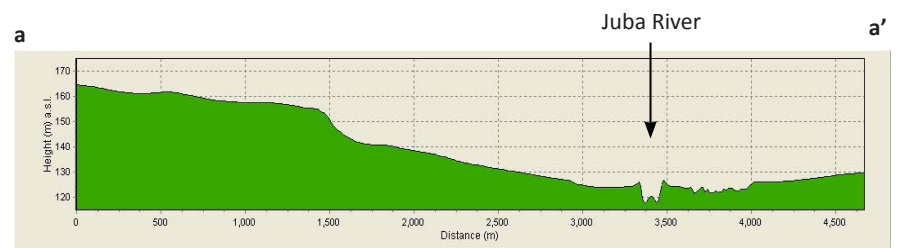
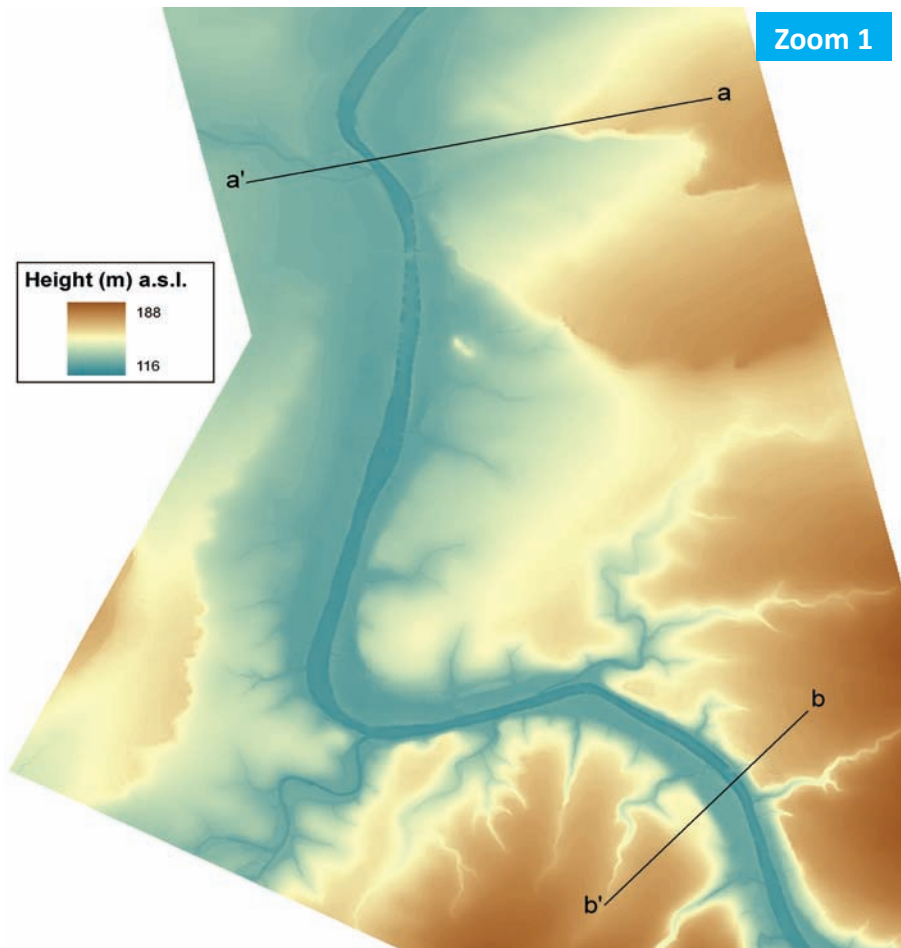
Morphology Qaab-dhismaha



The cross sections A-A', B-B' and C-C' show the terrain rises on both sides of the river with the rise being gentle to the right in section B-B'. The river remains in a gorge in all the sections.

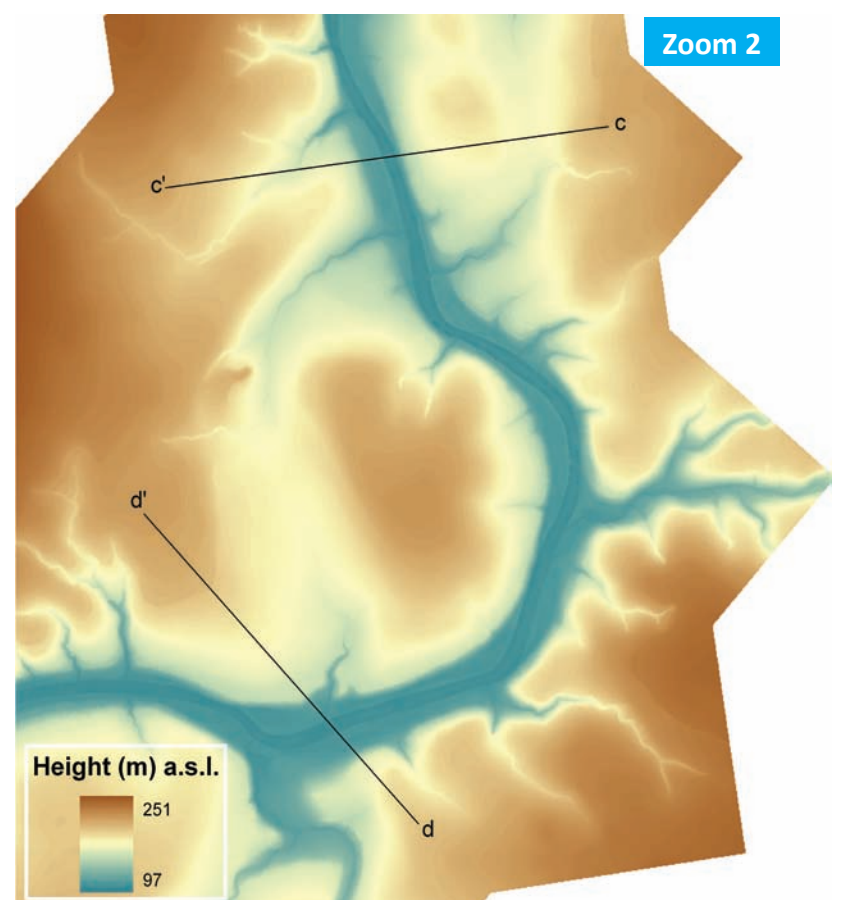
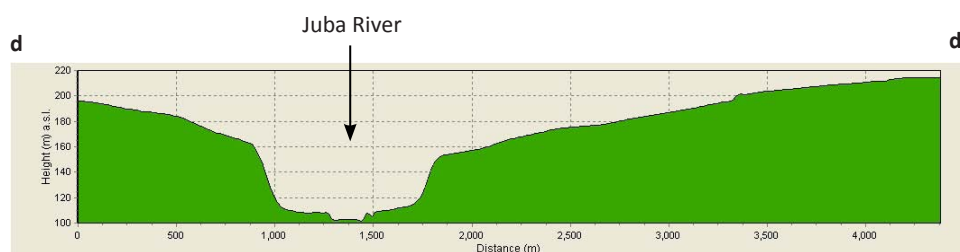
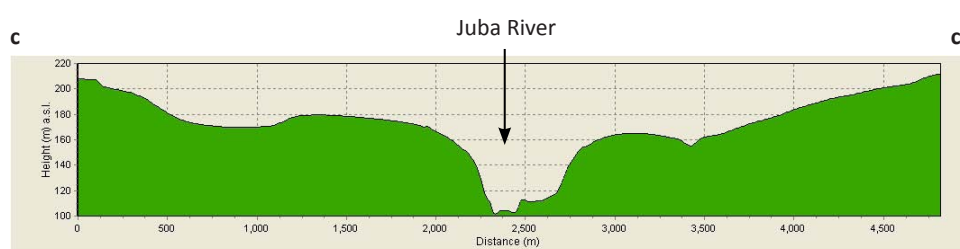
Jeexyada gudban A-A', B-B' iyo C-C' waxay tusinayaan in dhulku kor uga kacsan yahay wabiga labadiisa dactal ayadoo kor u kacuu u dabacsan yahay xagga midigeed ee gudaha waaaxda B-B'. Wabigu wuxuu ku joogaa gudaha doox marka la eego qaybaha oo dhan.

Morphology Qaab-dhismaha



The DTM and cross sections show a confined river channel with a narrow flood plain and steep slopes on either side of the river. On the DTM, numerous secondary channels drain to the land adjacent to the river channel.

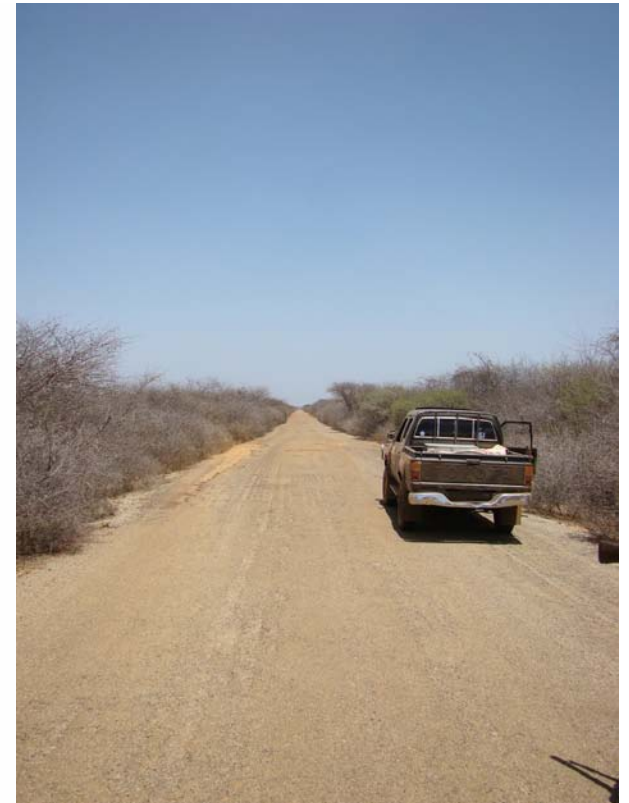
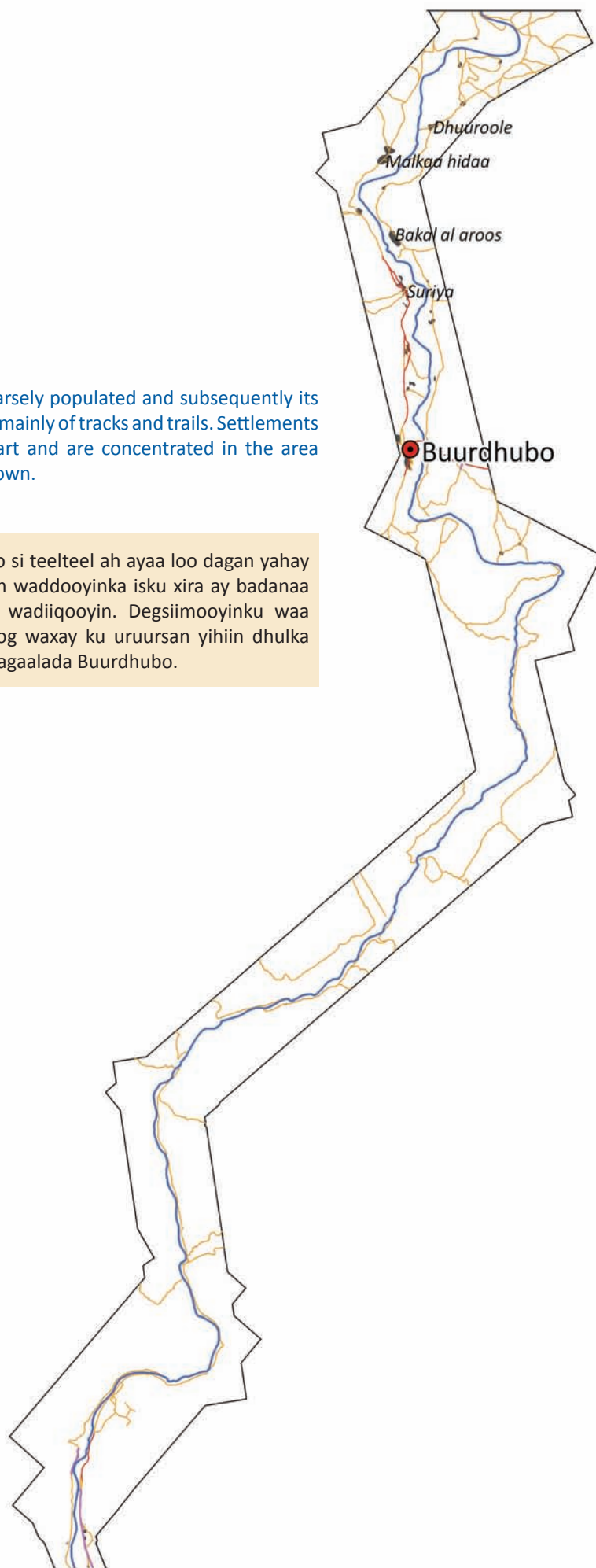
DTM-ka iyo jeexyada gudban waxay tusinayaan dooxa wabiga oo ku xadidan bannaan carro daadkeenay ciriiri ah iyo bacbacyo hoobad (dululub) ah oo wabiga ka xiga labada dhinac. Korka DTM-ka, waxaa ka muuqda in laagag yaryar oo farabadan oo ku qulqulaya dhulka dacalka ku haya dooxa wabiga.



Roads and settlements Waddooyinka iyo degmooyinka

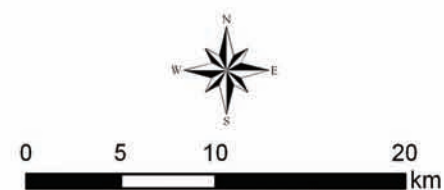
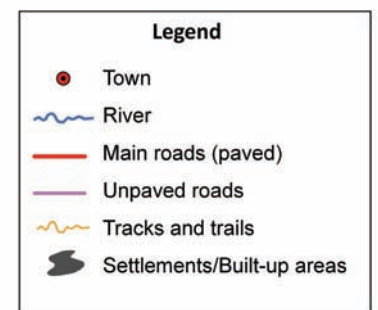
Buurdhubo area is sparsely populated and subsequently its road network consists mainly of tracks and trails. Settlements are few and wide apart and are concentrated in the area north of Buurdhubo town.

Degaanka Buurdhubo si teelteel ah ayaa loo dagan yahay hadana waxaa xiga in waddooyinka isku xira ay badanaa yihiin jid cadde iyo wadiiqooyin. Degsiimooyinku waa xoogaa aad u kala fog waxay ku uruursan yihiin dhulka waqooyiga ka xiga magaalada Buurdhubo.



Some sections of the road network have tarmac. However, the condition of the tarmacked roads is not good

Qaar ka mid ah waaxyaha jidadka isku xirta waxay leeyihiin laami. Si kastaba ahaate, xaaladda waddooyinka laamiga ma fiicna



Climate and water resources Cimilad iyo khayraadka biyaha

The rainfall pattern in Buurdhubo follows the two rainy seasons, *Gu* and *Dayr*. *Gu* rains start in March, and last up to May, while the *Dayr* season lasts for two months, October and November. The other months receive very light rains. The average temperature is in the range of 27 - 32 °C, but the maximum daily temperatures can go as high as 40 °C in February and March. Evapotranspiration is also quite high in the area.

Hannaanka roobab di'ista Buurdhubo waxay la socdaan xaaladda labada xilli roobaad, Gu iyo Dayr. Roobabka guga waxay bilowdaan dhammaad Maarso waxayna dhammaadaan bisha Maajo, halka xilliga Dayrta ay socdaan laba bilood, Oktoobar iyo Nofeembar. Bilaha kale waxay heshaa roobab yaryar. Celceliska kulbeegga wuxuu u dhexeeyaa 27 - 32 °C, balse kulbeeggu wuxuu gaari karaa heer sare sida 40 °C gudaha bilaha Febaraayo iyo Maarso. Sidoo kale Uumibaxa dagaanka aad ayuu u sarreeyaa

Long term average monthly climatic values at Buurdhubo

Climatic variable	Jan	Feb	Mar	Apr	May	Jun	Jul	Aug	Sep	Oct	Nov	Dec
Rainfall (mm)	2.0	3.5	22.6	99.6	61.5	6.0	6.3	3.2	5.8	65.0	82.0	15.5
Mean temperature (°C)	30.6	31.4	32.4	31.1	29.7	28.6	27.2	27.5	28.9	29.8	29.6	29.8
Minimum temperature (°C)	22.6	23.3	24.1	23.9	23.7	22.5	21.7	21.7	22.5	22.9	22.7	22.3
Maximum temperature (°C)	38.4	39.4	40.9	38.2	35.8	34.5	33.0	33.4	35.4	36.6	36.7	37.2
Potential evapotranspiration (mm)	229	197	218	168	182	187	187	189	202	176	171	184
Wind speed (km/hr)	11.5	7.9	7.2	5.4	10.1	14.4	14.7	13.7	12.0	8.7	8.1	7.8

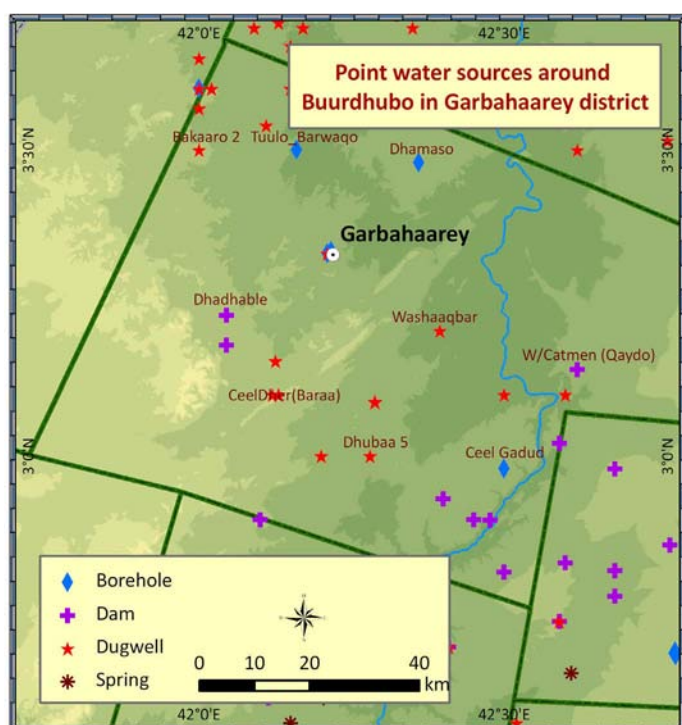
The strategic point water sources found in Buurdhubo and the wider Garbahaarey district comprise of boreholes, shallow wells and dams. The depths of boreholes in this area range between 85 - 100 m, with the static water level at about 50 m. Shallow wells; which form the majority of the water sources range between 5 - 15 m in depth. The majority of the sources have moderately saline water with EC values ranging between 150 - 700 $\mu\text{S}/\text{cm}$, but extreme cases of EC values in excess of 5 000 $\mu\text{S}/\text{cm}$ also exist.

Meelaha biyaha muhiimka ah ee laga helo Buurdhubo iyo guud ahaan degmada Garbahaarey waxay isugu jiraan ceel riig, ceelal gaagaaban iyo waro. Qotodheerida ceel riigyada degaanka waxay u dhaxaysaa 85 - 100 m, heerka xasillan ee biyahuna qiyaas ahaan waa 50 m. Ceelasha gaagaaban intooda badan biyahu waxay jiraan qotodherer ahaan in u dhaxaysa 5 - 15 m. Qaalibka biyaha laga helo degaankan waa biyo dhanaan dhedhexaad ah oo qiimaha korton gudbinta (EC) uu u dhexeeyo 150 - 700 $\mu\text{S}/\text{cm}$, hase ahaatee waxaa jira marar heerka qiimaha EC - du uu xad-dhaaf yahay oo ka koreeyo 5 000 $\mu\text{S}/\text{cm}$.



Water trough in Gedo

Biyaha Gedo dhex-mara



Shallow well in Buurdhubo

Ceel gaaban gudaha Buurdhubo