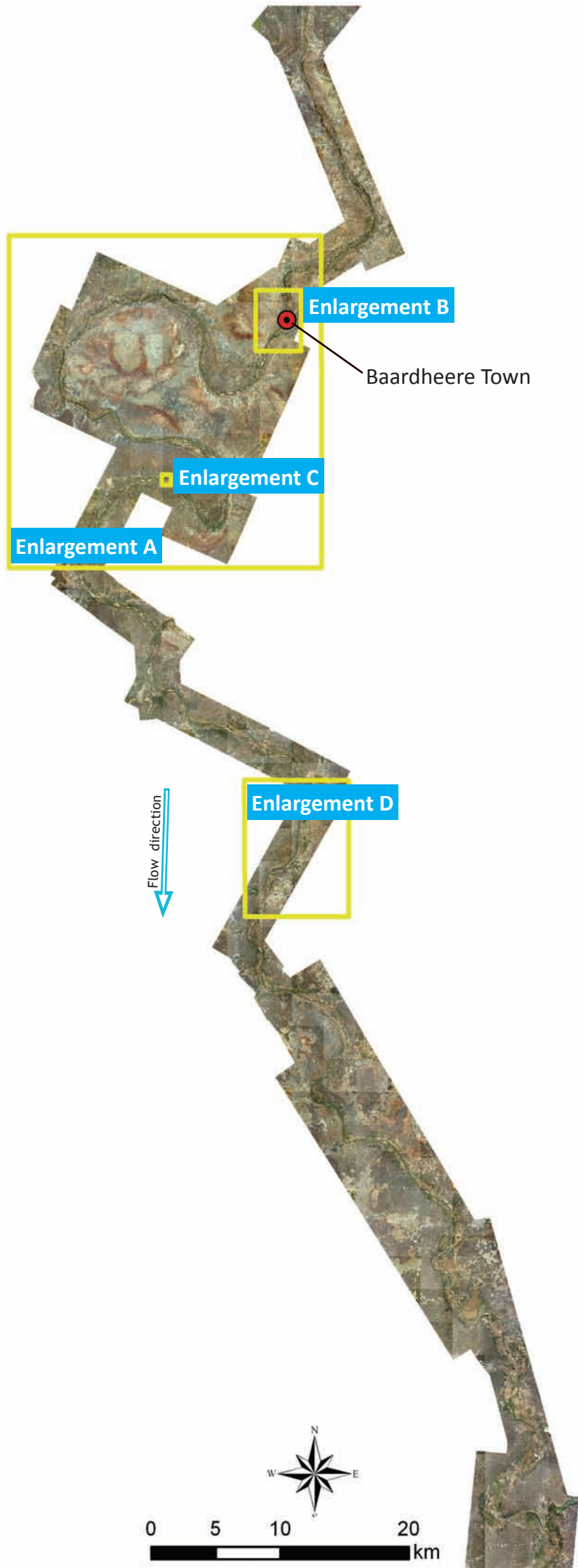


Baardheere - Bu'aale

Baardheere sub - section (Waax-hoosaadka Baardheere)



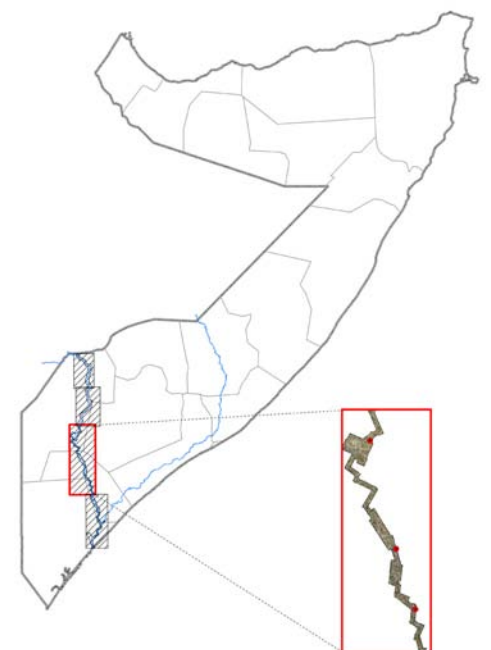
Baardheere is an important agricultural city in Gedo Region. It is the second most populous town in the Juba Valley, with Kismaayo being the largest and most densely populated city in the region. The name Baardheere is a compound of two words: Baar meaning “palm tree”, and dheere meaning “tall”, a reference to the ubiquitous palm trees in the area. The city is also reputed as a hub of Islamic scholarship and agricultural production.

Baardheere is characterized by warm weather and high humidity. The climate is ideally suited for year-round crop production. Large numbers of Baardheere’s residents make their living working on the many small and large farms on the span of the Juba River in Baardheere District.

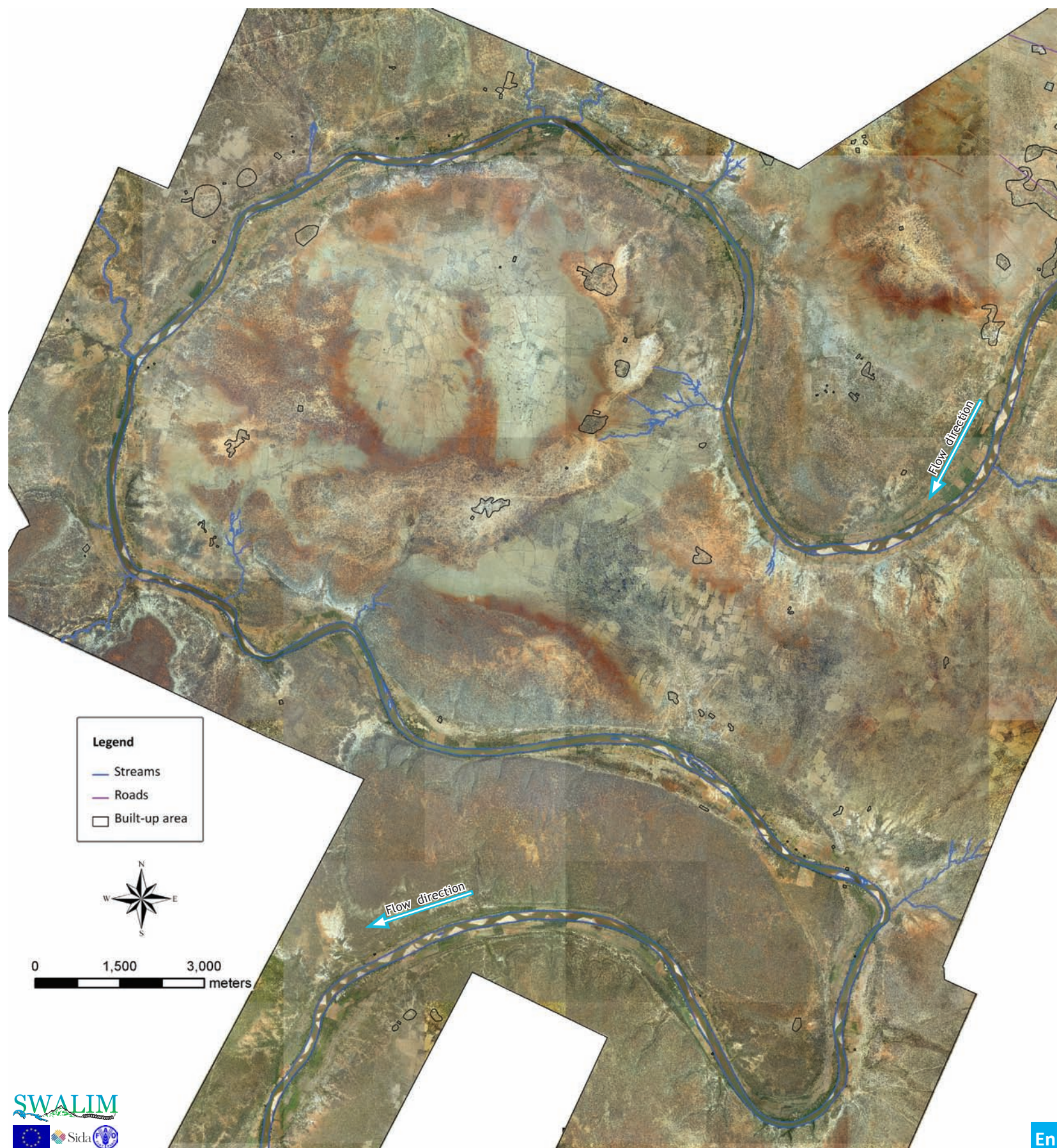
Baardheere waa magaalo beereed oo ka tirsan Gobolka Gedo. Waa magaalada labaad ee ugu dad badan Dooxada Juba, Kimaayo ayaa ah midda gobolkaan ugu dad badan. Magaca Baardheere wuxuu ka kooban yahay laba eray: ‘Baar’ oo micnaheedu yahay geedka baarka, iyo ‘dheere’ oo micnaheedu yahay oo dherer ku sifaynaysa geed baar oo ku badan degaanka.

Magaaladu waxay taariikh u leedahay in ay ahayd meel Diinta Islaamka lagu barto oo jameeco ah iyo waxsoosaarka beeraha. Baardheere waxaa lagu sifeeyaa meel hawo kulul oo huur ah. Cimiladeedu waxay suurogelinaysaa in sanadka oo idil beeraha laga soo saaro. Dadweyne farabadan oo degan Baardheere waxay noloshooda kala soo baxaa beero badan oo isugu jira yaryar iyo waaweyn oo ku hareeraysan Wabiga Juba ee Degmada Baardheere.

Page	Description	Enlargement
167	River meanders	A
168	Baardheere town	B
169	Abandoned meanders	C
170	Morphology	n/a
172	Flood risk maps	n/a
174	Crop fields	D



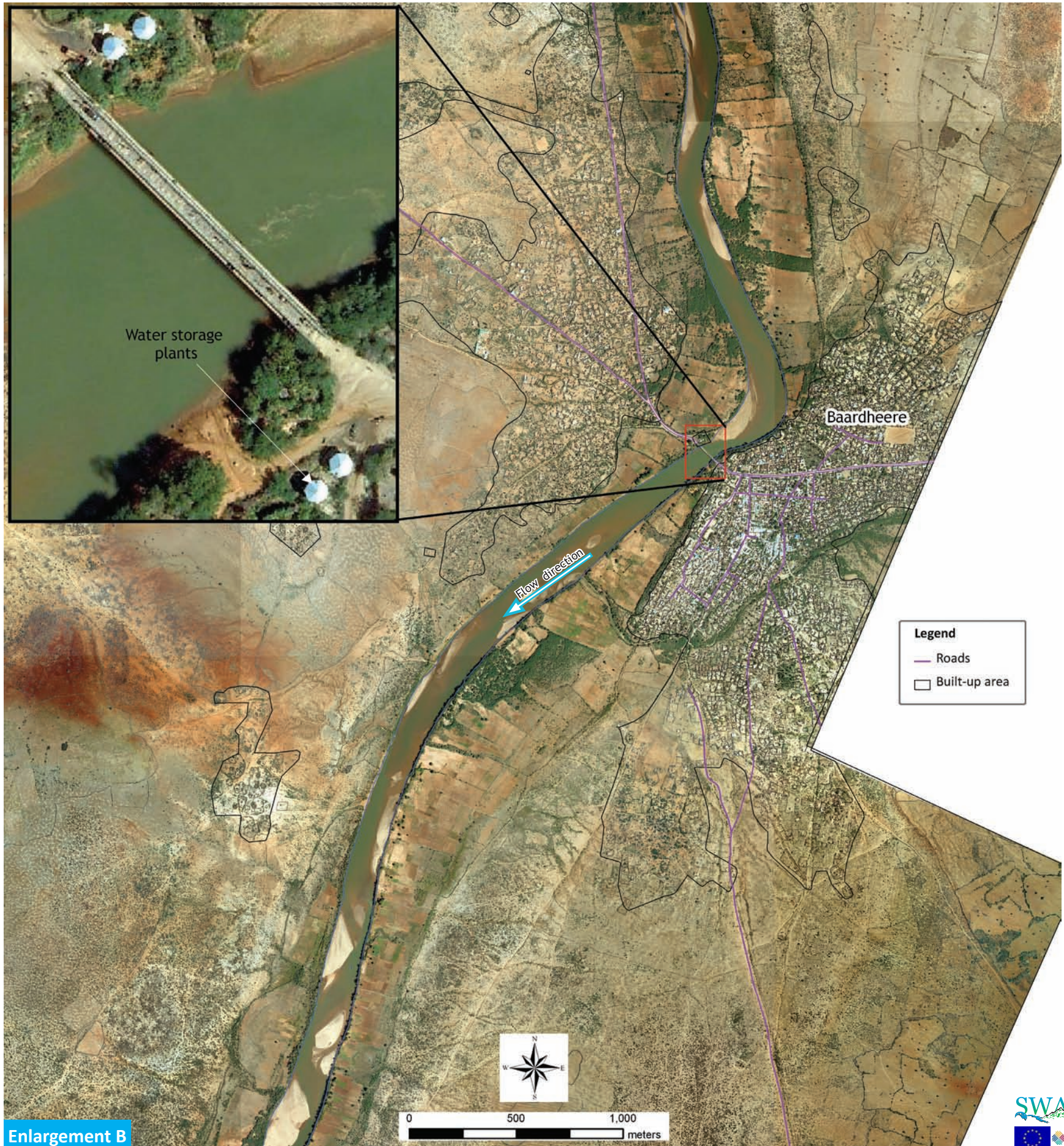
River meanders Leexleexyada wabiga



This is a river meander in a confined valley, with a very narrow floodplain and almost steep valley flanks, quite different from the one of Luuq. In this section the Juba River forms numerous series of sand bars (whitish triangular or trapezoidal features) in the river course.

Midkaani waa leexleex wabi oo doxa ku kooban, oo bannaanka ciid dhiggu dhuuban yahay, dhinacyada dooxuna ay hoobad ku dhaw yihiin, sida dhabta ahana waa ka duwan yahay midka Luuq. Waaxdatan wabigu wuxuu sameeyaa burcooyin (taagag) bacaad badan oo isku dabayaal (muuqaallada ah saddex gees cad ama afargees dhinacyo kala yar) gudaha doxa wabiga.

Baardheere town Magaalada Baardheere



Baardheere town is developed on both sides of the Juba River. The bridge in this town (inset) facilitates accessibility to the western part of the country. It is also one of the key routes used by cattle traders who sell their livestock to places as far as north-eastern Kenya. On both sides of the bridge are water storage plants (white and blue roofs) in which water is pumped from the river for domestic use.

Magaalada Baardheere waxaa ku fidsan tahay labada dhinac ee Wabiga Juba. Kaabadda magaaladaan (ballaarinta gudaha) waxay fududaysaa in loo gudbo qaybta galbeed ee dalka. Wadada halkaan waxay mid tahay wadooyinka ugu muhimad dadka lo'da ka ganacsada oo xoolahooda u iibgeeya meelo fog fog sida waqooyi bari Kenya. Labada dhinac ee kaabadda waxaa ku yaal haamo biyaha la kaydiyo (cadaan iyo buluug ded ah leh) oo laga soo bumbeyo wabiga oo markaas danayha gudaha loo isticmaalo.

Abandoned meanders Leexleexyada laga guuray



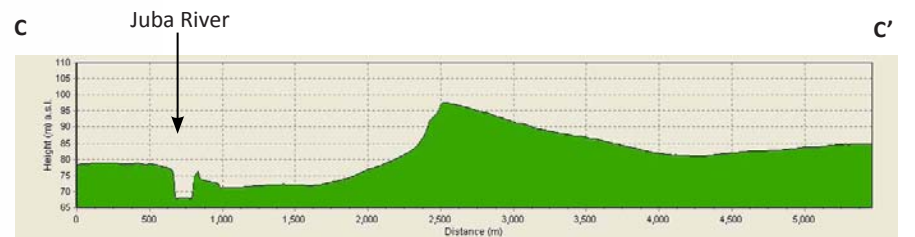
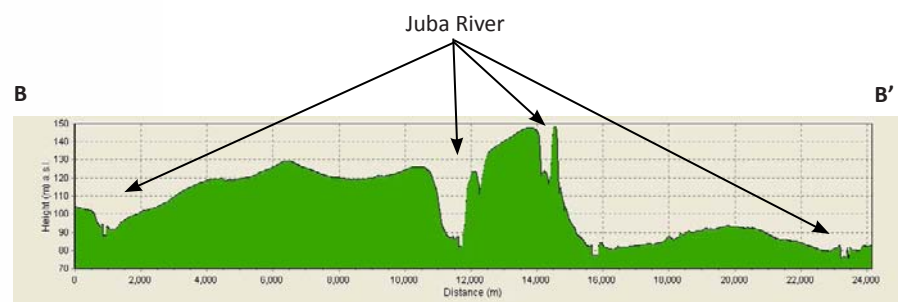
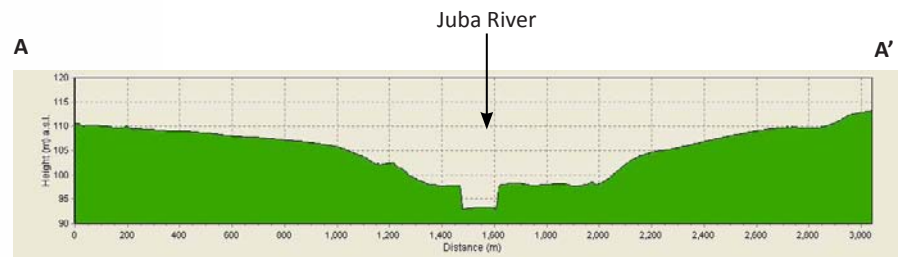
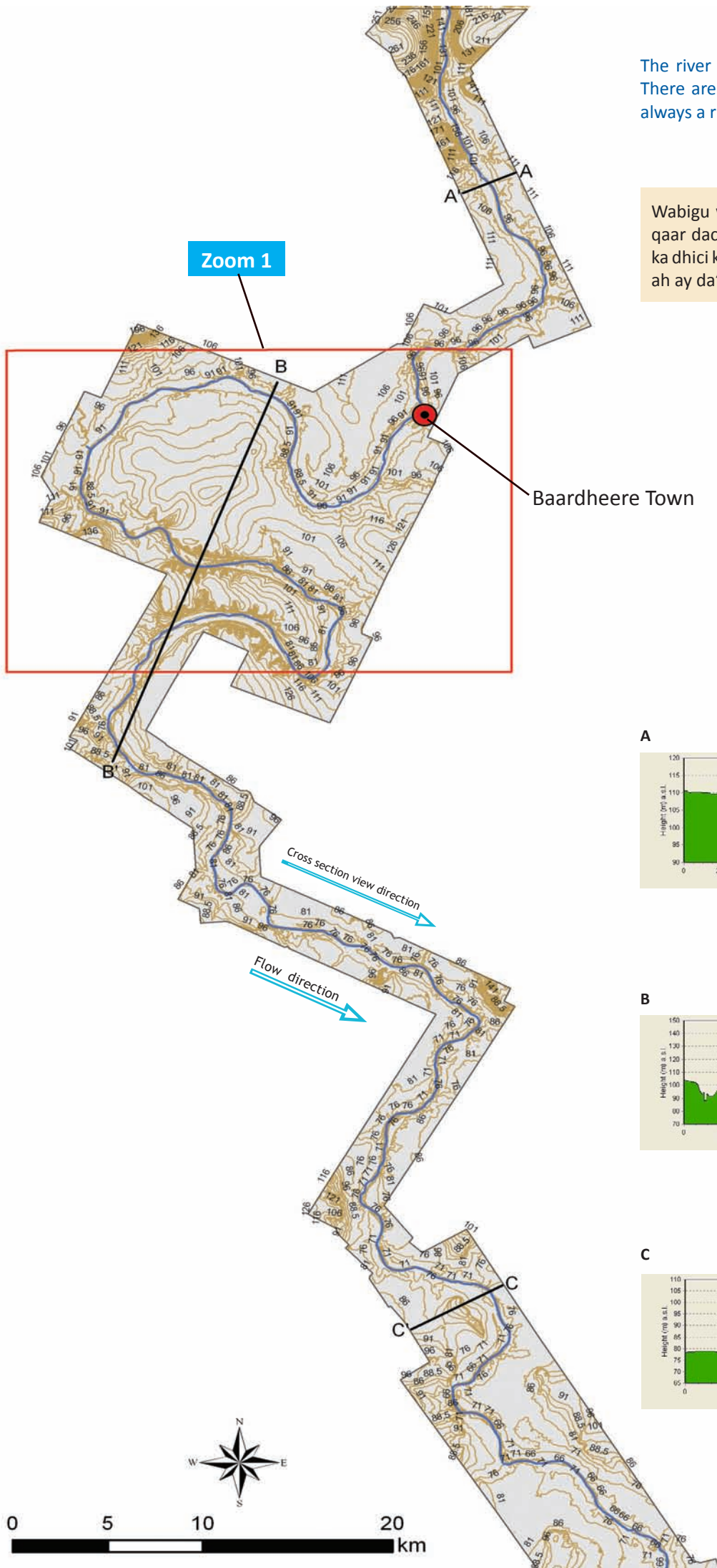
This enlargement demonstrates how the river course keeps changing. The red dotted line marks the old river course. Abandoned crop fields are also a common feature along the river.

Ballaarinta waxay muujinaysaa sida doxa wabigu uu isu baadalayo. Harada meesha raadka qoob dibga la moodo (lagu sumaday casaan) waa doox horey wabigu mari jirey. Beero laga tagay ayaa sidoo kale ah muuqaalka lagu arkayo wabiga dacladiisa.

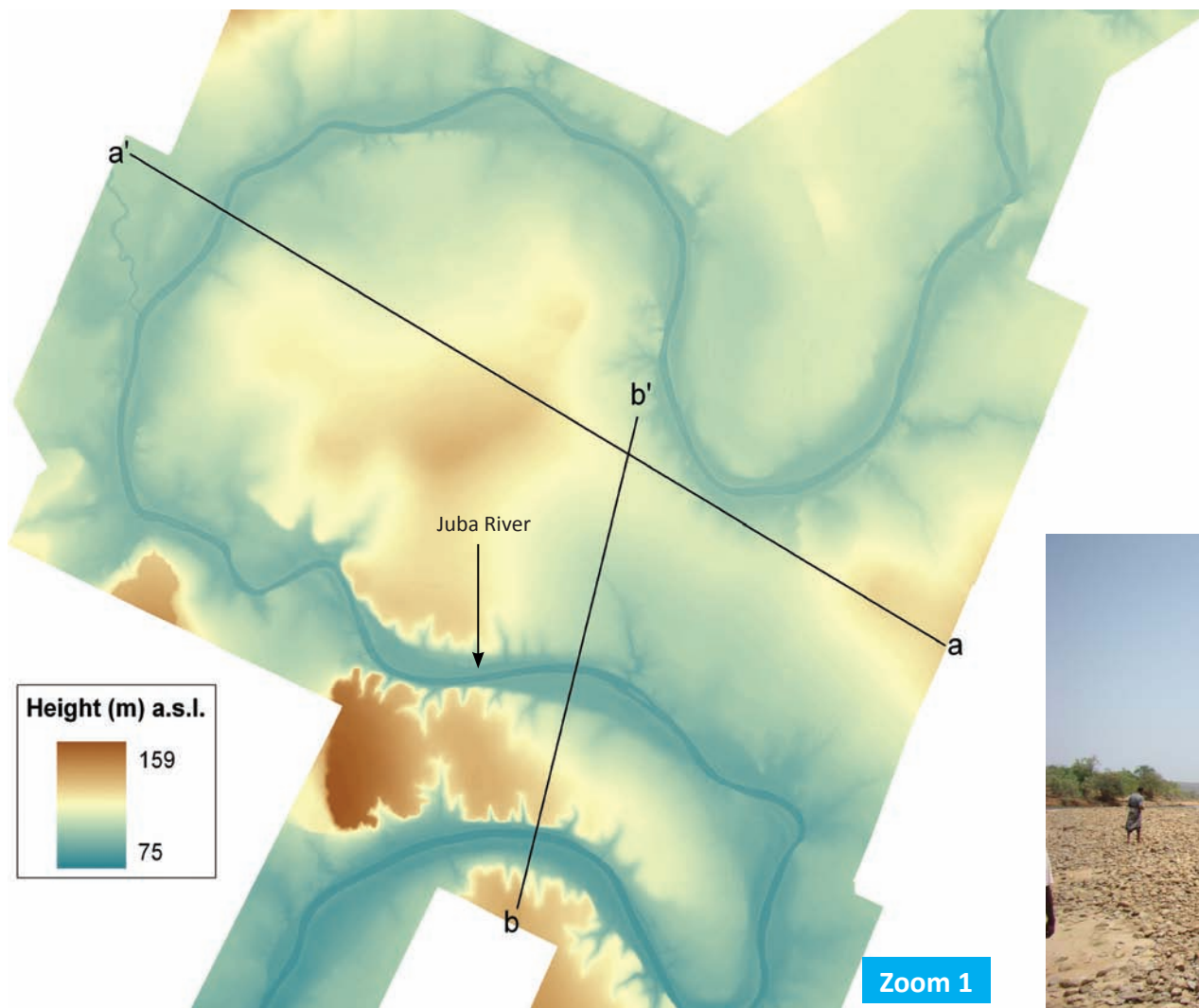
Morphology Qaab-dhismaha

The river cuts deeply in the valley and is surrounded by hills and ridges. There are some low edges within this section of the river where there is always a risk of overflow during high rainfall season.

Wabigu wuxuu hoos u qoodaa doxa iyo buuraha iyo kuraha. Waxaa jira qaar dacallo hoose ah gudaha waxaadan wabiga halkaasoo ay markasta ka dhici karto halis ah in wabigu ka kor butaaco xilliyada roobab mahiigaan ah ay da'aan.

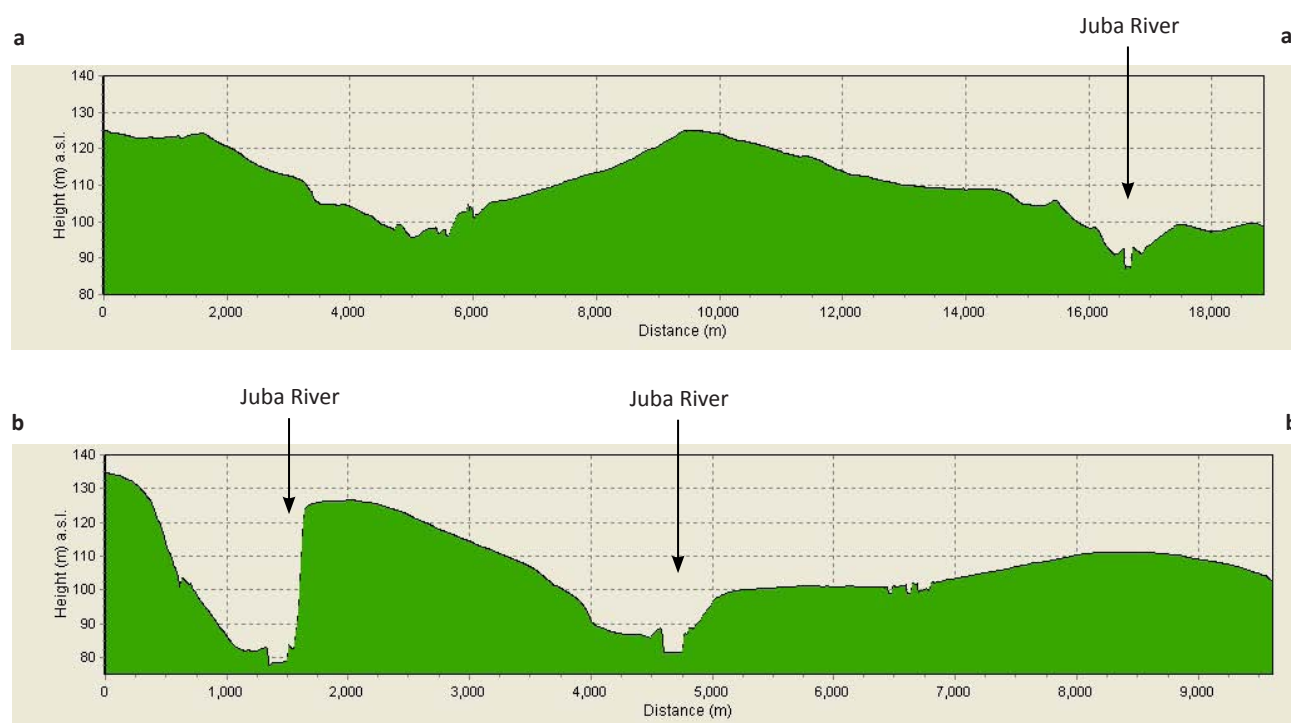


Morphology Qaab-dhismaha



The Juba River at Baardheere during extremely low flows

Webiga Juba oo biyuhu ay si aan caadi ahayn biyosocodu u hooseeyo aagga Baardheere



Flood risk map for Baardheere - 5 year return period

**Kharidadda halista fatahaadda ee Baardheere
 5 sanaba soo noqota mar**

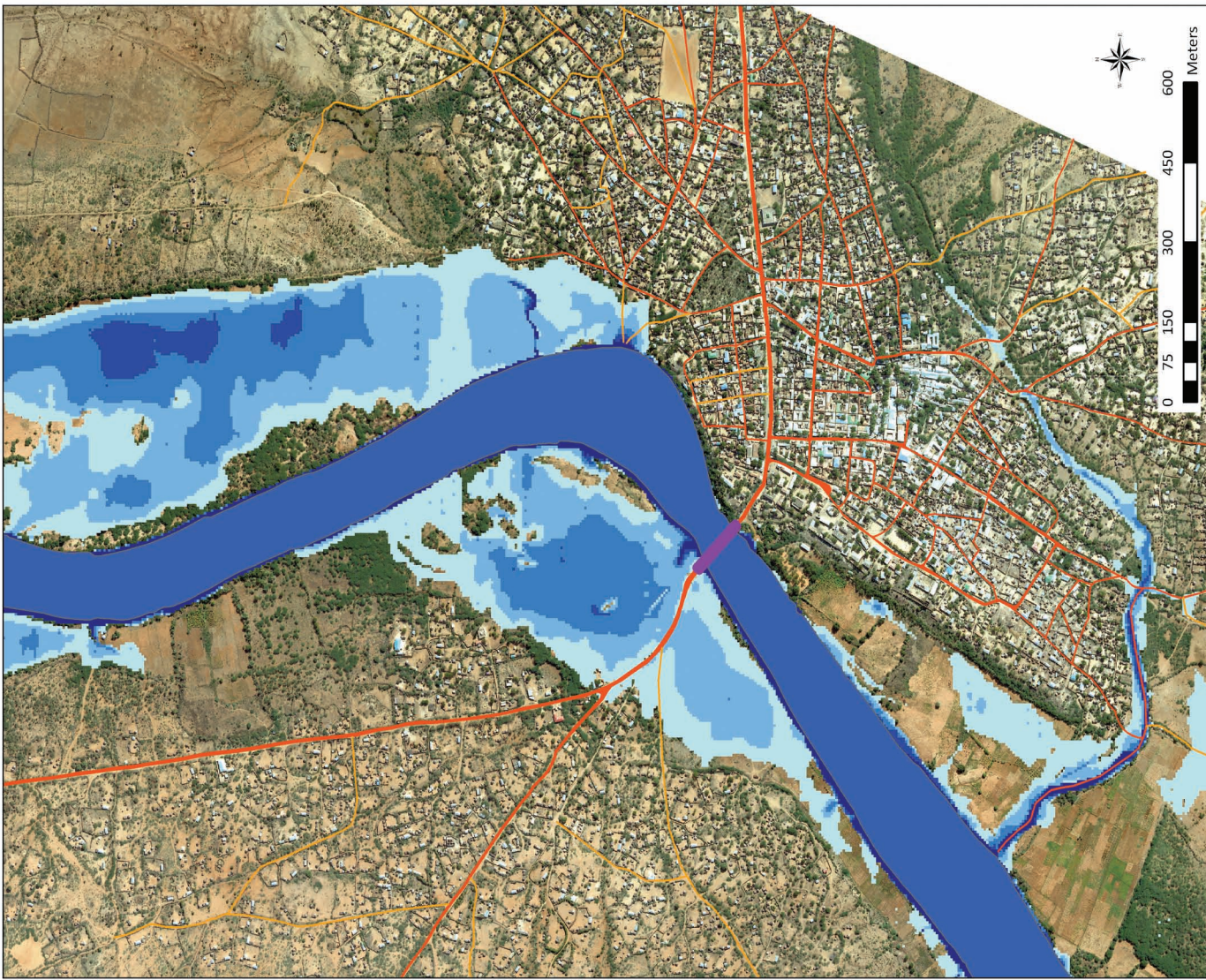


Flood water depth (m)

- 0.01 - 0.50
- 0.51 - 1.00
- Paved road
- Unpaved road
- Trails
- Bridge
- River

Flood risk map for Baardheere - 20 year return period

**Kharidadda halista fatahaadda ee Baardheere
 20 sanaba soo noqota mar**



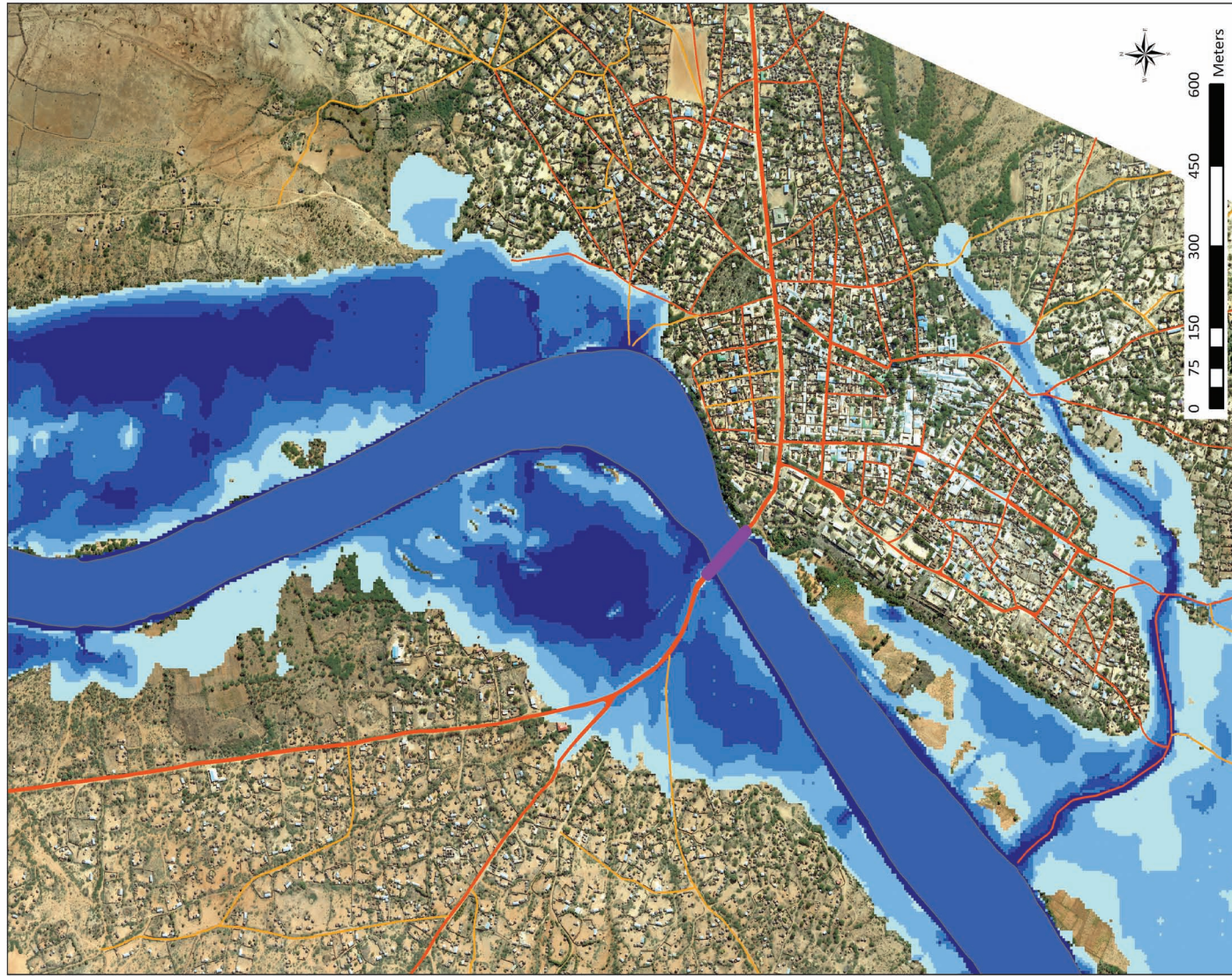
Flood water depth (m)

- 1.01 - 1.50
- 1.51 - 2.00
- >2.00
- Paved road
- Unpaved road
- Trails
- Bridge
- River

The flood risk scenarios (extent and depth) were generated using HEC-RAS hydrodynamic model. Inputs included observed flow data, river cross sections, DTM. For more information contact SWALIM (enquiries@faoswalim.org)

Flood risk map for Baardheere - 50 year return period

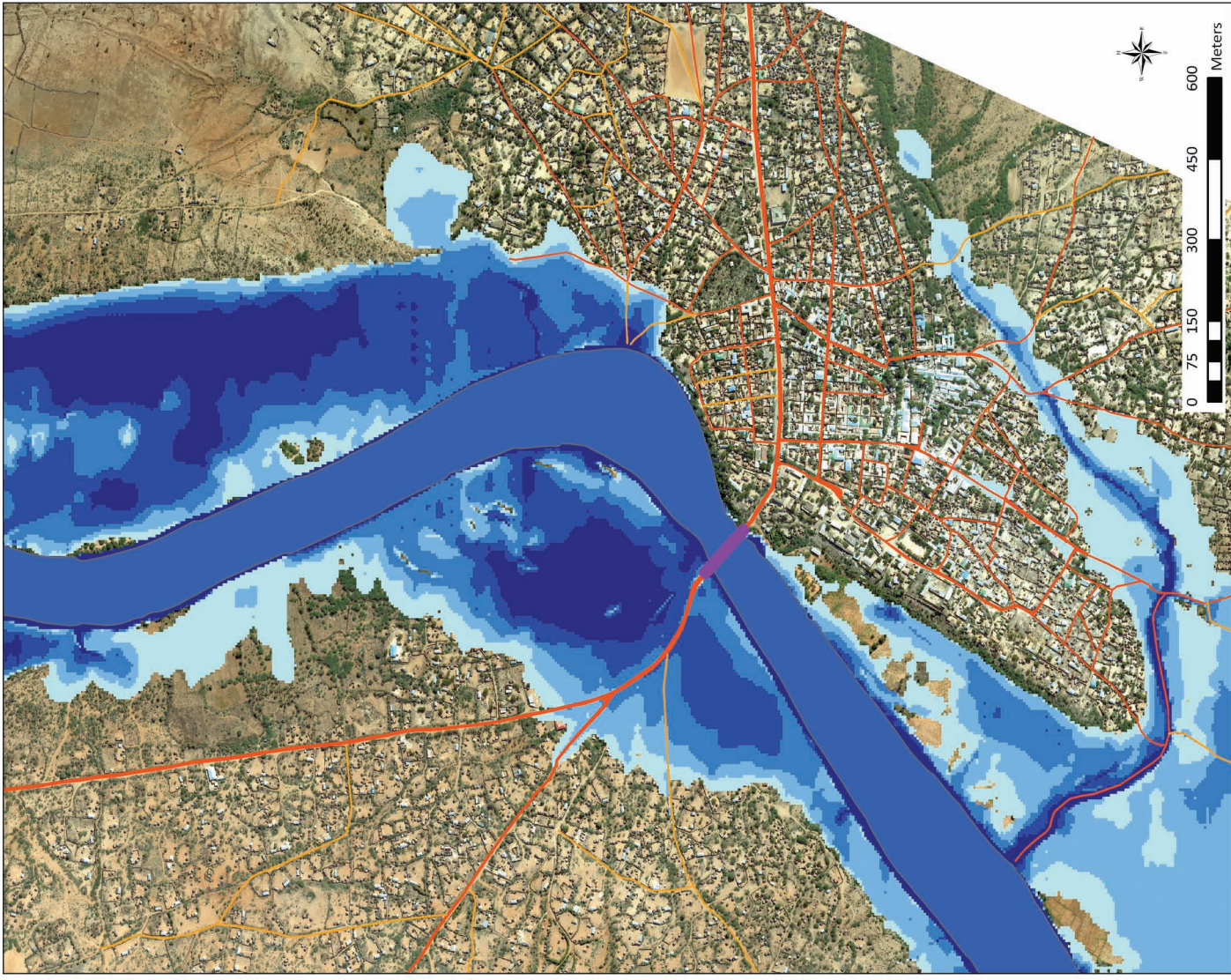
**Kharidadda halista fatahaadda ee Baardheere
 50 sanaba soo noqota mar**



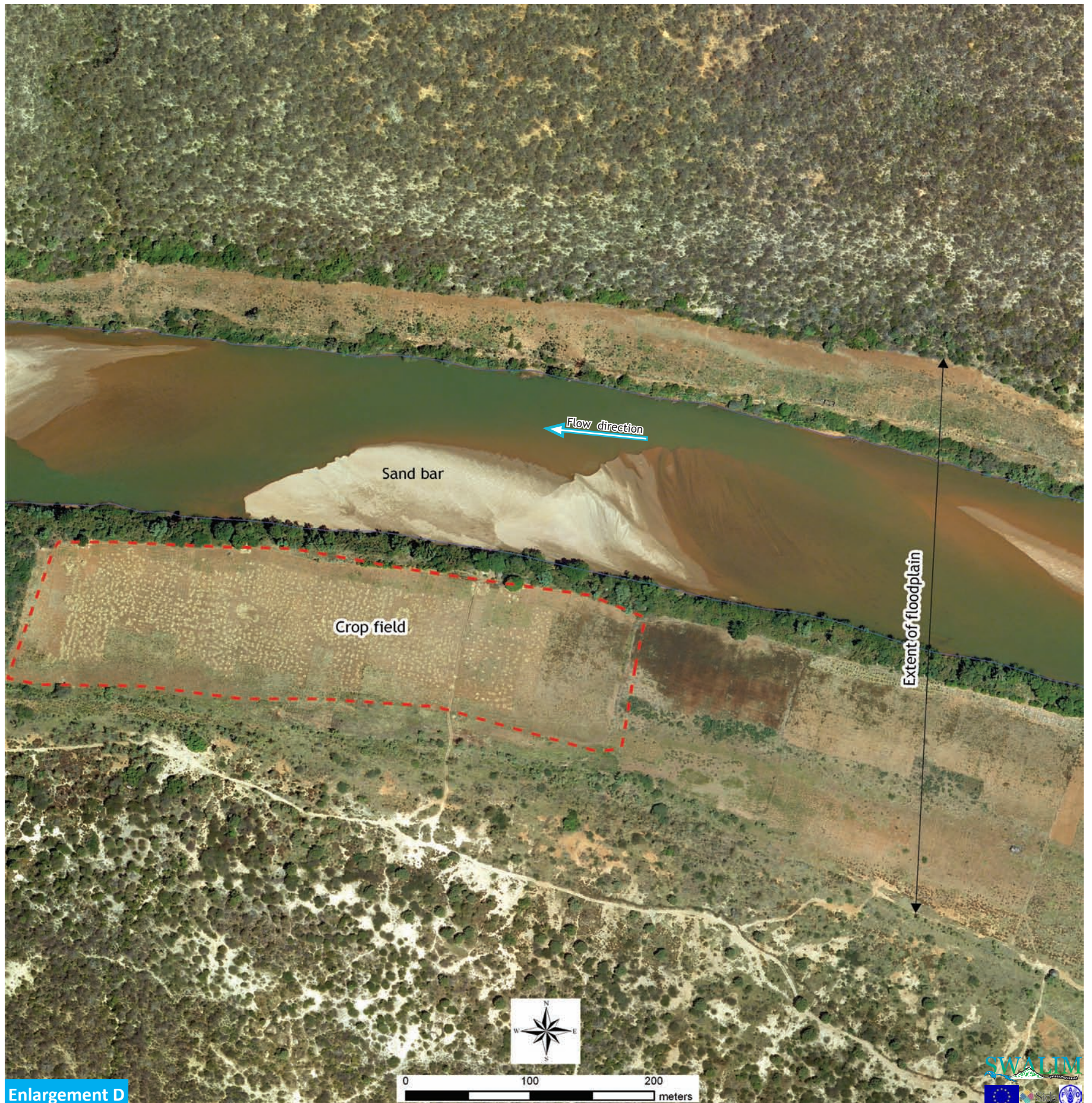
Dacdooyinka fatahaadeed oo halis ah (baaxad iyo mool) waxaa la soo saaray ayadoo la adeegsanayo HEC-RAS qaabka biyosocodka lagu cabiro. Waxa ku jira meesha waa xogta socodka wabiga oo laga cabiray jeexyada gudban, DTM. Haddii aad macluumaad dheeraad ah aad u baahato SWALIM kala soo xiriir (enquiries@faoswalim.org)

Flood risk map for Baardheere -100 year return period

**Kharidadda halista fatahaadda ee Baardheere
 100 sanaba soo noqota mar**



Crop fields Beeraha dalagyada



This image shows a typical small-sized field of cereals along the narrow Juba floodplain in the Baardheere-Bu'aale area. Since the flood plain is narrow, the extent of the arable land is limited. Most common crops here are maize, onions and tobacco.

Muuqaalkan wuxuu tusinayaa beero baaxad yar oo badar ah oo ku yaal gosha dhuuban ee Juba agagaara Baardheere iyo Bu'aale. Maadaama gosha bannaanka ciid dhigga ay dhuuban tahay, baaxadda dhulka la beerankaro way kooban tahay. Badanaa halkaan dalagyada caadiga u ah waa galey, basal iyo tubaako.