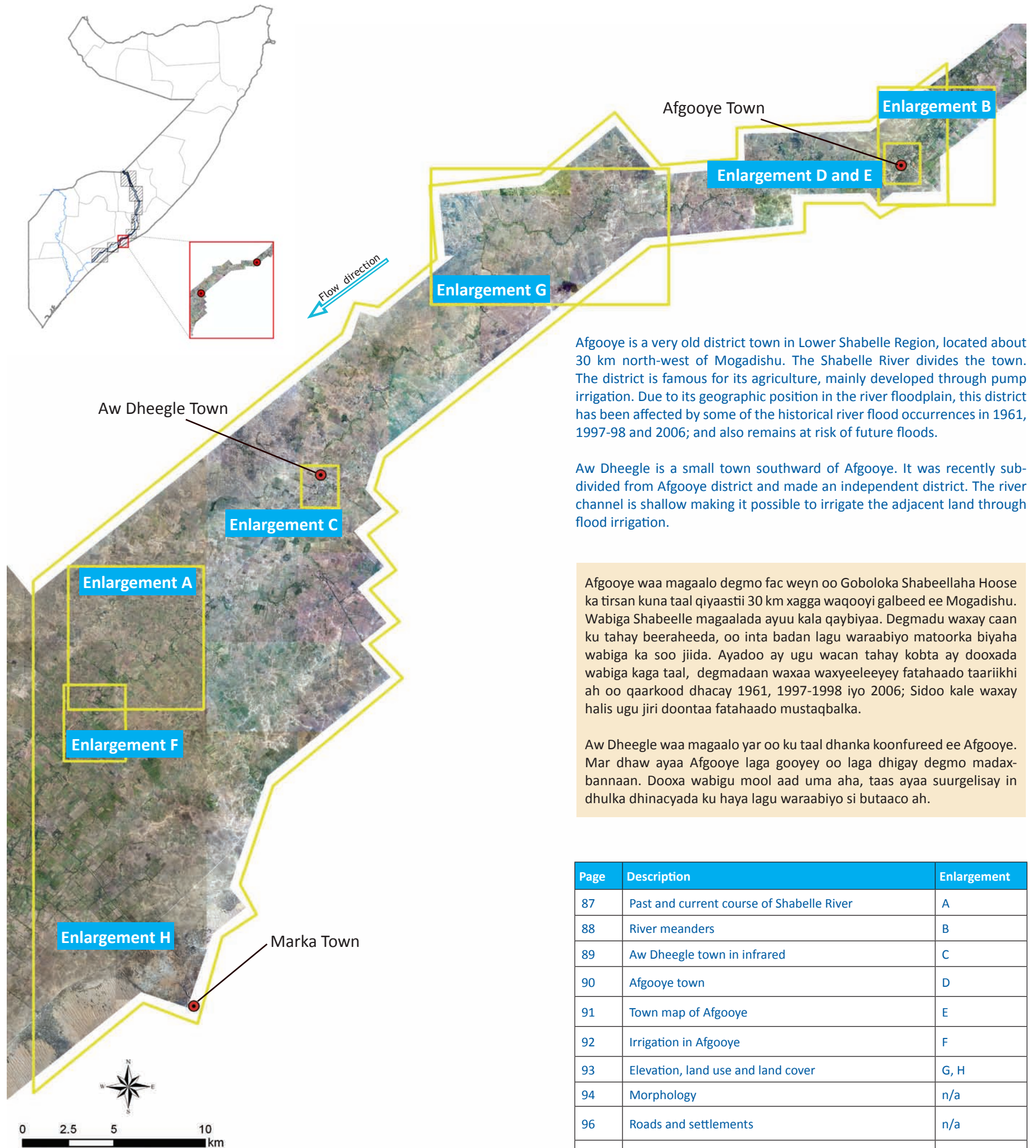


# Afgooye - Aw Dheegle



Afgooye is a very old district town in Lower Shabelle Region, located about 30 km north-west of Mogadishu. The Shabelle River divides the town. The district is famous for its agriculture, mainly developed through pump irrigation. Due to its geographic position in the river floodplain, this district has been affected by some of the historical river flood occurrences in 1961, 1997-98 and 2006; and also remains at risk of future floods.

Aw Dheegle is a small town southward of Afgooye. It was recently subdivided from Afgooye district and made an independent district. The river channel is shallow making it possible to irrigate the adjacent land through flood irrigation.

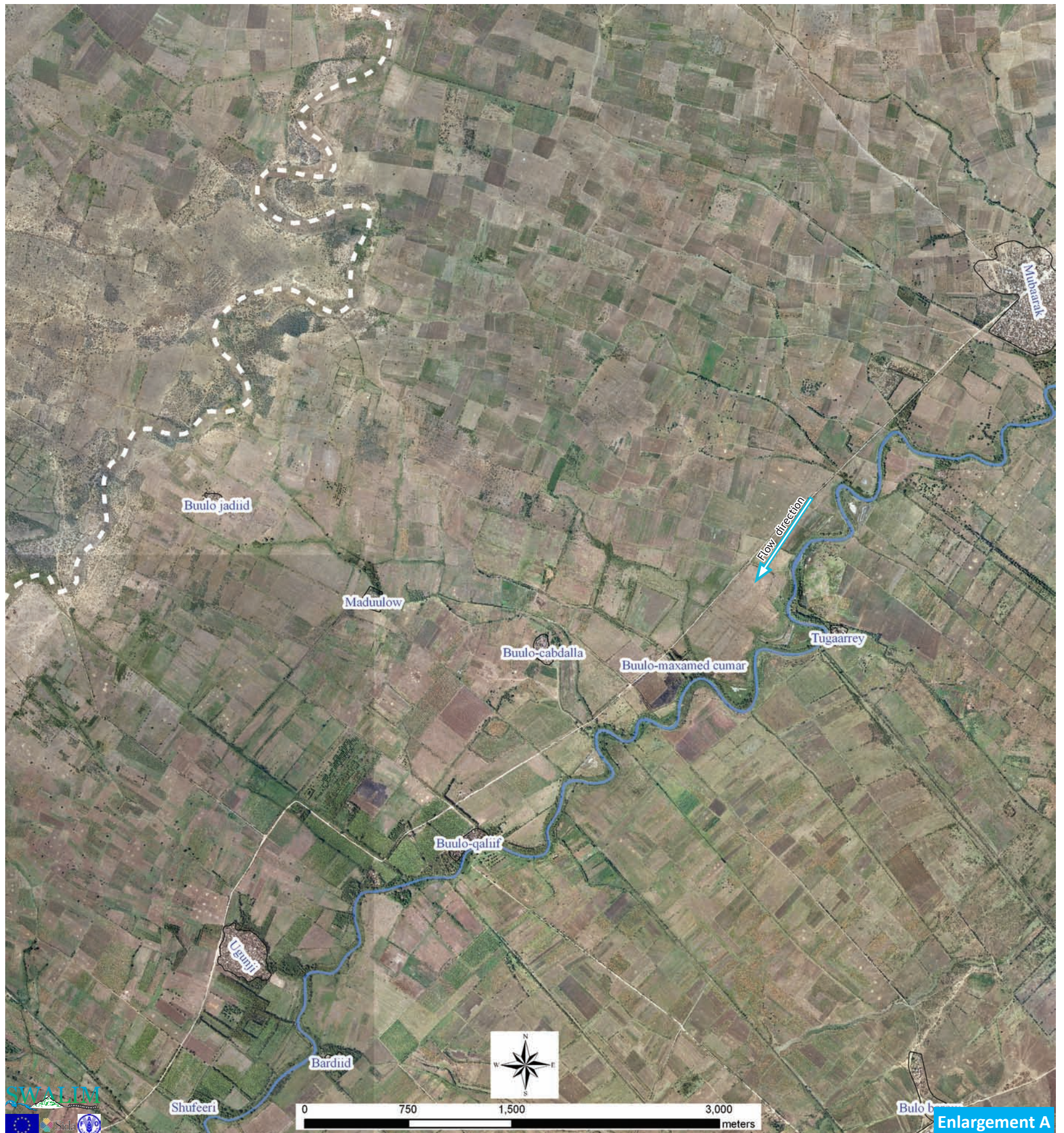
Afgooye waa magaalo degmo fac weyn oo Goboloka Shabeellaha Hoose ka tirsan kuna taal qiyaastii 30 km xagga waqooyi galbeed ee Mogadishu. Wabiga Shabeelle magaalada ayuu kala qaybiyaa. Degmadu waxay caan ku tahay beeraheeda, oo inta badan lagu waraabiyo matoorka biyaha wabiga ka soo jiida. Ayadoo ay ugu wacan tahay kobta ay dooxada wabiga kaga taal, degmadaan waxaa waxyeleeyey fatahaado taariikhi ah oo qaarkood dhacay 1961, 1997-1998 iyo 2006; Sidoo kale waxay halis ugu jiri doontaa fatahaado mustaqbalka.

Aw Dheegle waa magaalo yar oo ku taal dhanka koonfureed ee Afgooye. Mar dhaw ayaa Afgooye laga gooyey oo laga dhigay degmo madaxbannaan. Dooxa wabigu mool aad uma aha, taas ayaa suurgelisay in dhulka dhinacyada ku haya lagu waraabiyo si butaaco ah.

Page	Description	Enlargement
87	Past and current course of Shabelle River	A
88	River meanders	B
89	Aw Dheegle town in infrared	C
90	Afgooye town	D
91	Town map of Afgooye	E
92	Irrigation in Afgooye	F
93	Elevation, land use and land cover	G, H
94	Morphology	n/a
96	Roads and settlements	n/a
97	Climate and water sources	n/a
98	Flood risk maps	n/a



## Past and current course of the Shabelle River Marinkii hore iyo kan hadda ee Wabiga Shabeelle

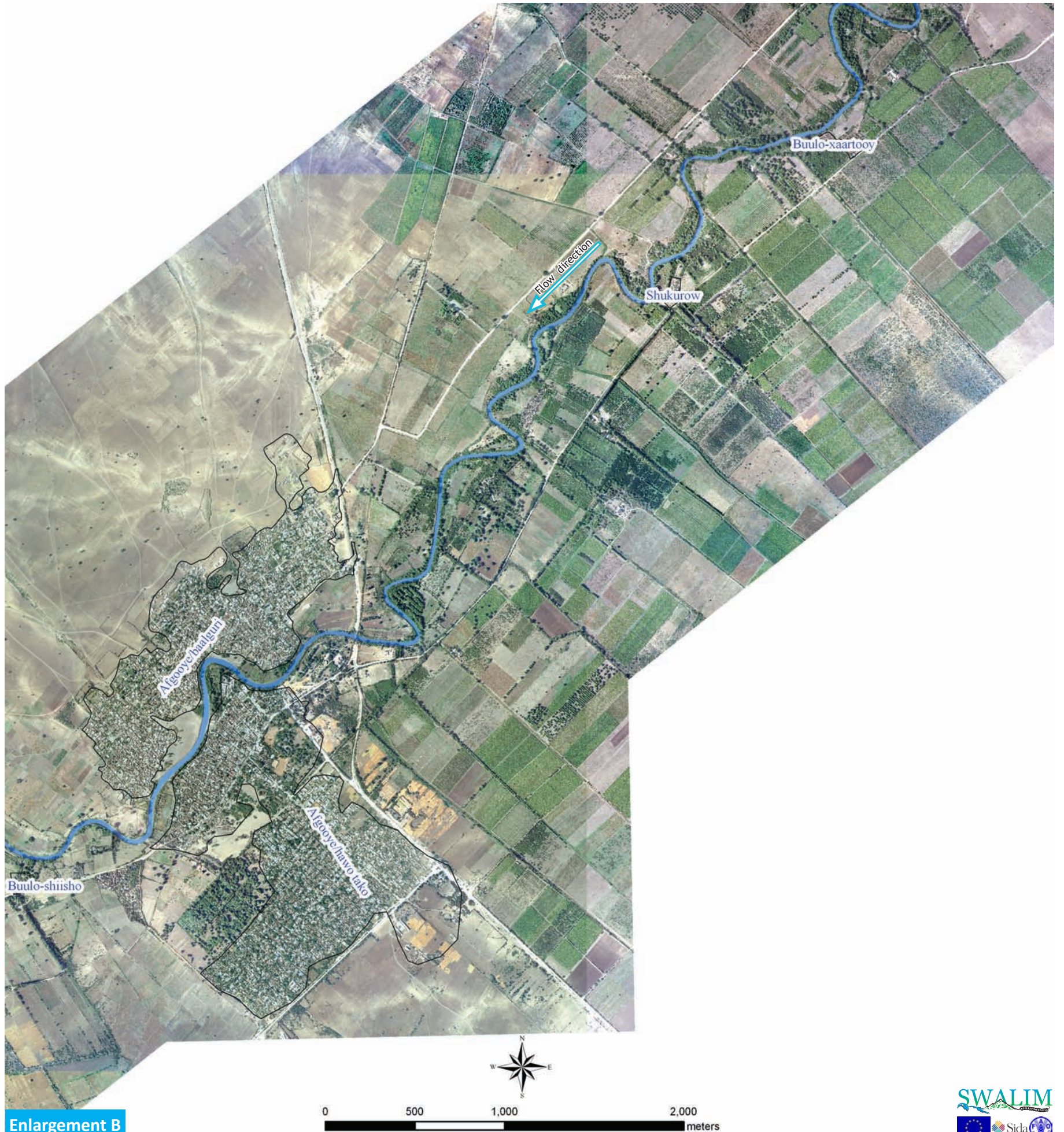


The Shabelle River has been changing its course over time. This image shows an old course marked by the white dotted line. The river has since stabilised in its current course. Many farms use pump irrigation to grow fruit trees, cereals, and vegetables. This area is vulnerable to flooding.

Wabiga Shabeelle wuxuu badbadeley marinkiisa in muddo ah. Muuqaalkaan wuxuu tusinayaa marin fac hore oo lagu calaamadiyey xariijin cad oo googo'an. Muddo ka dib wabigu wuxuu ku xasiley marinka hadda uu ku socdo. Beero badan waxaa loo isticmaalaa matoorro waraab si loogu beero geed mirood, badar iyo qudaar. Geyigaan wuxuu u nugul yahay fatahaad.



## River meanders Leexleexyada wabiga



The river forms many meanders throughout its course. This is also a very well developed agricultural zone. The extensive level of farming is visible on both sides of the river. Afooye is well connected to other regions as shown by the road network (white lines).

Wabigu wuxuu sameeyaa leexleexyo badan oo ku yaal inta marinkiisu ku dherersan yahay. Meeshaan waa dhul beereed aad iyo aad u hormarsan. Heerka baaxadda beeraha waxaa lagu arkayaa labada dhacal ee wabiga. Afooye si wacan ayuu ugu xiran yahay gobollada kale ee dalka sida lagu tusinaayo isku xirka waddooyinka (xariijimaha cad).



## Aw Dheegle town in infrared Magaalada Aw Dheegle oo lagu muujiyey shucaaca casaanka



Aw Dheegle district is one of the important agricultural zones of Lower Shabelle and it is where gravity irrigation was first introduced. The bridge (inset) at Malable provides access to Afgooye town. The red with gridded patterns represents tree crops.

Degmada Aw Dheegle waa muhiim xagga dhulbeereedka marka la eego Gobolka Shabeellaha Hoose waxaana ka bilaabma dhulka waraabka butaacada ah ee ugu horrayn dalka laga bilaabay. Kaabadda ku taal Malable (sida ka muuqata, bidix sare) ayaa Aw Dheegle ku xirta Magaalada Afgooye. Muuqaalka Casaanka ee hannaanka shabaqa u eg wuxuu tusmaynayaa beeraha geed-mirood ka ah.



## Afgooye town Magaalada Afgooye



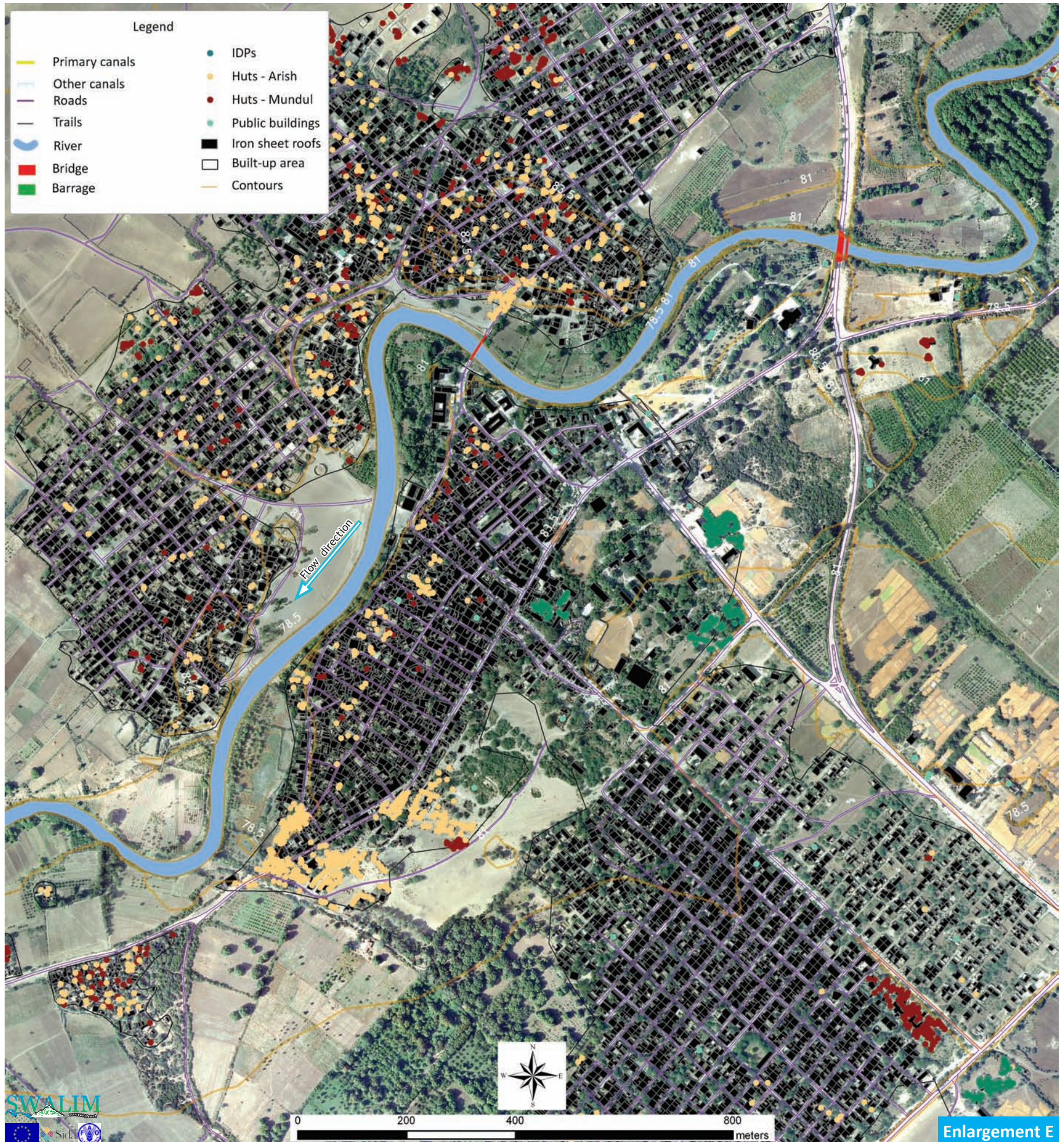
Enlargement D

Afgooye is a crucial hub from Mogadishu towards the west and north of the country. Much of the produce from this area goes to Mogadishu but in the past the produce was also processed by a state owned fruit factory, now abandoned.

Afgooye waa meel lagama maarmaan marka Muqdishowh in looga gubo ay tahay galbeedka iyo waqooyiga dalka. Waxasoosaarka magaaladaan intiisa badan wuxuu aadaa Mogadishu, waagii hore waxaa qaar lagu habayn jirey warshadda miraha, oo hadda laga tagay.

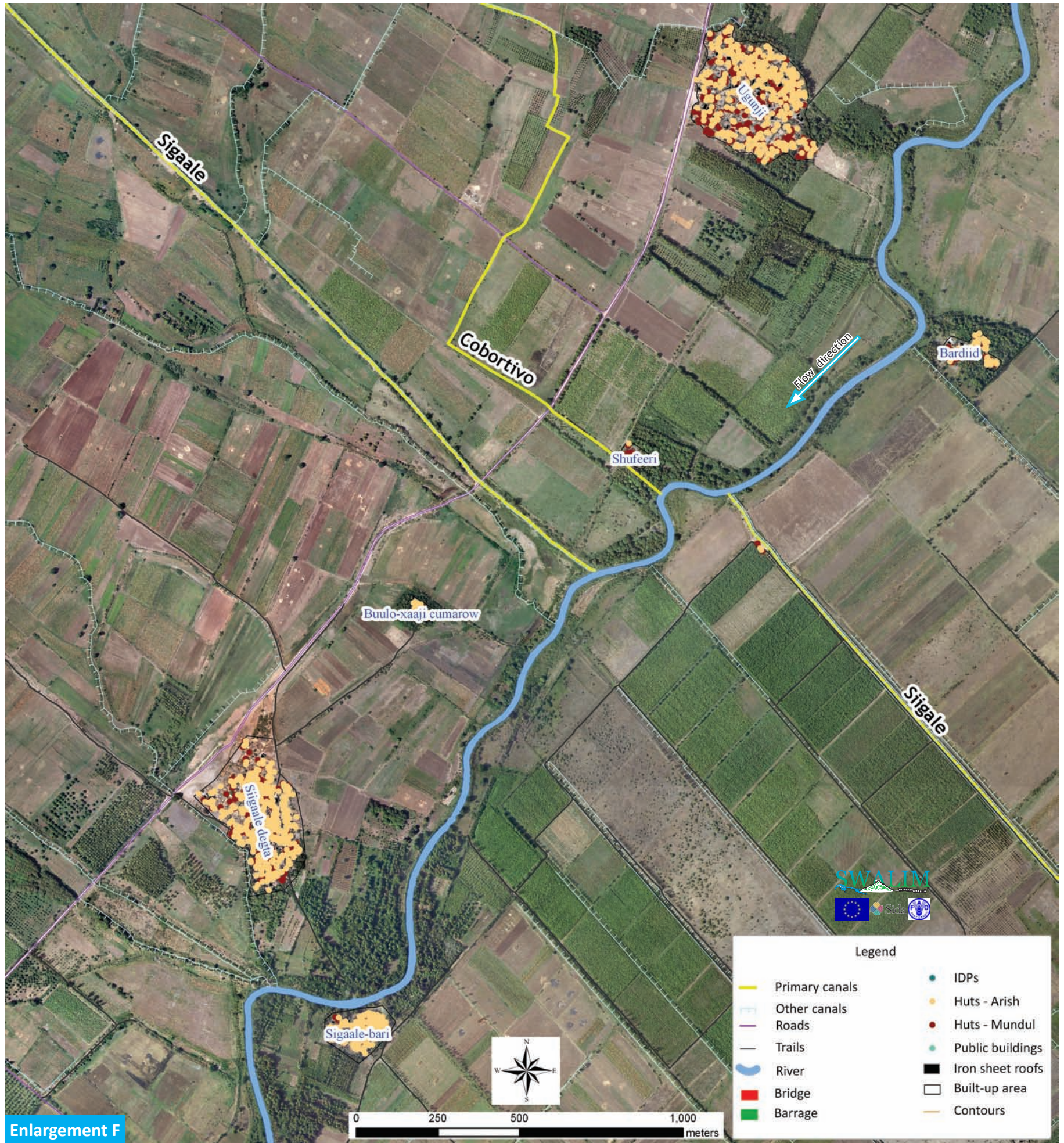


## Town map of Afgooye Khariidadda magaalada Afgooye





## Irrigation in Afgooye Waraabka Afgooye



Enlargement F

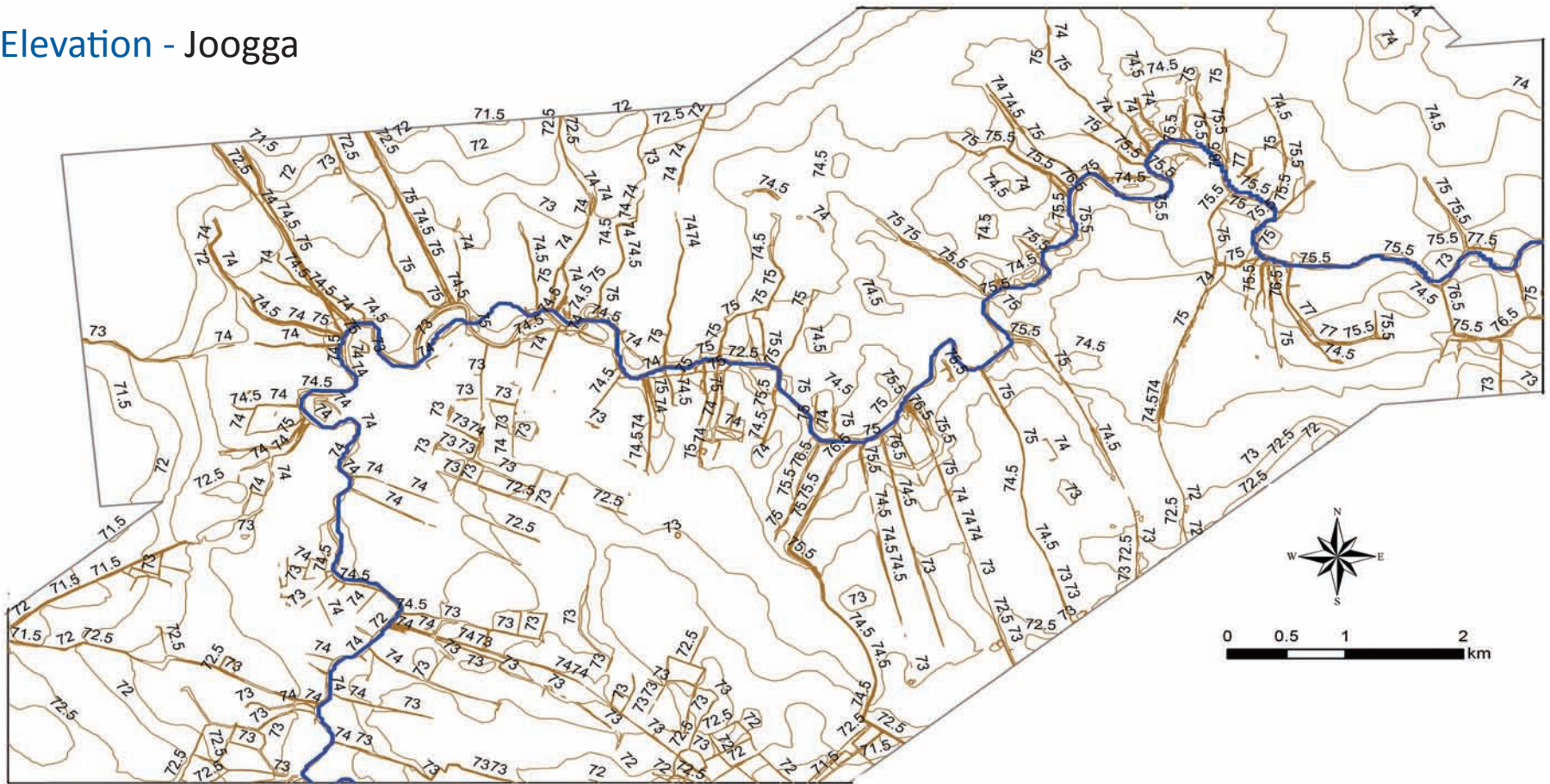
A combination of high rainfall and a well developed irrigation system allows farmers in this area to grow crops all year round. The image shows growing crops, harvested fields and also some tracts of land that have been left fallow. The thick yellow lines show the major irrigation canals.

Isu geynta roobka badan iyo habka waraabka oo si fican u hormarsan waxay suurogelinayaan in beeraleyda degaankaan ay wax beerato waqtiga sanadka oo idil. Muuqaalku wuxuu tusinayaa dalagyo baxaya, beero la goostay, iyo qaar beeraha ka tirasan oo la dhaafay si loo nasiyo dhulka. Xariijinta qarada weyn ee hurdiga ah waxay tusinaysaa keliyada waraabka muhiimadda leh.



## Elevation, land use and land cover Joogga, isticmaalka dhulka iyo hu'ga dhulka

### Elevation - Joogga



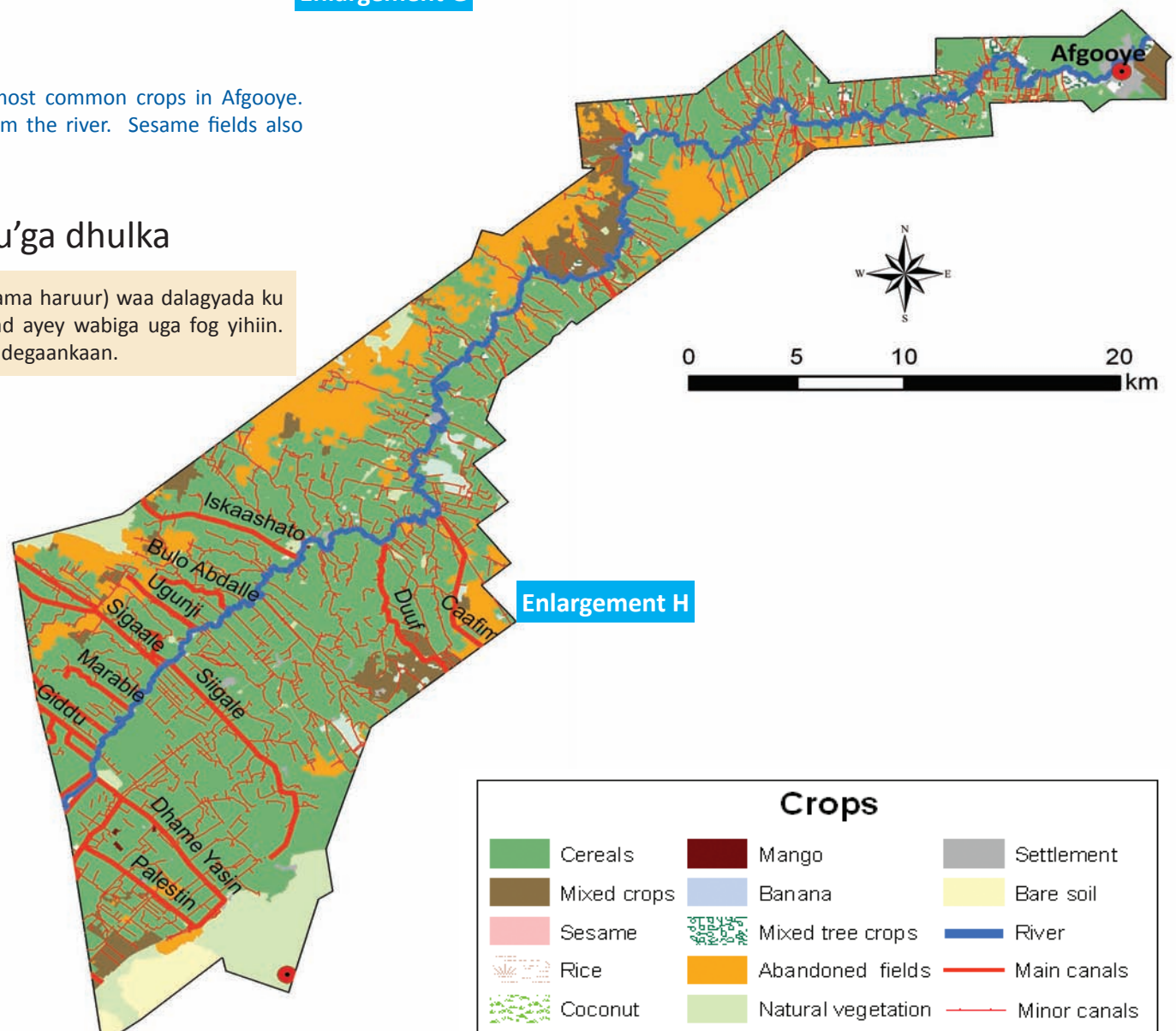
Enlargement G

### Land use and land cover

Cereals (maize and sorghum) are the most common crops in Afgooye. Abandoned crop fields are far away from the river. Sesame fields also occur in this area.

### Isticmaalka dhulka iyo hu'ga dhulka

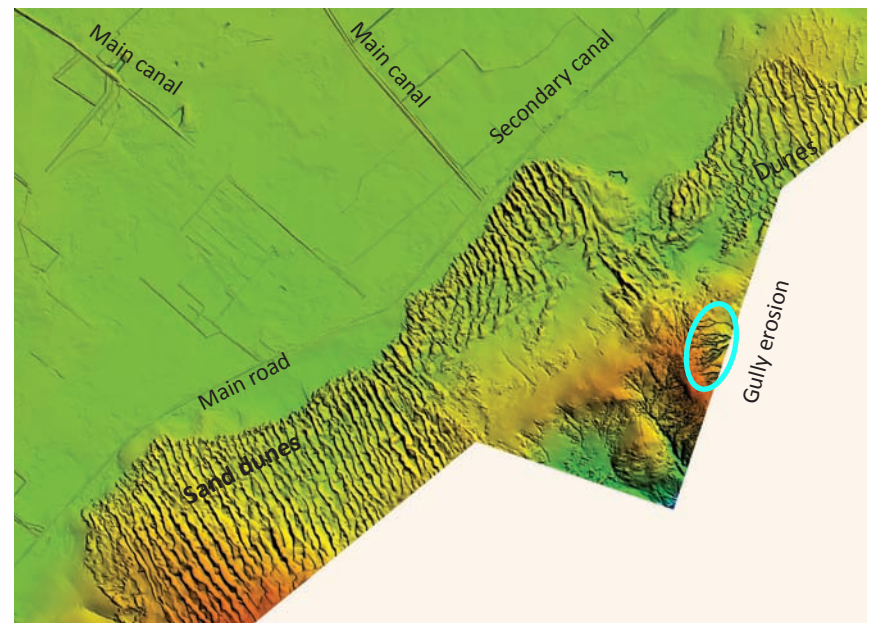
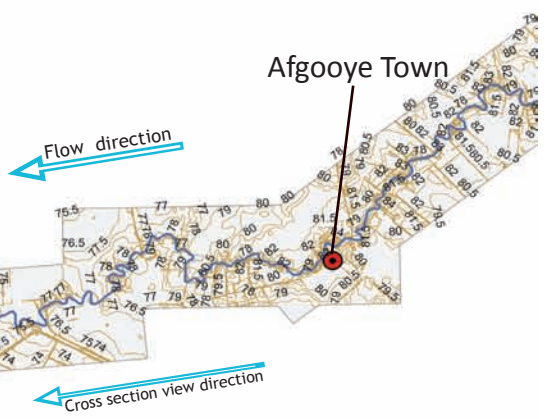
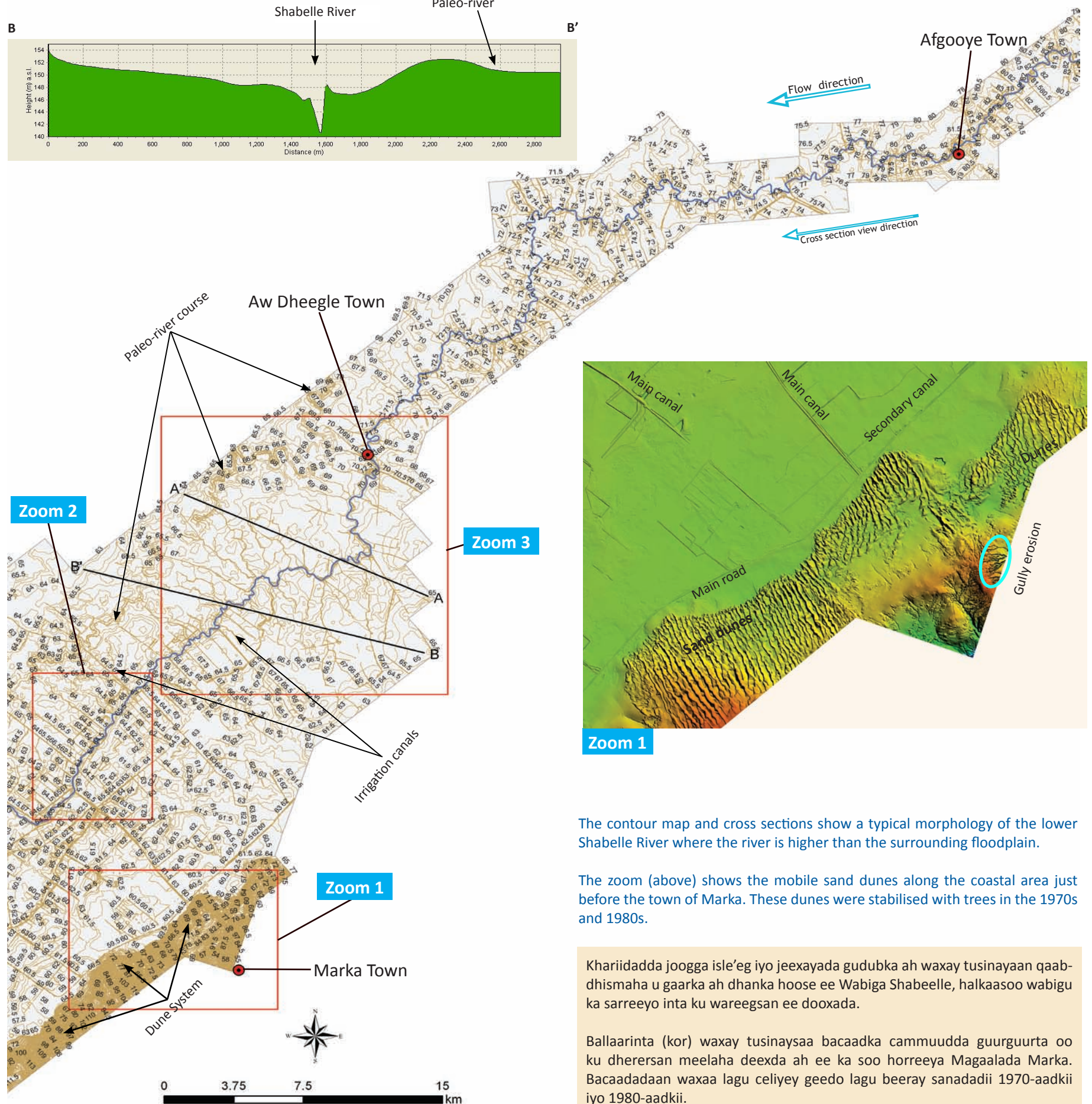
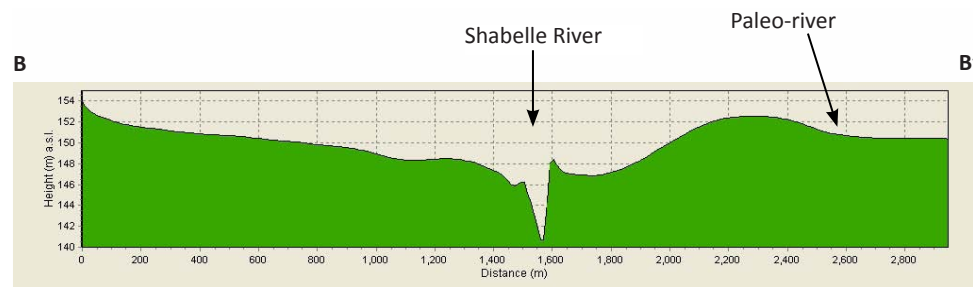
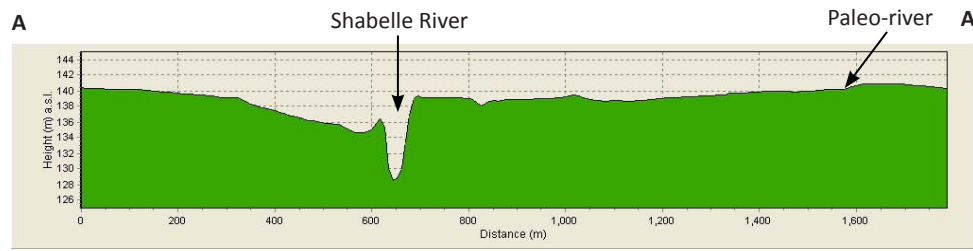
Dalagyada badarka (galey iyo masago ama haruur) waa dalagyada ku badan Afgooye. Beeraha laga tagay aad ayey wabiga uga fog yihiin. Beeraha sisinta ayaa iyagana laga helaa degaankaan.



Enlargement H



# Morphology Qaab-dhismaha



Zoom 1

The contour map and cross sections show a typical morphology of the lower Shabelle River where the river is higher than the surrounding floodplain.

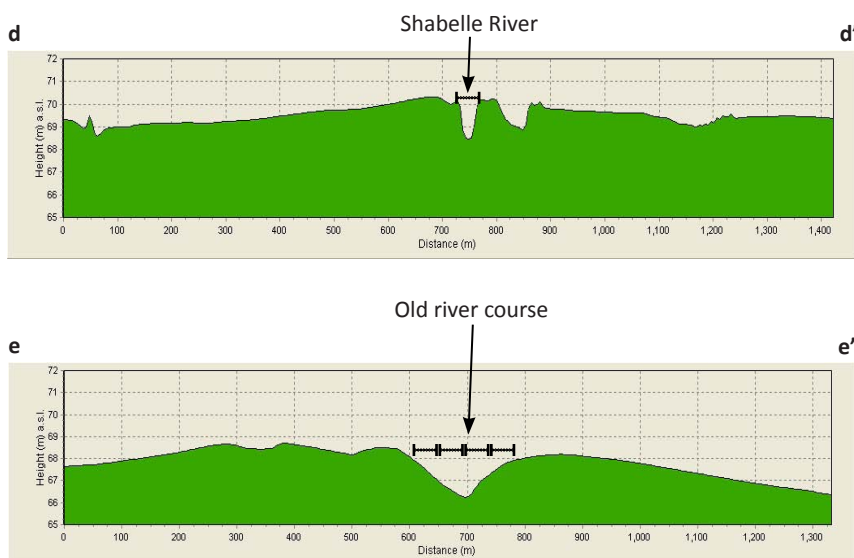
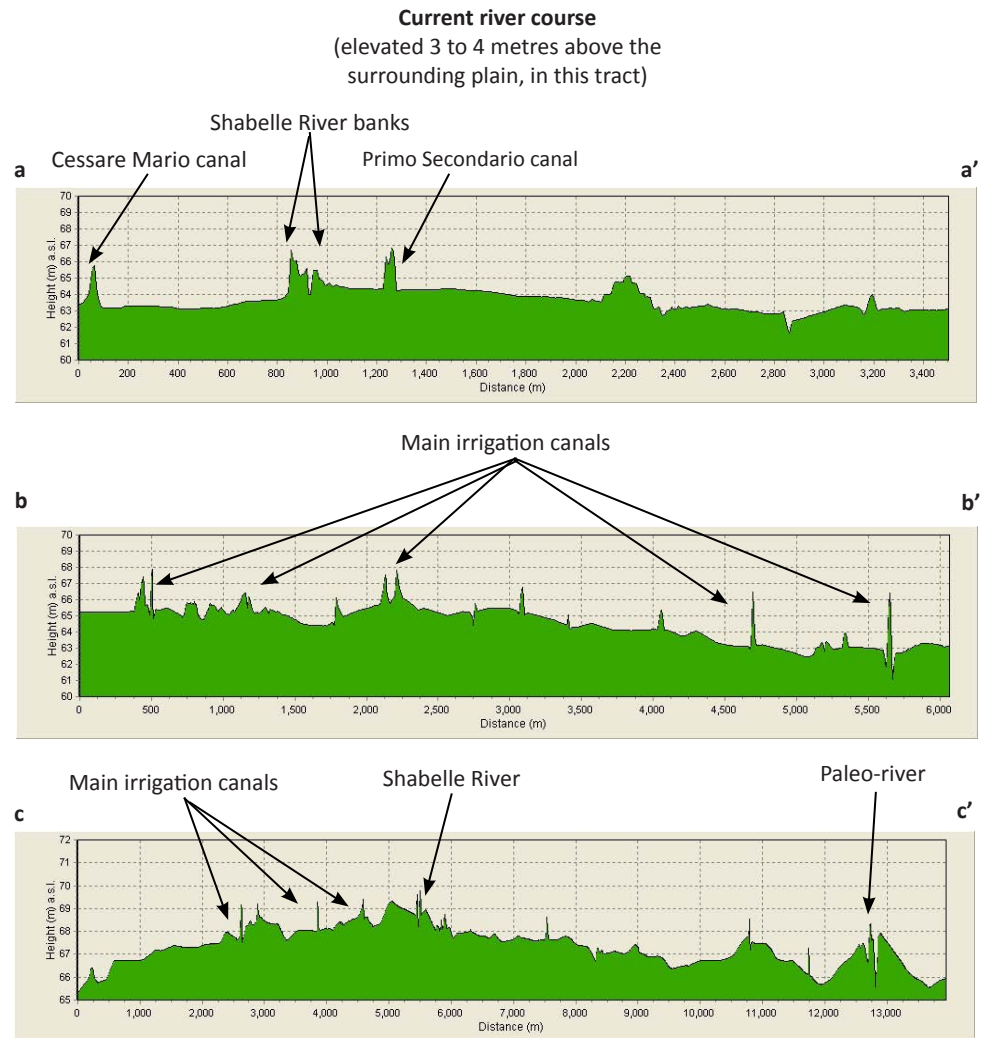
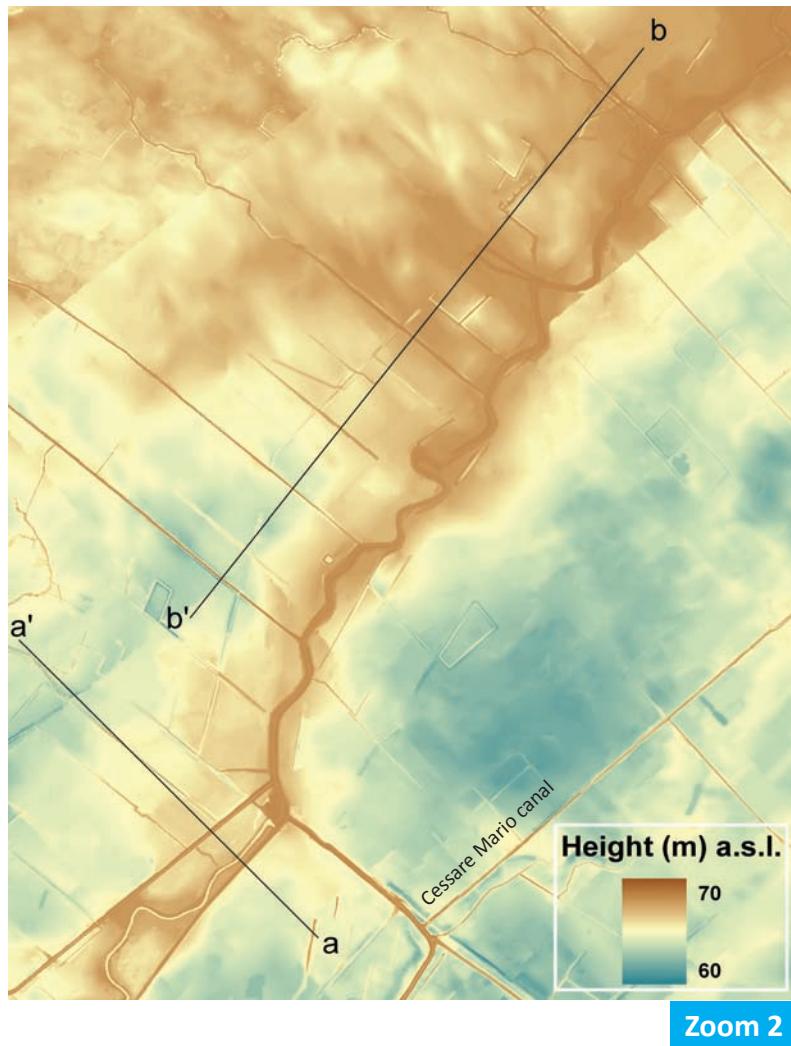
The zoom (above) shows the mobile sand dunes along the coastal area just before the town of Marka. These dunes were stabilised with trees in the 1970s and 1980s.

Khariidadda joogga isle'eg iyo jeexayada gudubka ah waxay tusinayaan qaab-dhismaha u gaarka ah dhanka hoose ee Wabiga Shabeelle, halkaasoo wabigu ka sarreeyo inta ku wareegsan ee dooxada.

Ballaarinta (kor) waxay tusinaysaa bacaadka cammuudda guurguurta oo ku dherersan meelaha deexda ah ee ka soo horreeya Magaalada Marka. Bacaadadaan waxaa lagu celiyey geedo lagu beeray sanadadii 1970-aadkii iyo 1980-aadkii.

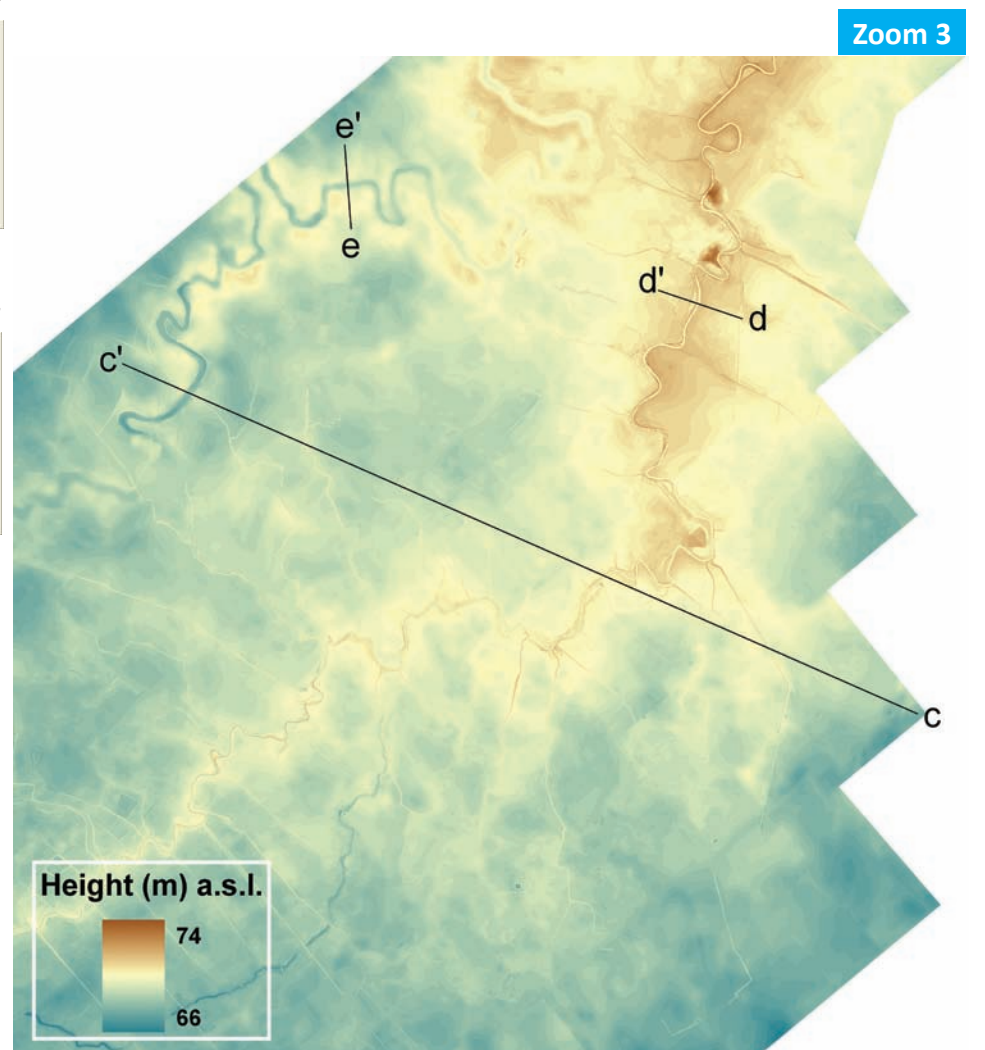


## Morphology Qaab-dhismaha



Note the difference between the current river banks and the old ones. The old river course is almost 4 times wider than the current one and almost four fifths deeper than the current one (see the length references used in profiles d-d' and e-e').

Eeg faarqiga u dhexeeya jiinka wabiga hadda iyo kuwii faca hore. Marinkii waagii hore qiyaastii wuxuu in afar jeer ka badan ka weyn yahay marin dooxa hadda wabigu maro, hadana shan meelood afar ayuu ka qotodheer yahay midka hadda uu maro ( eeg dhererka tusaalooyinka lagu isticmaalay qotada d-d' iyo e-e').



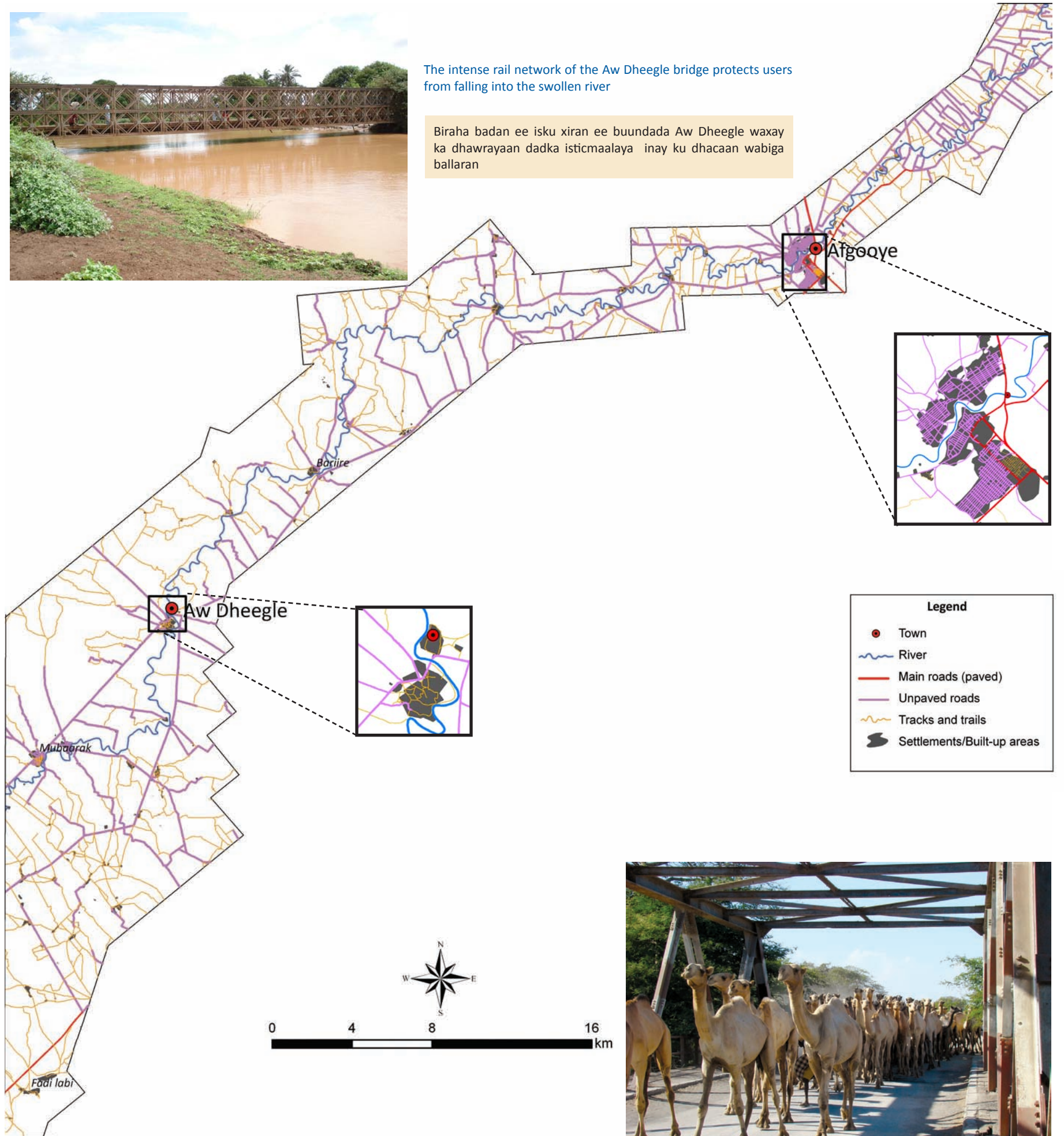


## Roads and settlements Waddooyinka iyo degmooyinka



The intense rail network of the Aw Dheegle bridge protects users from falling into the swollen river

Biraha badan ee isku xiran ee buundada Aw Dheegle waxay ka dhawrayaan dadka isticmaalaya inay ku dhacaan wabiga ballaran



**Legend**

- Town
- ~ River
- Main roads (paved)
- Unpaved roads
- Tracks and trails
- Settlements/Built-up areas



Camels make good use of Afgooye bridge

Geel si fiican u isticmaalaya Buundada Afgooye

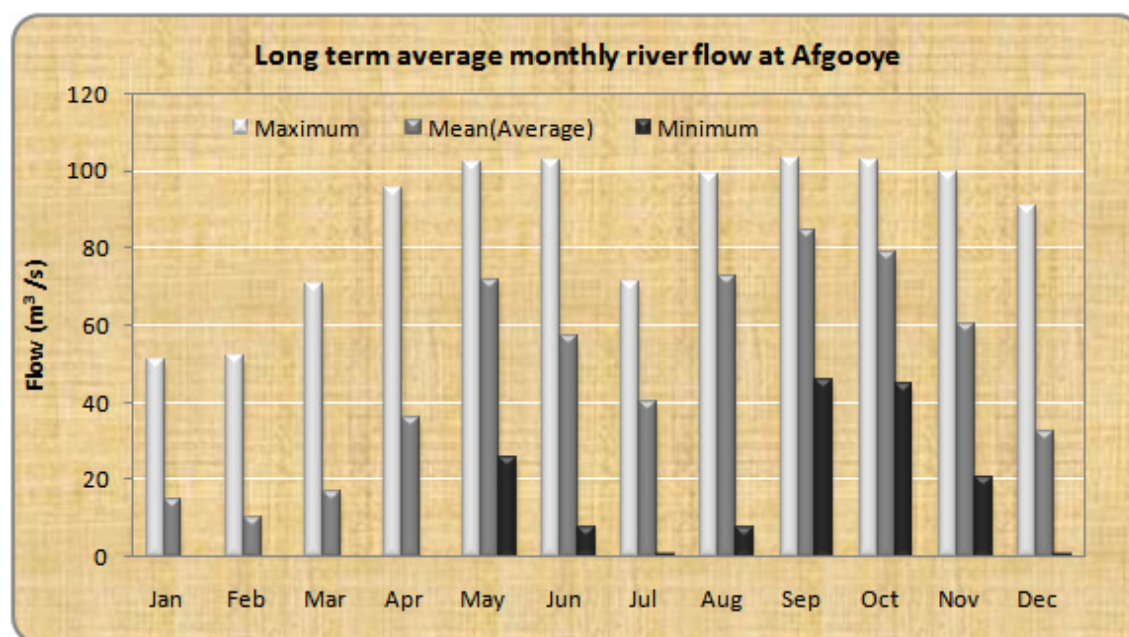


## Climate and water resources Cimilad iyo khayraadka biyaha

Afgooye area receives a mean annual rainfall of 584 mm. Most of this rainfall is distributed throughout the year. January and February are however generally dry compared to the other months. May and November are the wettest months in this area. Temperatures are high, and the same applies to potential evapotranspiration.

Afgooye waxay heshaa celcelis roobab sanadkiiba 584 mm ah. Inta badan da'idda roobabkan waxa ay ku baahsan tahay sanadkoo dhan. Guud ahaan, Janaayo iyo Febraayo waa qalayl marka loo eego bilaha kale. May iyo Nofambar waa bilaha ugu qoyaan badan ee gobolka. Kulbeegyadu waa sareeyaan sidoo kale waxa la mid ah uumi baxa.

Long term average monthly climatic values at Afgooye												
Climatic variable	Jan	Feb	Mar	Apr	May	Jun	Jul	Aug	Sep	Oct	Nov	Dec
Rainfall (mm)	2.0	2.0	10.0	91.0	94.0	64.0	58.0	26.0	15.0	62.0	121.0	39.0
Mean temperature (°C)	27.5	28.0	28.8	29.0	28.0	26.7	26.0	26.2	26.8	27.0	27.0	27.3
Minimum temperature (°C)	21.6	21.8	23.0	23.5	23.1	22.6	21.5	21.5	21.7	22.0	21.8	21.6
Maximum temperature (°C)	33.5	34.1	35.0	34.3	32.8	31.2	30.5	31.1	32.0	32.2	32.3	33.0
Potential evapotranspiration (mm)	192	182	210	168	148	132	151	161	171	167	150	170
Wind speed (km/hr)	14.4	15.1	13.7	9.0	9.0	10.8	10.8	11.2	11.2	10.1	7.6	11.5



### River gauge station details

Grid reference: 2:08:40 N, 45:07:30 E

Altitude: 77.0 m a.s.l

Catchment area: 278 000 km<sup>2</sup>

Daily mean flow: 48.0 m<sup>3</sup>/s

Current status: Not operational

River flow in Afgooye remains almost the same in several months, other than January to March when they are low. The river channel at this point is shallow, and easily reaches bank full even when the flows upstream are not so high.

Inta badan socodka biyaha wabigu ee Afgooye waa isku mid bilo badan marka laga reebo Janaayo ilaa Maarso oo uu aad u hooseeyo. Dooxa wabiga meeshan waa mid qoto gaaban, waxana biyuhu gaaraan gabiyada xitaa haddii socodka biyaha wabigu xaggiisa sare aanu badnayn.

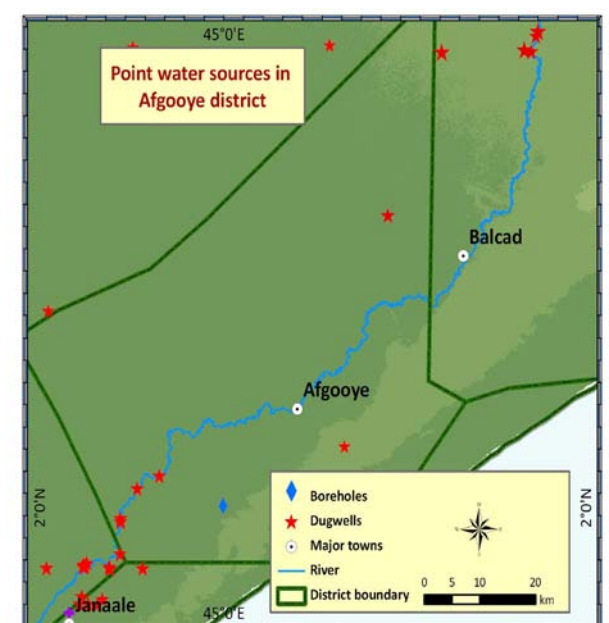


Animal trough connected to a shallow well near Afgooye town

Darka xoolaha oo ku xiran ceel gaaban meel u dhow magaalada Afgooye

Majority of the residents of Afgooye rely on the river water for their domestic and commercial needs. Some families use shallow wells, which are better sources especially if protected.

Inta badan dadka degan Afgooye waxay ku tiirsan yihiin biyaha wabiga oo ay u isticmaalaan baahida guriga iyo ganacsiga. Qaar ka mid qoysaska waxay isticmaalaan ceelasha gaagaaban kuwaas oo si fiican loo xafiday.





**Flood risk map for Afgooye - 5 year return period**

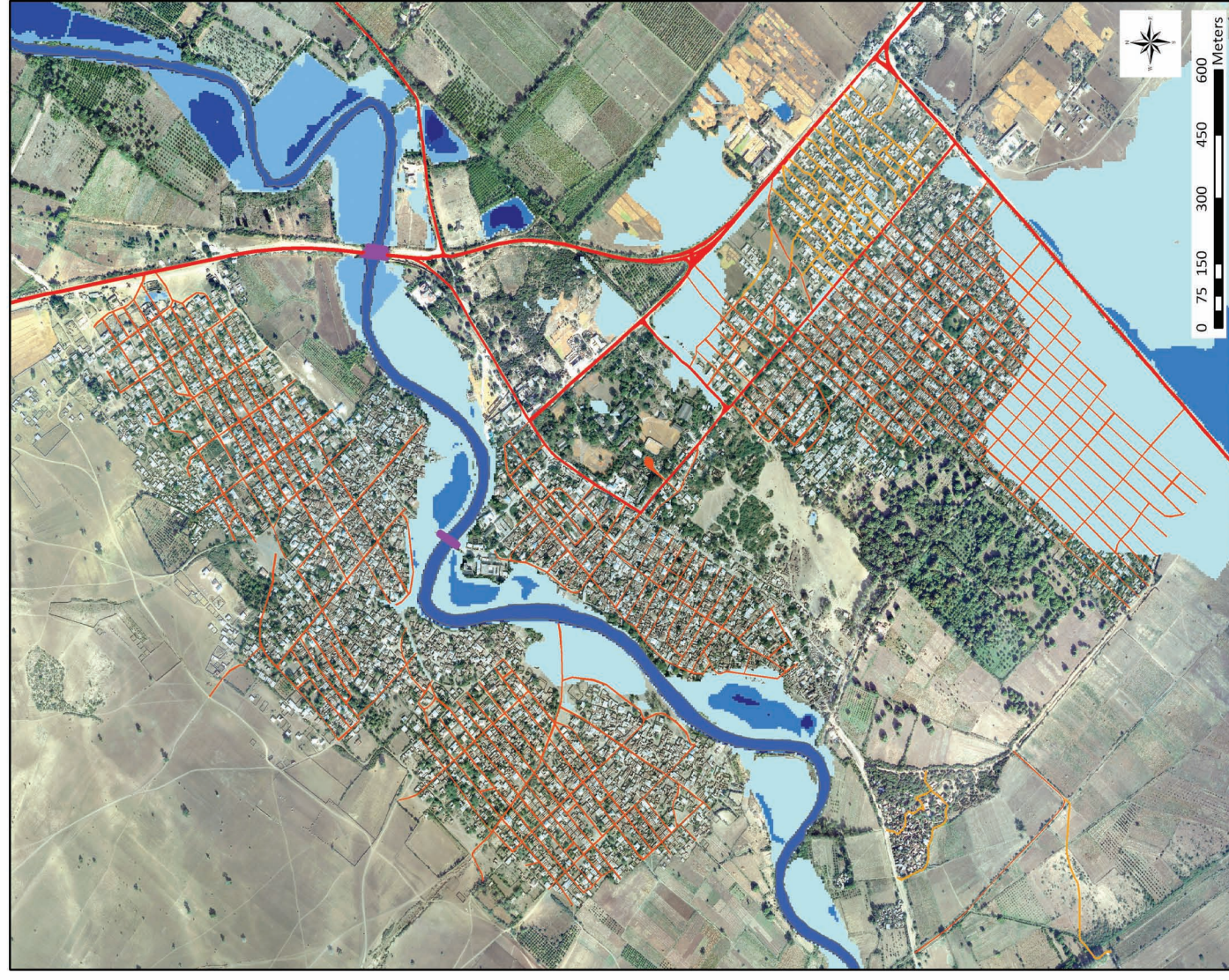
**Kharidadda halista fatahaadda ee Afgooye  
 5 sanaba soo noqota mar**

*The flood risk scenarios (extent and depth) were generated using HEC-RAS hydrodynamic model. Inputs included observed flow data, river cross sections, DTM. For more information contact SWALIM (enquiries@faoswalim.org)*



**Flood risk map for Afgooye - 20 year return period**

**Kharidadda halista fatahaadda ee Afgooye  
 20 sanaba soo noqota mar**

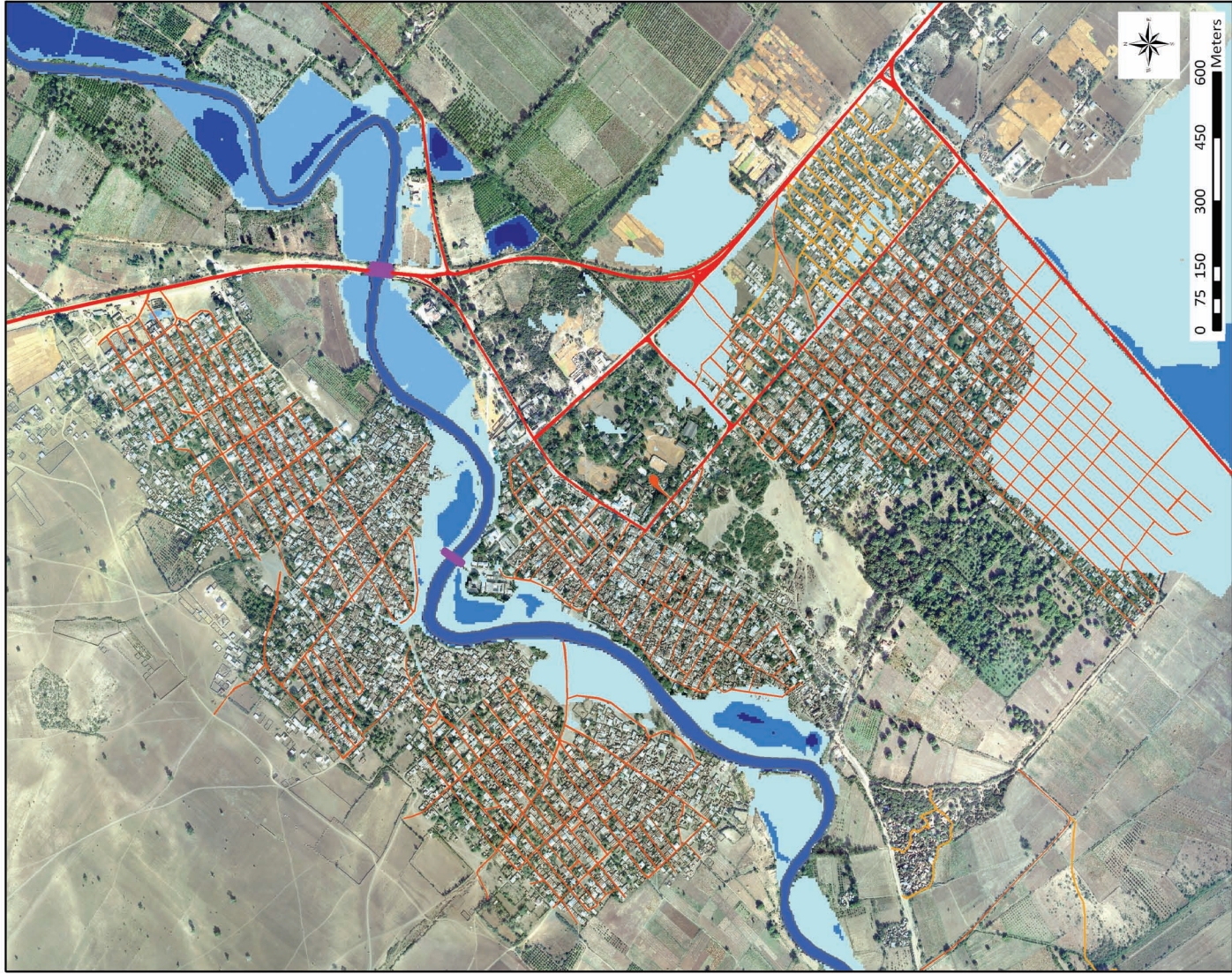




**Flood risk map for Afgooye - 50 year return period**

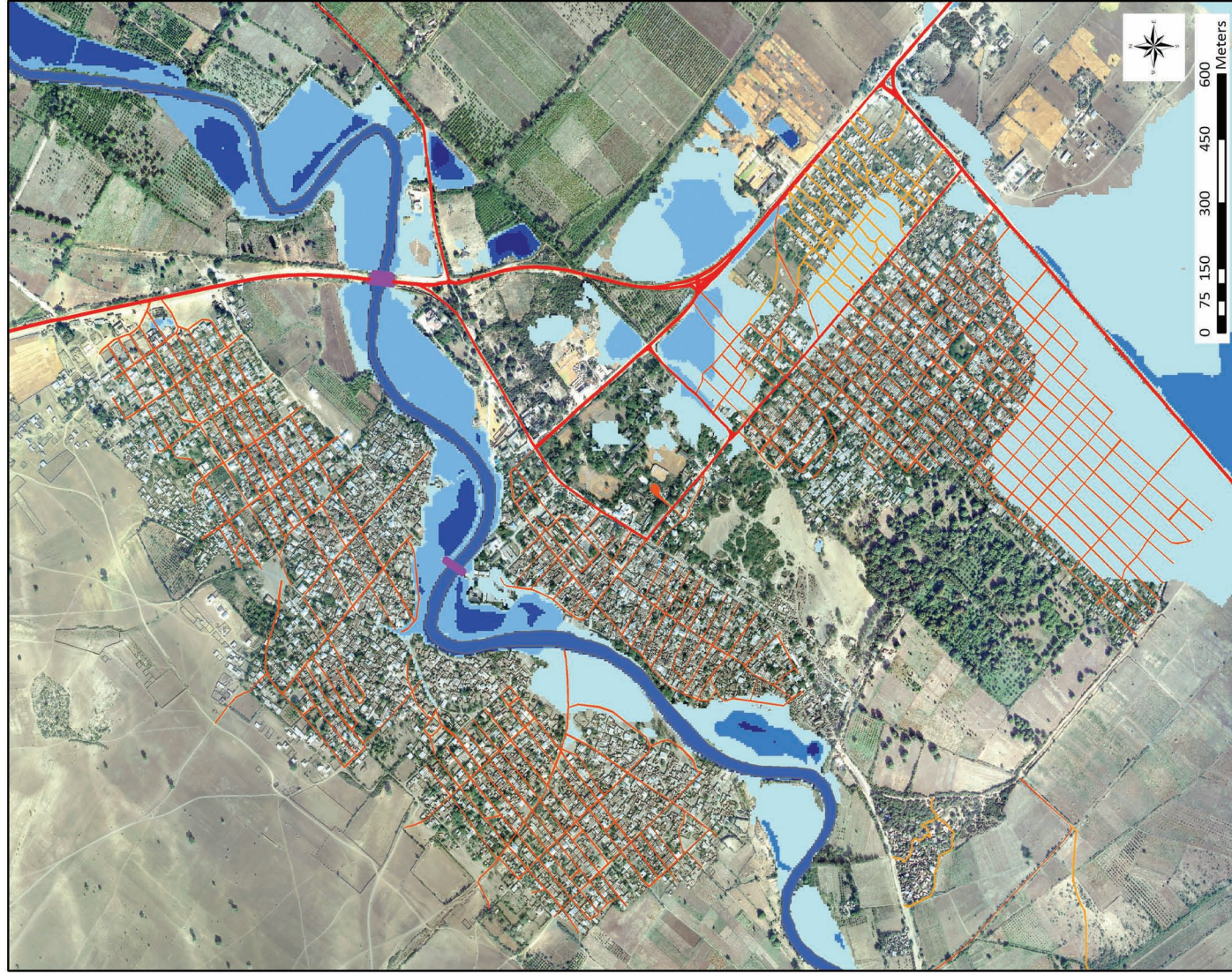
**Kharidadda halista fatahaadda ee Afgooye  
50 sanaba soo noqota mar**

*Dacdooyinka fatahaadeed oo halis ah (baaxad iyo mool) waxaa la soo saaray ayadoo la adeegsanayo HEC-RAS qaabka biyosocodka lagu cabiro. Waxa ku jira meesha waa xogta socodka wabiga oo laga cabiray jeexyada gudban, DTM. Haddii aad macluumaad dheeraad ah aad u baahato SWALIM kala soo xiriir (enquiries@faoswalim.org)*



**Flood risk map for Afgooye - 100 year return period**

**Kharidadda halista fatahaadda ee Afgooye  
100 sanaba soo noqota mar**

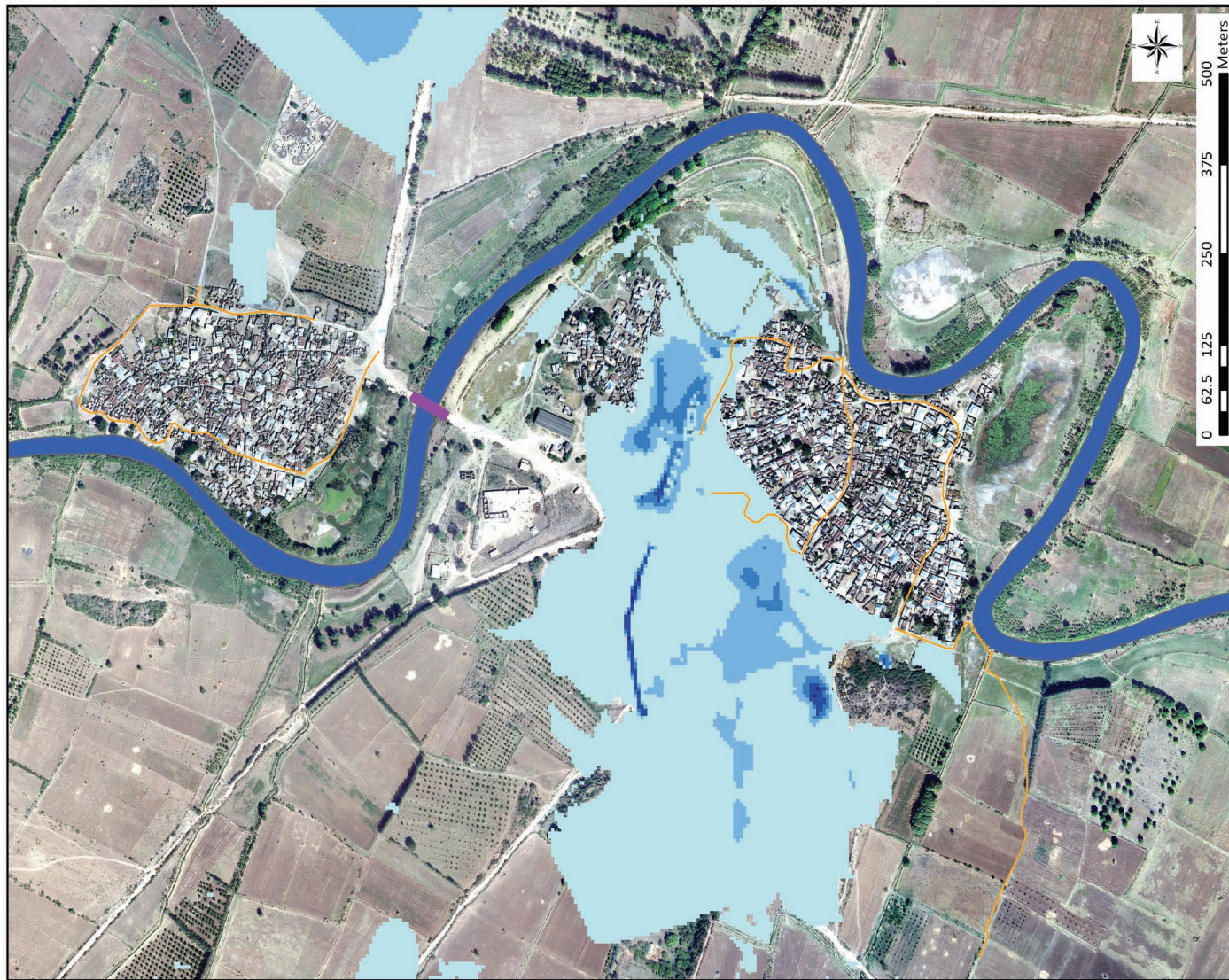




**Flood risk map for Aw Dheegle - 5 year return period**

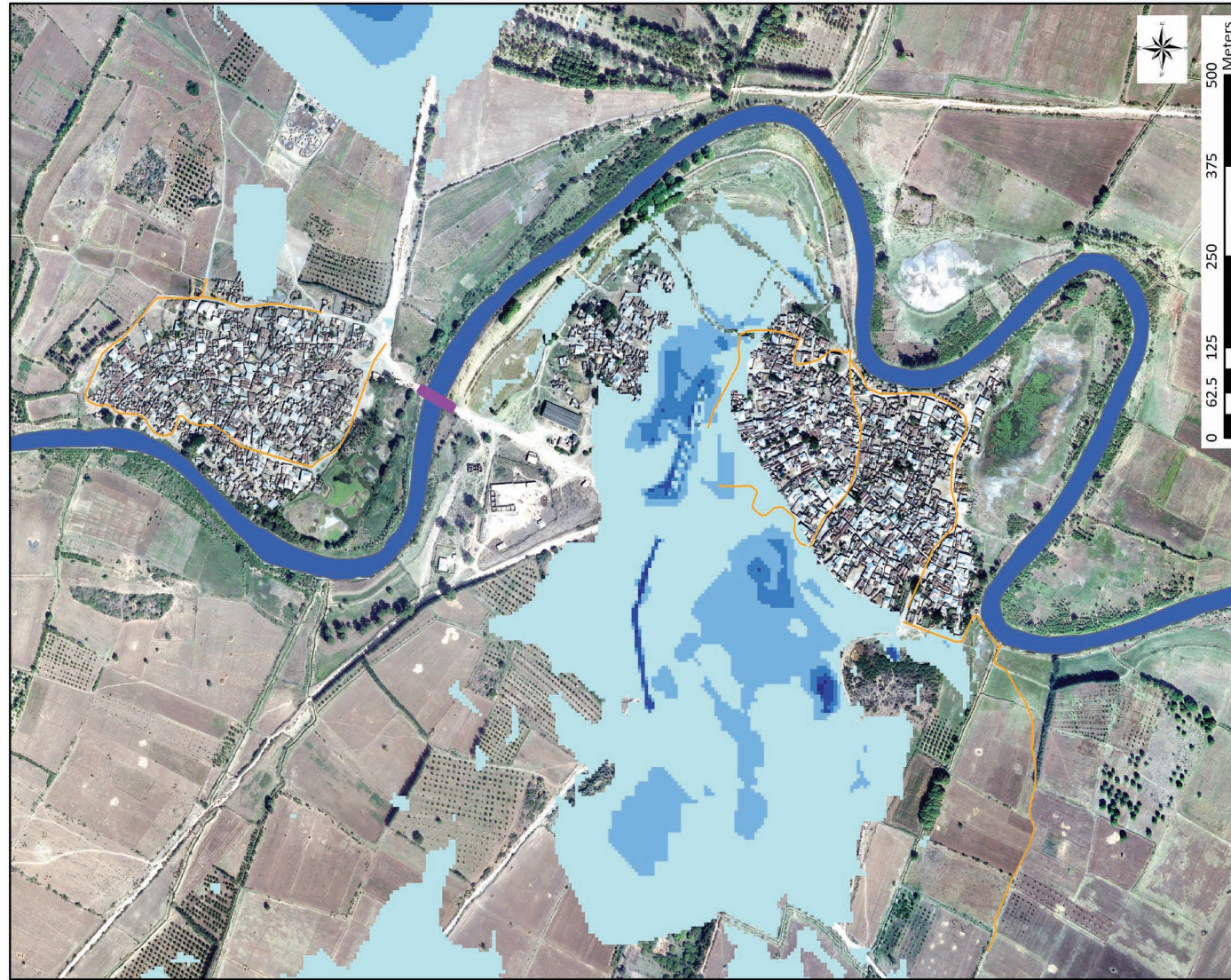
**Kharidadda halista fatahaadda ee Aw Dheegle  
 5 sanaba soo noqota mar**

*The flood risk scenarios (extent and depth) were generated using HEC-RAS hydrodynamic model. Inputs included observed flow data, river cross sections, DTM. For more information contact SWALIM (enquiries@fooswalim.org)*



**Flood risk map for Aw Dheegle - 20 year return period**

**Kharidadda halista fatahaadda ee Aw Dheegle  
 20 sanaba soo noqota mar**

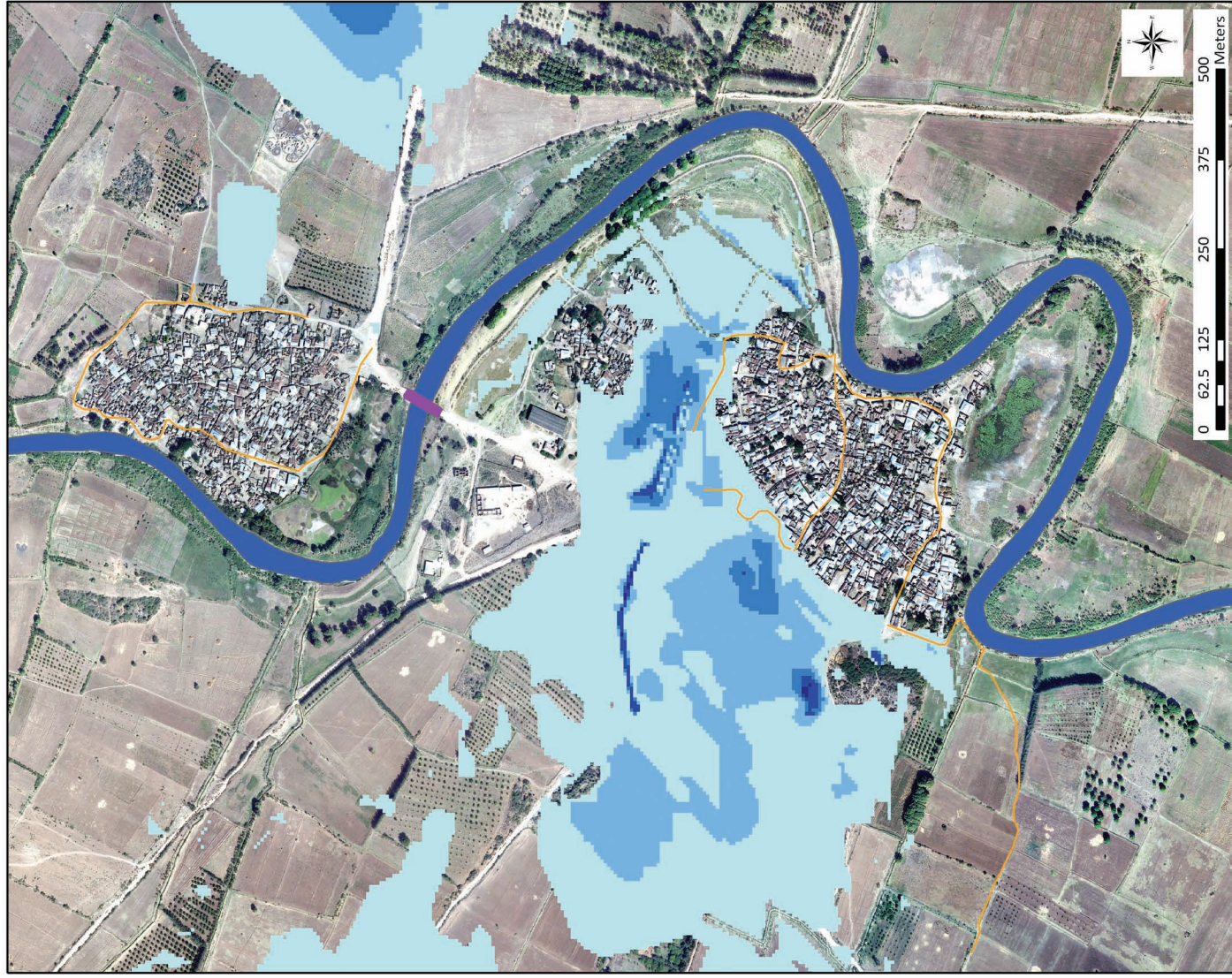




### Flood risk map for Aw Dheegle - 50 year return period

**Kharidadda halista fatahaadda ee Aw Dheegle  
50 sanaba soo noqota mar**

*Dacdooyinka fatahaadeed oo halis ah (baaxad iyo mool) waxaa la soo saray ayadoo la adeegsanayo HEC-RAS qaabka biyosocodka lagu cabiro. Waxa ku jira meesha waa xogta socodka wabiga oo laga cabiray jeexyada guudban, DTM. Haddii aad macluumaad dheeraad ah aad u baahato SWALIM kala soo xiriir (enquiries@faoswalim.org)*



### Flood risk map for Aw Dheegle - 100 year return period

**Kharidadda halista fatahaadda ee Aw Dheegle  
100 sanaba soo noqota mar**

