

### FLOOD WARNING LEVEL

	Last Week	This week	Next Week
Shabelle			
Juba			

### KEY TO WARNING LEVELS

Severe Flooding Possible  
 Moderate Flooding (up to 5 year return period)  
 Minimal/No Flood Risk

During the week that ended on 10th May 2010, the lower parts of the Juba and Shabelle basins within Somalia received heavy rains while the upper parts of the basins received little or no rains. The table below provides more rainfall information on selected stations within the basins.

Station Name	Kismayo	Badade	Luuq	Afmadow	Belet Weyne	Bulo burti	Jowhar
Rainfall (mm)	57.5	105.5	0.0	11.0	1.5	21.5	64.0

Within the same week, the upper catchments of the Juba and Shabelle Rivers in the Ethiopian highlands received moderate rains as indicated in the 7-day cumulative satellite rainfall estimate (RFE) image below.

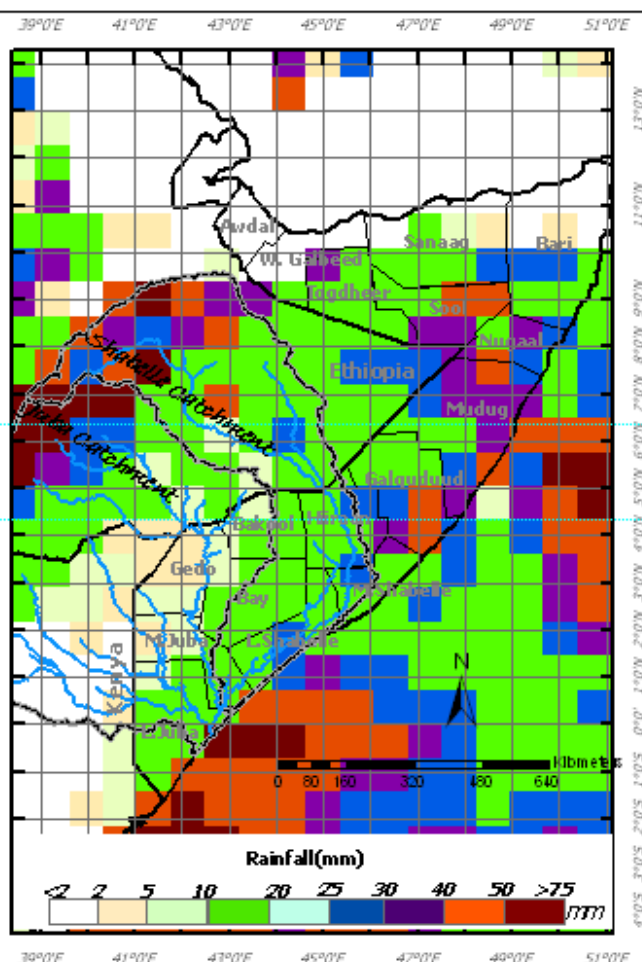
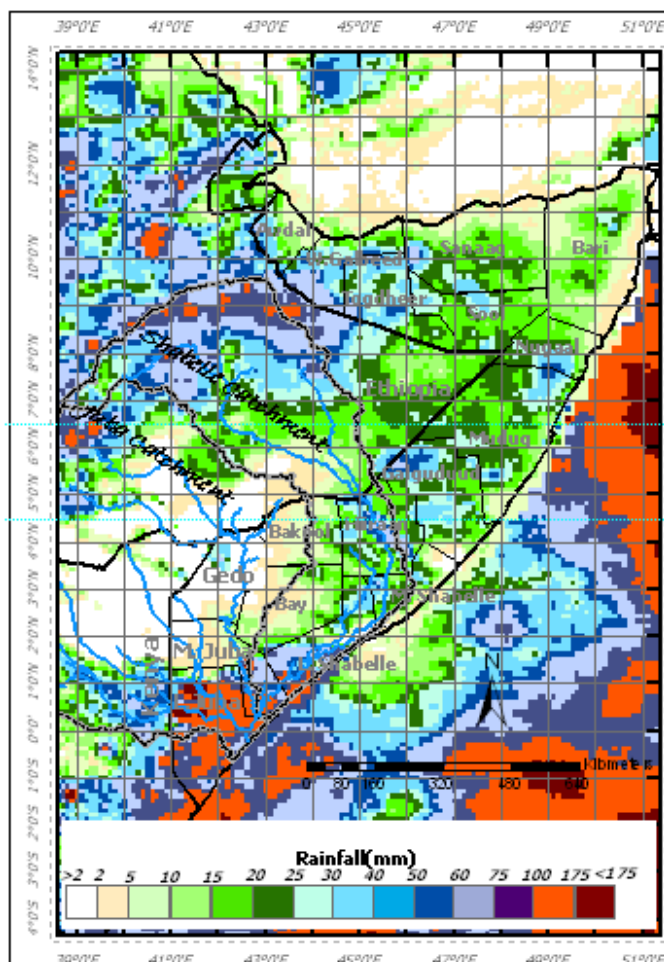
The rainfall forecast for the coming week (11th to 17th May 2010) is calling for moderate rains in Juba and Shabelle catchments both in Ethiopia and Somalia.

Following the heavy rains and consequent high river levels the lower reaches of Shabelle River remains at a high risk of flooding during the coming week.

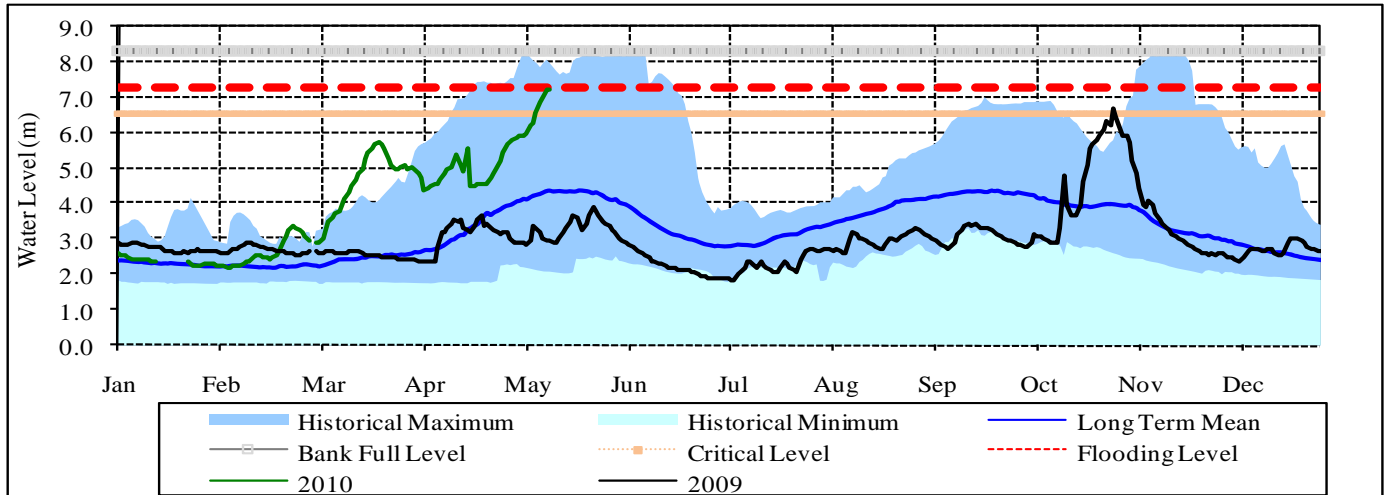
The lower parts of Juba remain at moderate risk of flooding during the forecast period.

Total RFE: Week ending 10/05/2010

7-Day Rainfall Forecast: up to 17/05/2010



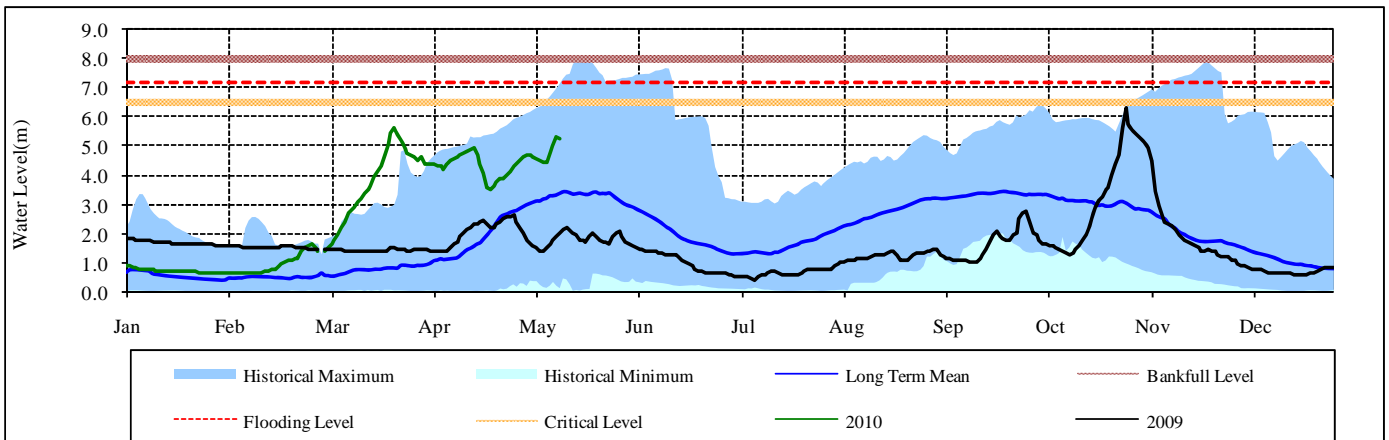
**Belet Weyne**



Date	Current river level	Relative position of current river level from:			
		Previous day	Low Flood Risk	Moderate Flood Risk	High Flood Risk
11/05/2010	7.22	0.02	-1.32	-0.72	0.08
10/05/2010	7.20	0.20	-1.30	-0.70	0.10
09/05/2010	7.00	2.50	-1.10	-0.50	0.30

Observed river levels at Belet Weyne continued to increase over last week and passed the moderate flood risk level. Today's river level is 7.22 m which is 8 cm below the high risk flood level.

**Bulo Burti**



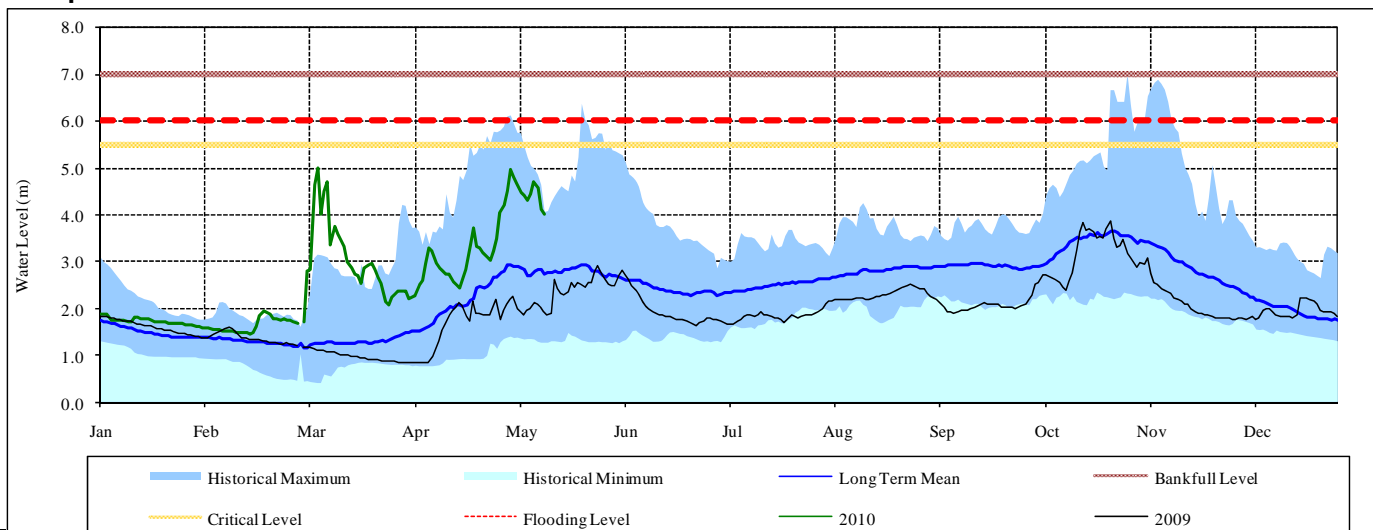
Date	Current river levels	Relative position of current river levels from:			
		Previous day	Low Flood Risk	Moderate Flood Risk	High Flood Risk
11/05/2010	5.22	-0.08	0.78	1.28	1.98
10/05/2010	5.30	0.32	0.70	1.20	1.90
09/05/2010	4.98	0.58	1.02	1.52	2.22

Observed river levels at Bulo Burti continued to increase over last week. Today's river level is 5.22 m which is 1.98 m below the high risk flood level.

**Forecast for coming week for Shabelle**

Due to the presence of rainfall last week in the Shabelle River basin and the foreseen rainfall in the coming week, river levels are expected to increase during the forecast period. There is a high risk of flooding especially in the lower reaches of the river during the forecast period.

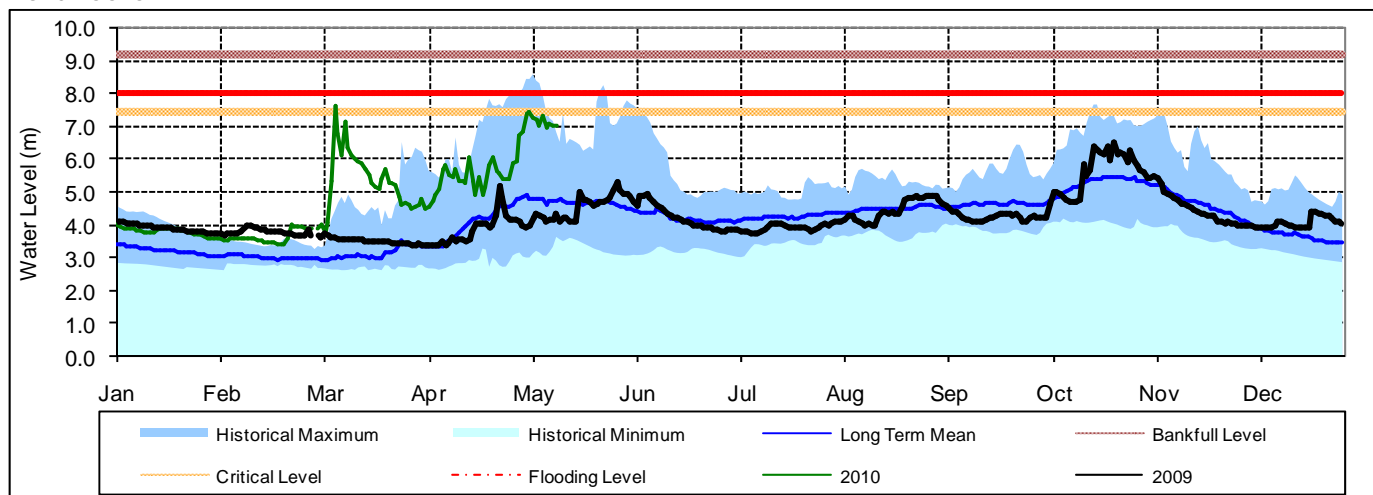
Luuq



Date	Current river levels	Relative position of current river levels from:			
	Levels	Previous day	Low Flood Risk	Moderate Flood Risk	High Flood Risk
11/05/2010	4.55	-0.45	0.65	0.95	1.45
10/05/2010	4.10	-0.10	1.10	1.40	1.90
09/05/2010	4.00	-1.37	1.20	1.50	2.00

Observed river levels at Luuq increased at the beginning of the week with a reduction towards the end. Today's river level is 4.55m which is 1.45 m below the high risk flood level.

Bardheere



Date	Current river levels	Relative position of current river levels from:			
	Levels	Previous day	Low Flood Risk	Moderate Flood Risk	High Flood Risk
11/05/2010	7.00	-0.02	0.02	0.42	1.02
10/05/2010	7.02	-0.04	0.00	0.40	1.00
09/05/2010	7.06	1.75	-0.04	0.36	0.96

Observed river levels at Bardheere fluctuated over the last week. Today's river level is 7.00m which is 1.02 m below the high risk flood level.

Forecast for coming week for Juba

River levels are expected to decrease following the reduction of observed and foreseen rainfall activities within Juba River basin both in the Ethiopian highlands and Somalia. However, the moderate risk of flooding remains especially in the lower reaches of the river.