



## Update on Juba and Shabelle River Levels

Issued: 5 March 2010



SWALIM is funded by The European Commission with co funding provided by UNICEF

### Wet season begins in Somalia

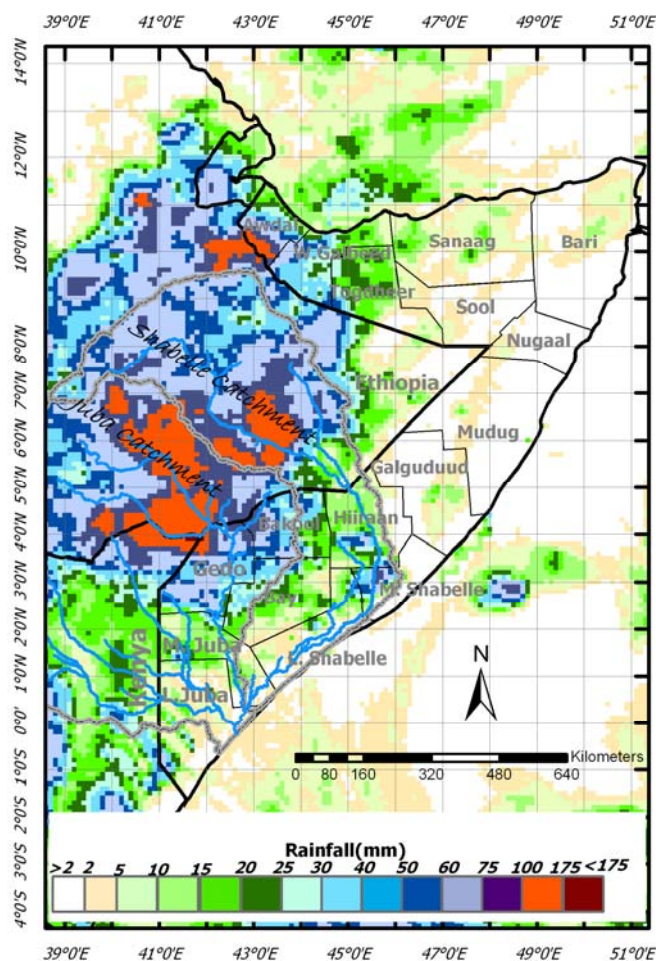
The last one week has seen moderate to heavy rains in the Horn of Africa especially within the Ethiopian highlands and parts of northern Somalia. Other parts in Somalia have received light rains (Figure-1). This could mark a possible early start of the much awaited *Gu* rains.

The rainfall forecast for the coming week (6th - 12th March, 2010) is pointing towards continued moderate rains within the Ethiopian highlands with reduction towards the end of the week and light rains inside Somalia (Figure-2).

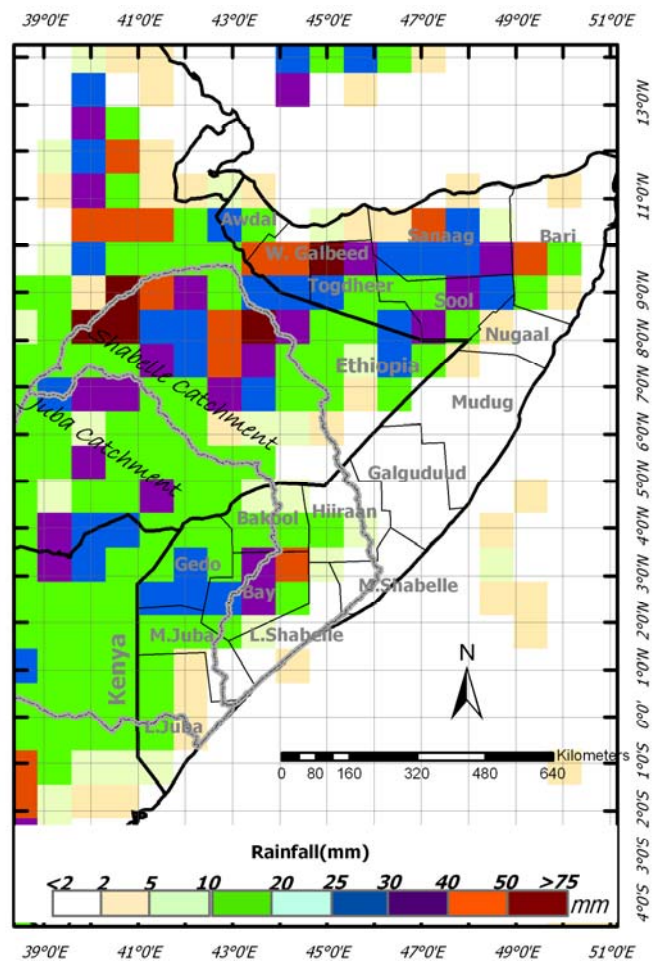
These heavy rains have led to increased river level at Belet Weyne and Luuq on the Shabelle and Juba rivers respectively. Juba river at Luuq has experienced a drastic river level increase over the last three days reaching 5.38m which is 12 cm below the critical flooding level. This will translate into high levels in the downstream reaches with the flood wave diminishing towards the end of this week. At Belet Weyne the current river level is within historical average for this time of the year.

There is no risk of flooding foreseen unless in areas with unclosed river breakages.

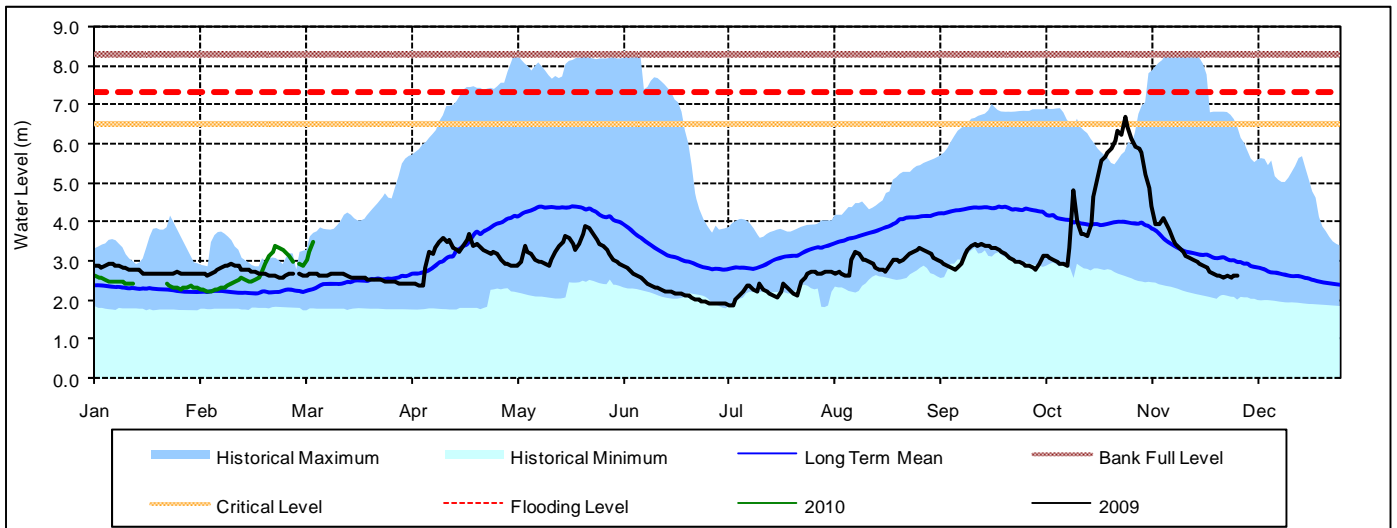
**Figure 1: Total RFE- week ending 04/03/10**



**Figure 2: 7-Day Rainfall Forecast:- week ending 12/03/10**



**Observed river levels for Shabelle at Belet Weyne**



**Observed river levels for Juba at Luuq**

