

Flood Watch Somalia

Issued 17 November, 2009



FLOOD WARNING LEVEL

	Last Week	This week	Next Week
Shabelle			
Juba			

KEY TO WARNING LEVELS

- Severe Flooding Possible
- Moderate Flooding (up to 5 year return period)
- Minimal/No Flood Risk

During the week ending on 16th November, 2009 no rains were reported in the Juba and Shabelle catchment within Somalia; see table below for information on selected stations.

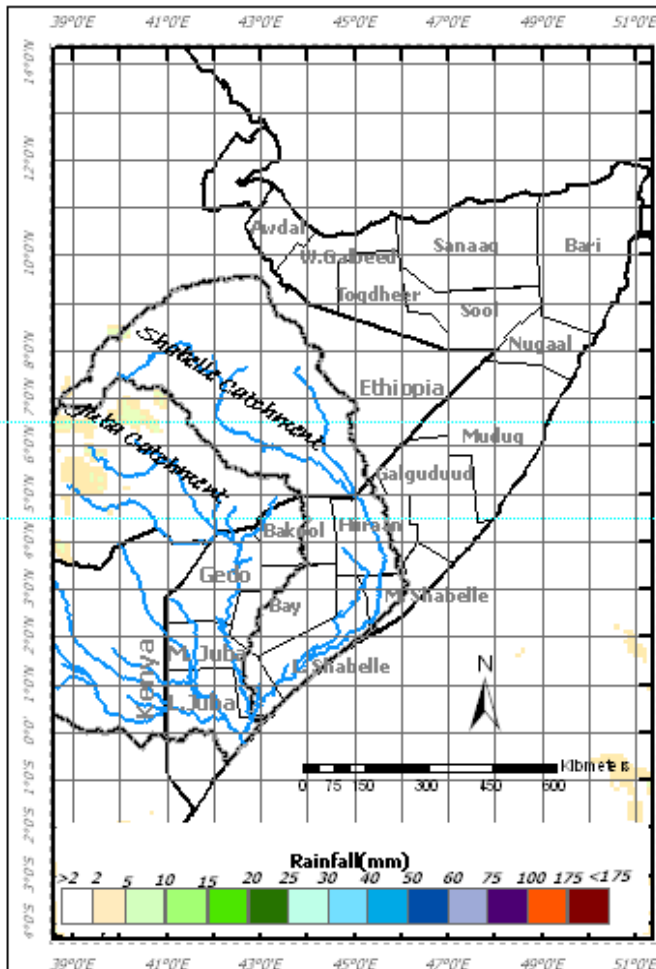
Station Name	Belet Weyne	Marere	Bulo burti	Dobley	Bardera	Afmadow	Jowhar
Rainfall (mm)	0.0	0.0	0.0	0.0	0.0	0.0	0.0

Within the same week, the upper catchments of the Juba and Shabelle rivers in Ethiopia did not receive any rains as indicated in the 7-day cumulative satellite rainfall estimate (RFE) image below.

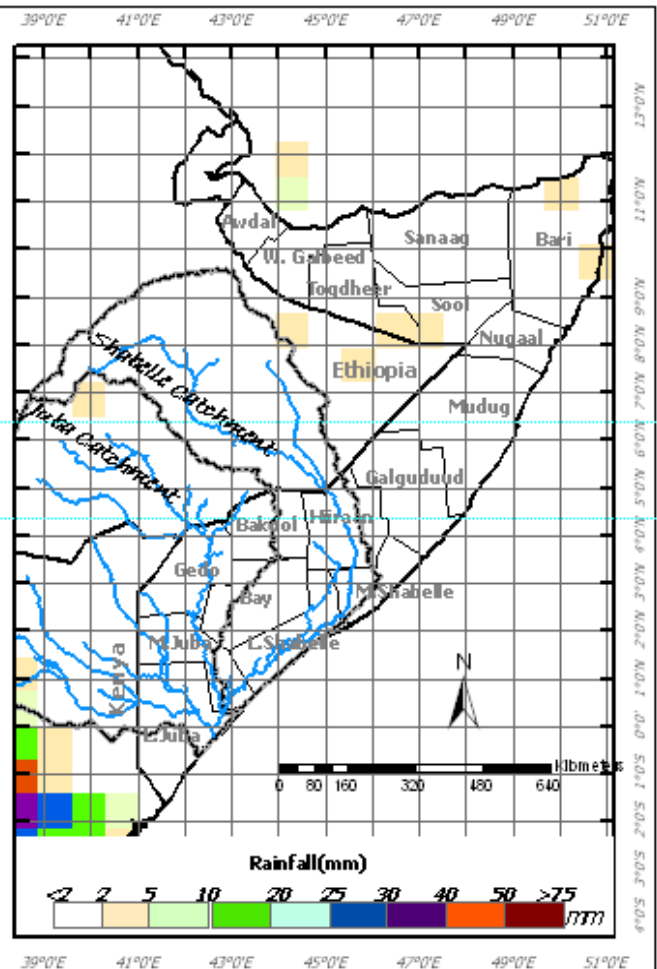
The rainfall forecast for the next seven days (17th to 23rd November, 2009) is pointing towards no rains within the Juba and Shabelle catchments both in Ethiopia and Somalia.

Given the rainfall forecast and the prevailing situation of the decreasing river levels, there is no risk of flooding on the Juba and Shabelle during the forecast period.

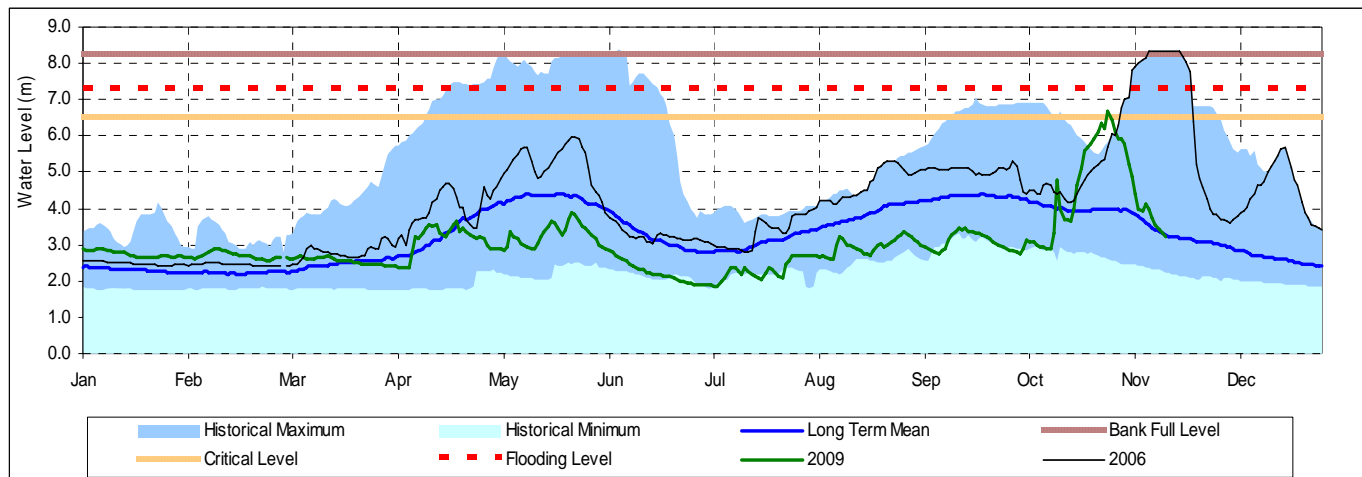
Total RFE: week ending 16/11/09



7-Day Rainfall Forecast: week ending 23/11/09



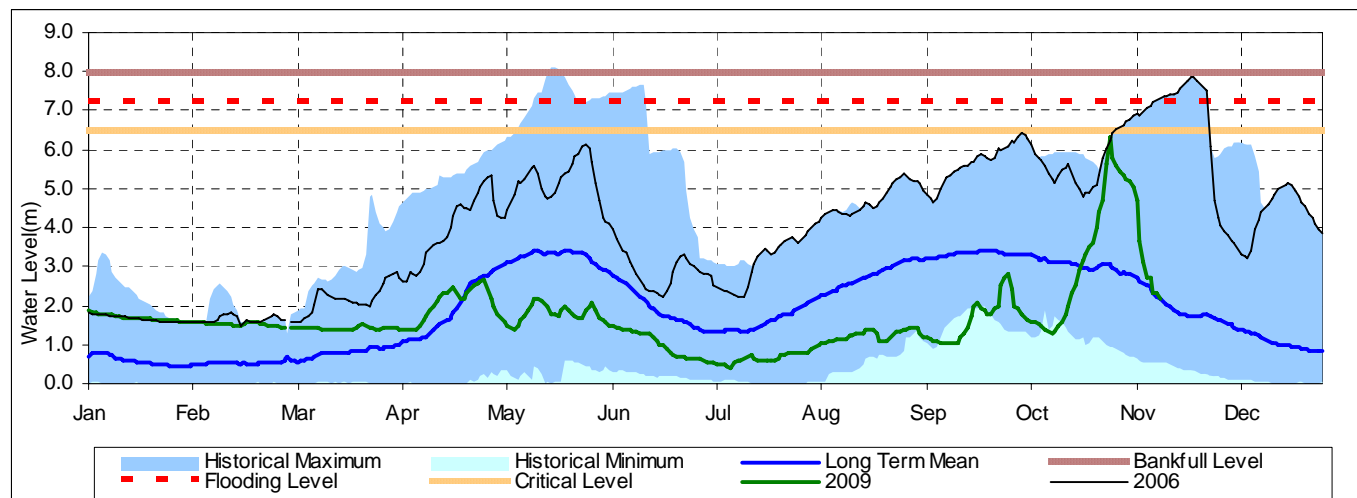
Belet Weyne



Date	Current river level	Relative position of current river level from:			
		Previous day	Low Flood Risk	Moderate Flood Risk	High Flood Risk
17/11/2009	3.20	-0.04	2.70	3.30	4.10
16/11/2009	3.24	-0.06	2.66	3.26	4.06
15/11/2009	3.30	3.30	2.60	3.20	4.00

Observed river levels at Belet Weyne continued to decrease during the last week. Today's river level is 3.30m which is 4.00m below the high risk flood level.

Bulo Burti



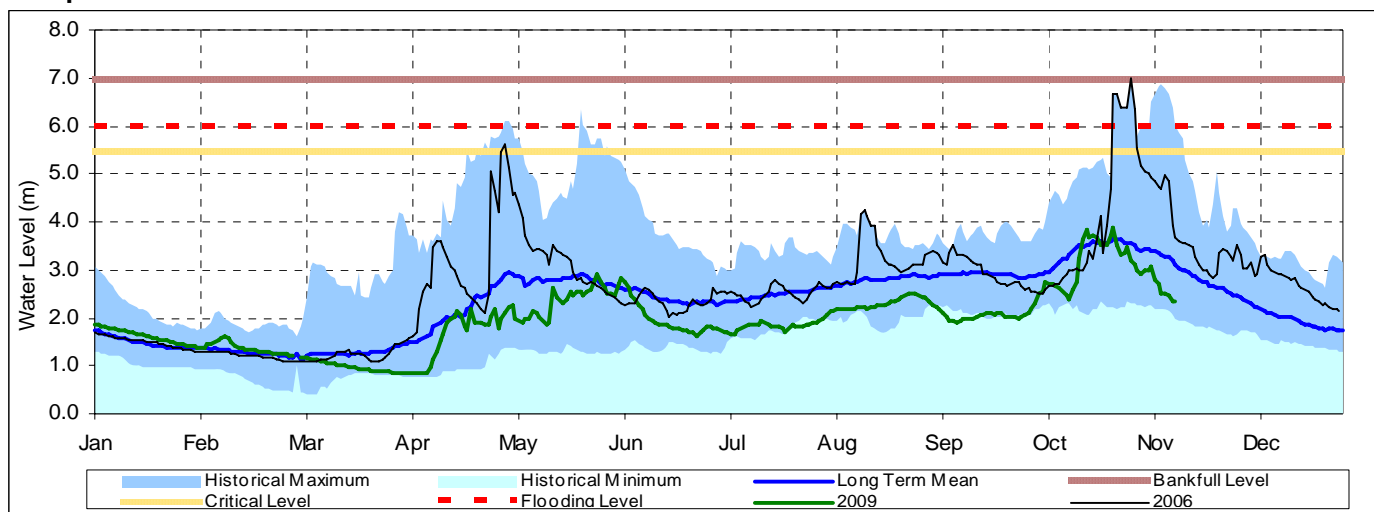
Date	Current river levels	Relative position of current river levels from:			
		Previous day	Low Flood Risk	Moderate Flood Risk	High Flood Risk
17/11/2009	2.00	-0.20	4.00	4.50	5.20
16/11/2009	2.20	-0.20	3.80	4.30	5.00
15/11/2009	2.40	2.40	3.60	4.10	4.80

Observed river levels at Bulo Burti decreased drastically over the last week. Today's river level is 2.00m which is 5.00m below the high flood risk level.

Forecast for coming week for Shabelle

Given the rainfall forecast for the coming week of reduced rainfall activities within Somalia and the Ethiopian highlands, the river levels are expected to stabilise during the forecast period with no risk of flooding.

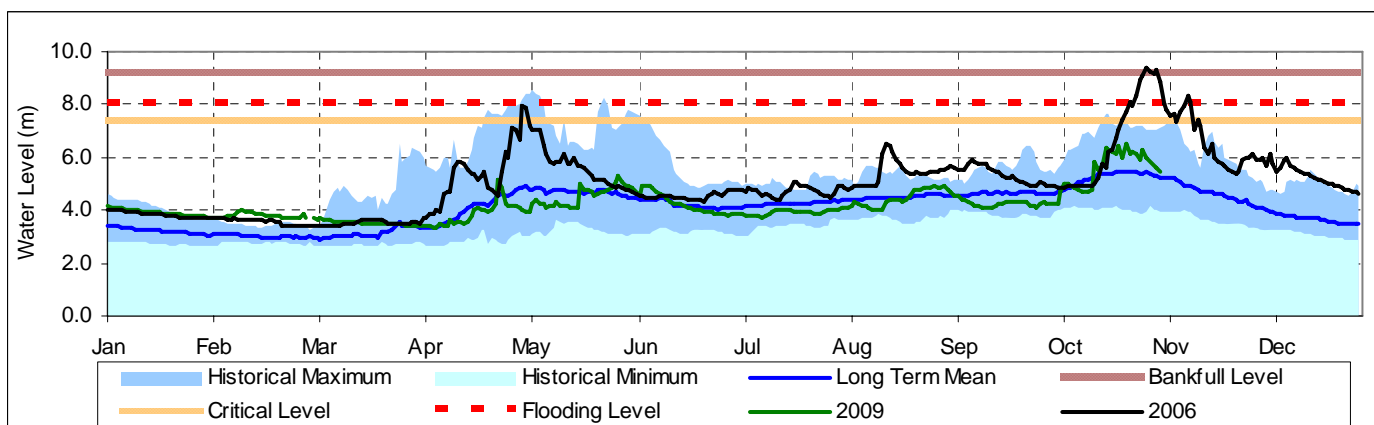
Luuq



Date	Current river levels	Relative position of current river levels from:			
	Levels	Previous day	Low Flood Risk	Moderate Flood Risk	High Flood Risk
17/11/2009	2.34	0.02	2.86	3.16	3.66
16/11/2009	2.36	0.12	2.84	3.14	3.64
15/11/2009	2.48	0.16	2.72	3.02	3.52

Observed river levels at Luuq decreased over the last week and are currently below their historical average. Today's river level is 2.30m which is 3.70m below the high risk flood level.

Bardheere



Date	Current river levels	Relative position of current river levels from:			
	Levels	Previous day	Low Flood Risk	Moderate Flood Risk	High Flood Risk
09/11/2009	4.94	-0.09	2.08	2.48	3.08
08/11/2009	5.03	-0.20	1.99	2.39	2.99
07/11/2009	5.23	5.23	1.79	2.19	2.79

Observed river levels at Bardheere decreased over the last week. Today's river level is 4.50m which is 3.52m below the high risk flood level.

Forecast for coming week for Juba

Given the rainfall forecast for the coming week of reduced rainfall activities within Somalia and the Ethiopian highlands, the river levels are expected to stabilise during the forecast period with no risk of flooding.