

FLOOD WARNING LEVEL

	Last Week	This week	Next Week
Shabelle			
Juba			

KEY TO WARNING LEVELS

- Severe Flooding Possible
- Moderate Flooding (up to 5 year return period)
- Minimal/No Flood Risk

During the week ending on 7th December 2009 moderate rains were reported in some locations within the Juba and Shabelle catchments in Somalia; see table below for information on selected stations.

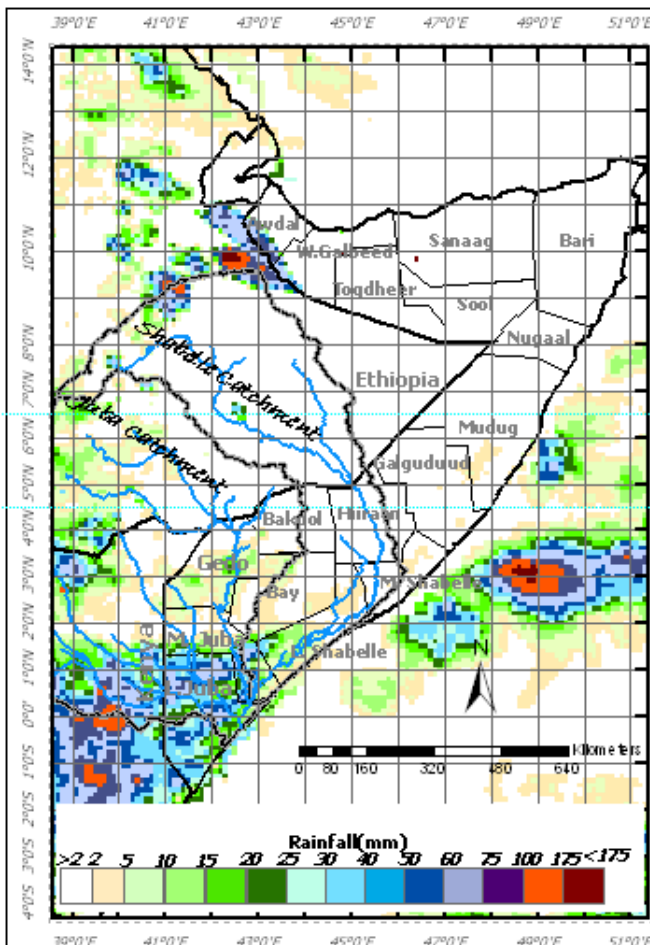
Station Name	Belet Weyne	Marere	Bulo burti	Kismayo	Bardera	Badade	Jowhar
Rainfall (mm)	0.0	30.0	0.0	14.0	0.0	30.0	8.0

Within the same week, the upper catchments of the Juba and Shabelle rivers in the Ethiopian highlands received light rains as indicated in the 7-day cumulative satellite rainfall estimate (RFE) image below.

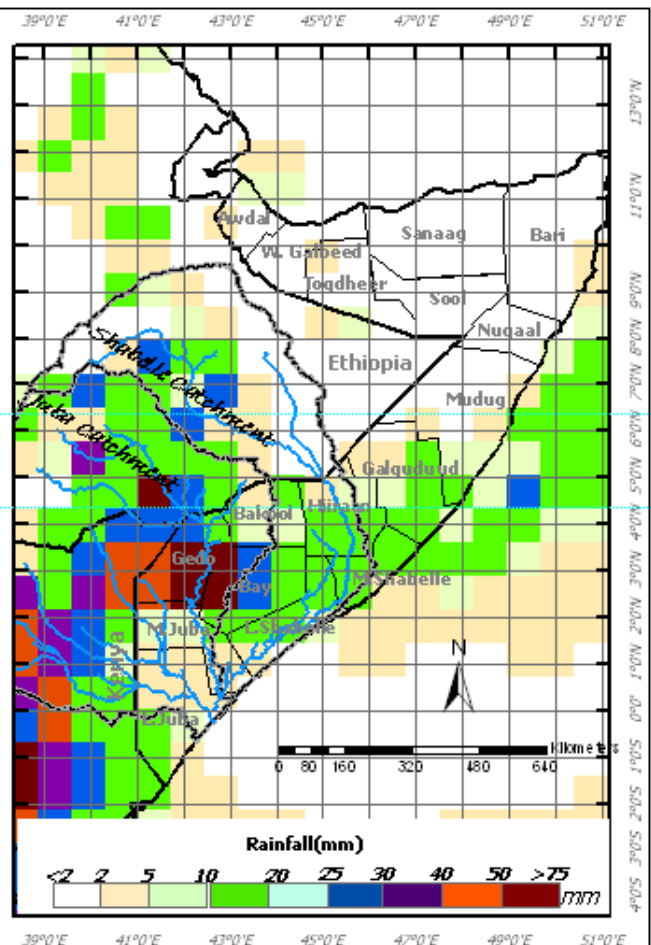
The rainfall forecast for the next seven days (8 to 14 December 2009) is pointing towards moderate rains in the upper reaches of the Juba and Shabelle rivers in Somalia, and light to moderate rains in the lower reaches of the two rivers within Somalia.

There is therefore no risk of flooding along the Juba and Shabelle during the forecast period.

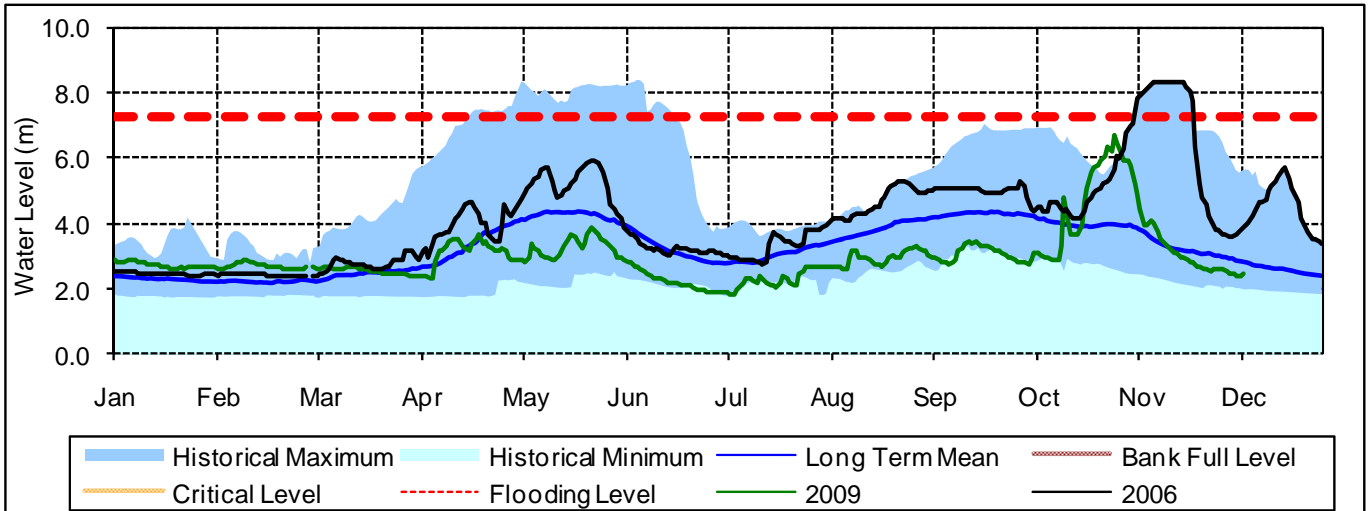
Total RFE: week ending 07/12/09



7-Day Rainfall Forecast: week ending 14/12/09



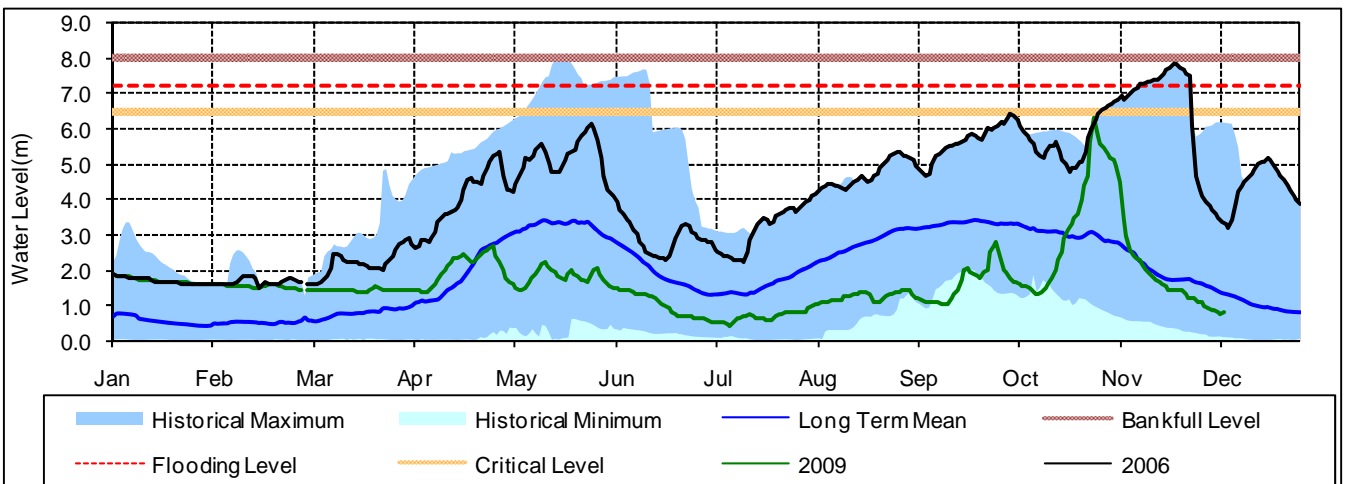
Belet Weyne



Date	Current river level	Relative position of current river level from:			
		Previous day	Low Flood Risk	Moderate Flood Risk	High Flood Risk
08/12/2009	2.5	0.07	3.45	4.05	4.85
07/12/2009	2.4	-0.04	3.52	4.12	4.92
06/12/2009	2.4	-0.18	3.48	4.08	4.88

Observed river levels at Belet Weyne remained low during the last week. Today's river level is 2.50m which is 4.85m below the high risk flood level.

Bulo Burti



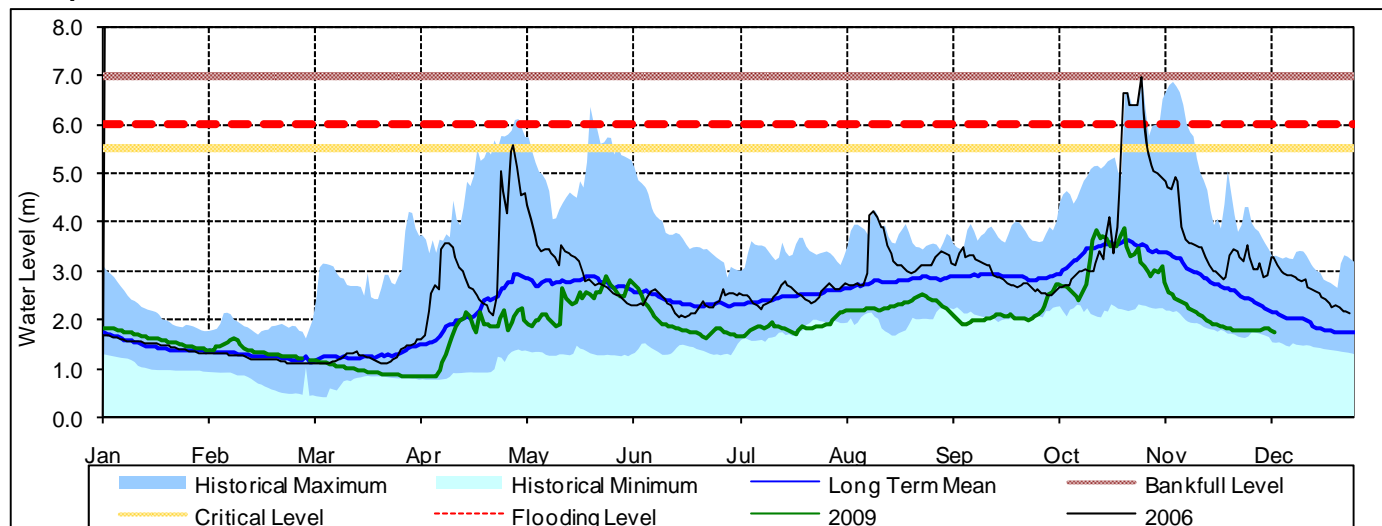
Date	Current river levels	Relative position of current river levels from:			
		Previous day	Low Flood Risk	Moderate Flood Risk	High Flood Risk
08/12/2009	0.80	0.04	5.20	5.70	6.40
07/12/2009	0.76	-0.04	5.24	5.74	6.44
06/12/2009	0.80	-0.40	5.20	5.70	6.40

Observed river levels at Bulo Burti continued to decrease in the last week. Today's river level is 0.80m which is 6.40m below the high flood risk level.

Forecast for coming week for Shabelle

River levels along the Shabelle River have remained below their long term mean for the past four weeks raising concerns for water availability during the Jilal season which is expected to start in January. There is no risk of flooding foreseen during the forecast period.

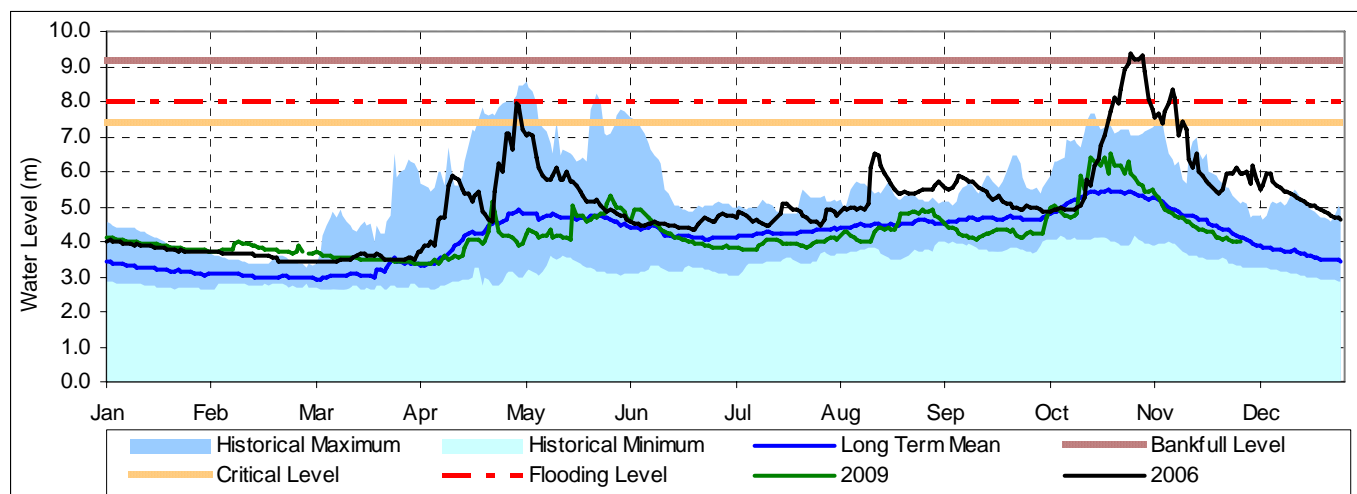
Luuq



Date	Current river levels	Relative position of current river levels from:			
	Levels	Previous day	Low Flood Risk	Moderate Flood Risk	High Flood Risk
08/12/2009	1.76	0.02	3.44	3.74	4.24
07/12/2009	1.78	0.04	3.42	3.72	4.22
06/12/2009	1.82	-0.03	3.38	3.68	4.18

Observed river levels at Luuq remained stable over the last week and are currently below their historical average. Today's river level is 1.76m which is 4.24m below the high risk flood level.

Bardheere



Date	Current river levels	Relative position of current river levels from:			
	Levels	Previous day	Low Flood Risk	Moderate Flood Risk	High Flood Risk
01/12/2009	4.02	0.02	3.00	3.40	4.00
30/11/2009	4.00	-0.02	3.02	3.42	4.02
29/11/2009	4.02	-0.03	3.00	3.40	4.00

Observed river levels at Bardheere remained slightly lower than the long term mean over the last week. Today's river level is 4.02m which is 4.00m below the high risk flood level.

Forecast for coming week for Juba

The forecasted rains in the Juba catchment are likely to cause slight increase in the river level over the coming week especially in the lower reaches of the river. There is no risk of flooding during the coming week for the Juba river.