

Flood Extent 2006

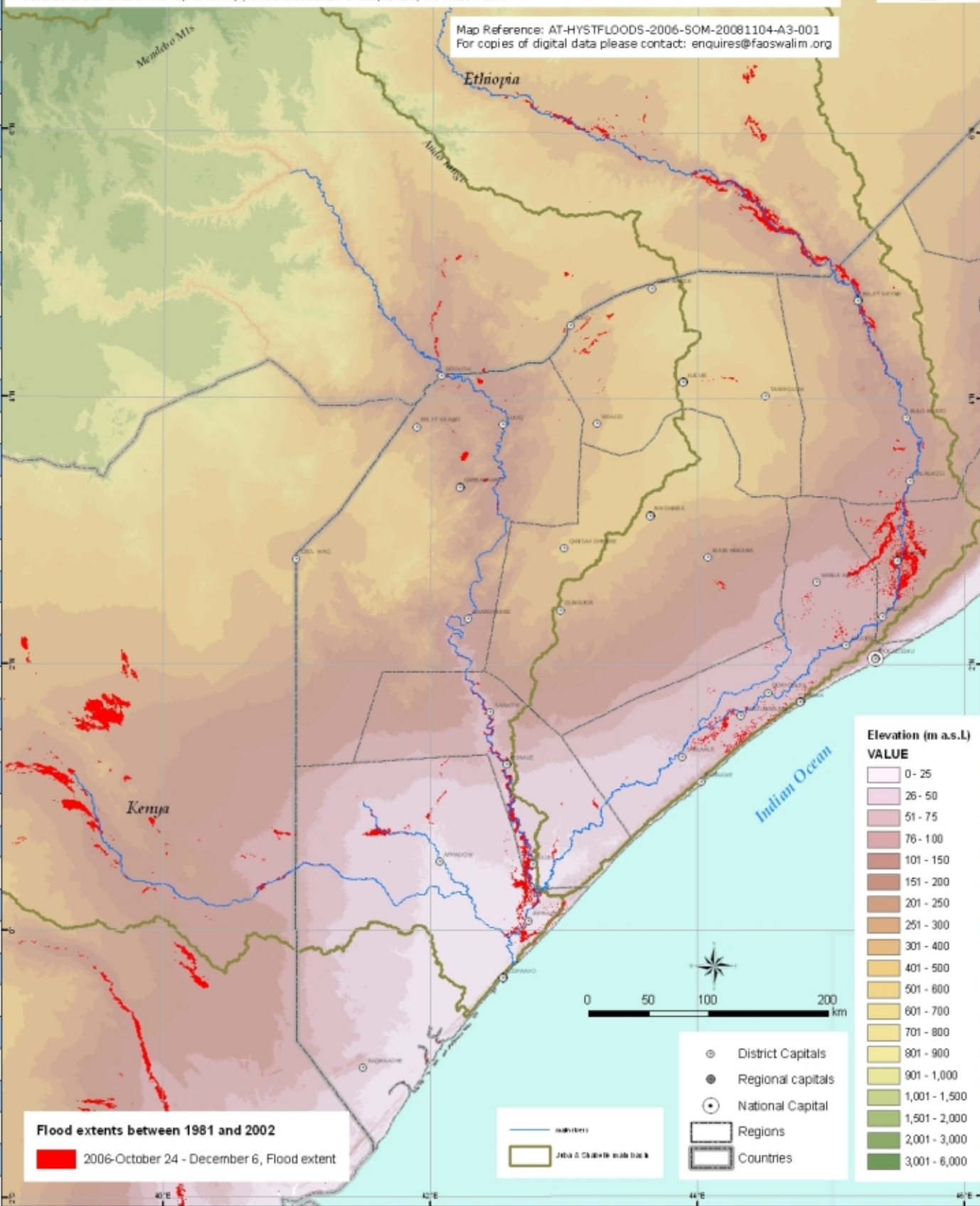
Data on Drainage network of Juba and Shabelle has been derived from the 30m resolution Digital Elevation Model (NASA SRTM).
 Data on topography from NASA-SRTM, 2000 (90 m resolution)

Data on 2006 Flood extent: This dataset contains flood polygons as identified by UNOSAT, Dartmouth Flood Observatory and the US Humanitarian Information Unit (HIU). The flood polygons have been identified using a wide variety of satellites including MODIS, SPOT, Radarsat, Envisat and DMC. The flood polygons have been processed and supplied by UNOSAT, Dartmouth Flood Observatory and the US Humanitarian Information Unit (HIU). Imagery (excluding MODIS) has been acquired under the International Charter for Space and Major Disasters which was triggered during the Somalia floods in Nov 2006. The flood polygons (from the various sources) have been combined into one layer by Food & Agriculture Organisation (FAO) - Somalia Water & Land Information Management (SWALIM)

Produced by: The Somalia Water and Land Information Management Project (SWALIM)
 SWALIM is funded by the European Commission with additional contribution from UNICEF
 The boundaries and names on this map do not imply official Endorsement or acceptance by the United Nations



Map Reference: AT-HYSTFLOODS-2006-SOM-20081104-A3-001
 For copies of digital data please contact: enquires@faoswalim.org



Flood extents between 1981 and 2002
■ 2006-October 24 - December 6, Flood extent

Elevation (m a.s.l.)	
Color	VALUE
Lightest pink	0 - 25
Light pink	26 - 50
Light red	51 - 75
Red	76 - 100
Dark red	101 - 150
Brownish red	151 - 200
Brown	201 - 250
Dark brown	251 - 300
Orange-brown	301 - 400
Orange	401 - 500
Yellow-orange	501 - 600
Yellow	601 - 700
Light yellow	701 - 800
Yellow-green	801 - 900
Light green	901 - 1,000
Green	1,001 - 1,500
Dark green	1,501 - 2,000
Very dark green	2,001 - 3,000
Black-green	3,001 - 6,000

- District Capitals
- Regional capitals
- National Capital
- ▭ Regions
- ▭ Countries

— Drainage network
 — Juba & Shabelle main lines

