



# Somalia Flood Watch

Issued: 13<sup>th</sup> December, 2011



## FLOOD WARNING LEVEL

	Last Week	This week	Next Week
Shabelle			
Juba			

## KEY TO WARNING LEVELS

Severe Flooding Possible  
 Moderate Flooding (up to 5 year return period)  
 Minimal/No Flood Risk

During the week ending 12<sup>th</sup> December, 2011 there was a significant reduction of rainfall activities in most parts of Somalia. Only Jamame rainfall station in Lower Juba recorded moderate amounts of rainfall (see table below).

Station Name	Bardheere	Jamame	Buulle	Lugh	Belet Weyne	Bulo burti	Jowhar
Rainfall (mm)	0.0	60.0	0.0	0.0	0.0	0.0	0.0

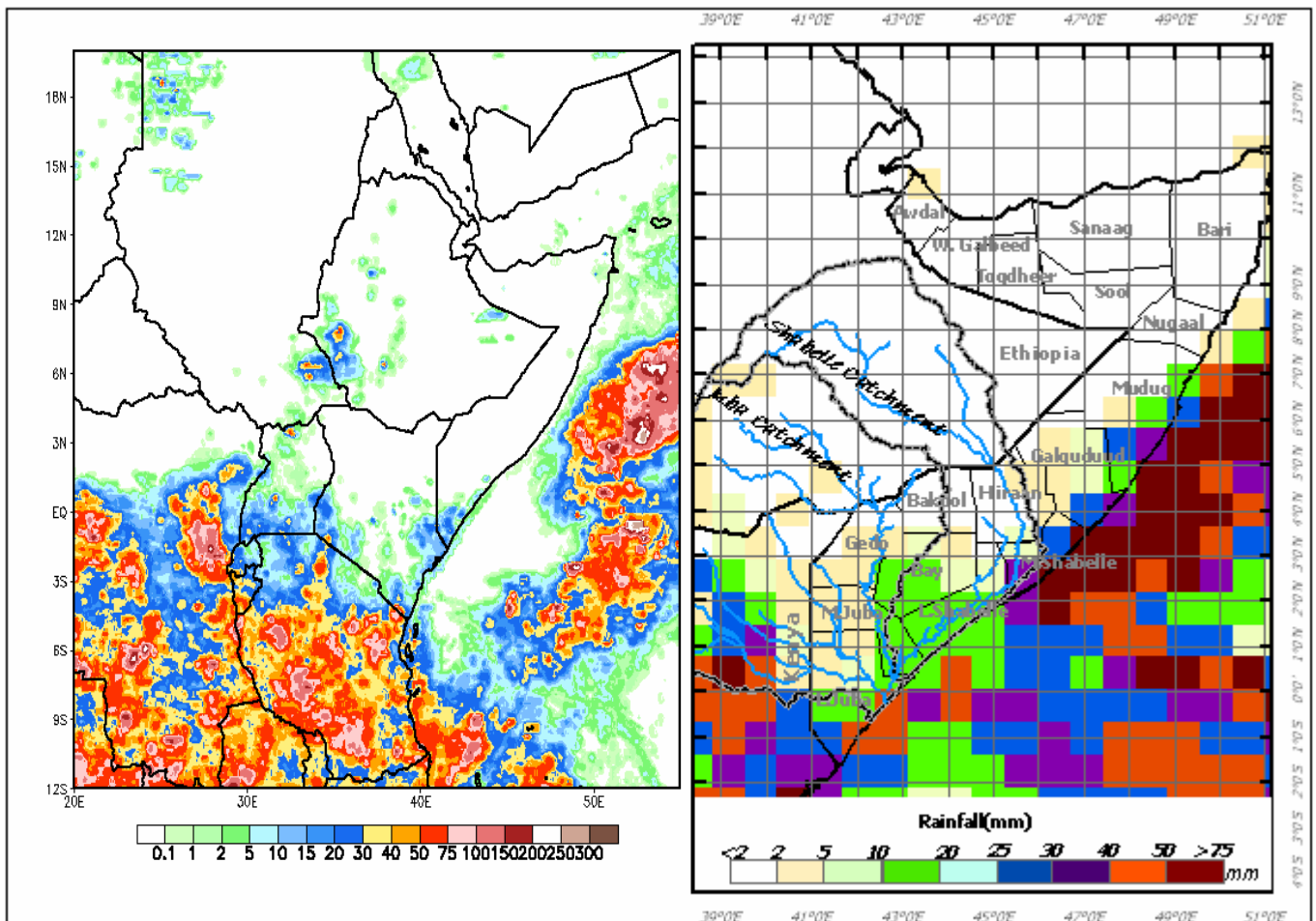
The 7-day cumulative satellite Rainfall Estimate (RFE) image below indicates that only the southern most areas of Somalia received some rains while the rest remained dry including the Ethiopian highlands.

The rainfall forecast for the coming week is pointing towards light or no rains within the Juba and Shabelle River basins both in Ethiopia and Somalia. The southern Somalia coastline is expected to receive moderate rains within the forecast period.

Given the rainfall forecast and the prevailing low river levels on the Juba and Shabelle Rivers, there is minimal or no risk of flooding along the two rivers in the coming week.

Total RFE: Week ending 12/12/2011

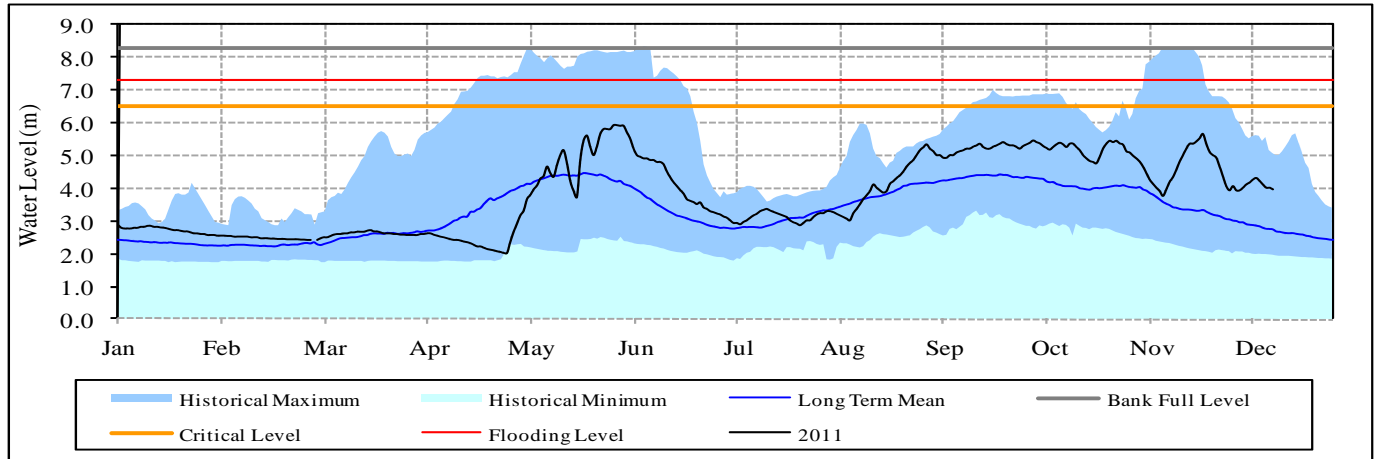
7-Day Rainfall Forecast: up to 19/12/2011



This bulletin is produced by the FAO Somalia Water and Land Information Management (SWALIM) Project, in collaboration with USGS and, FEWS NET Somalia. For more information send an e-mail to [SO-Hydro@fao.org](mailto:SO-Hydro@fao.org) or visit <http://www.faoswalim.org>



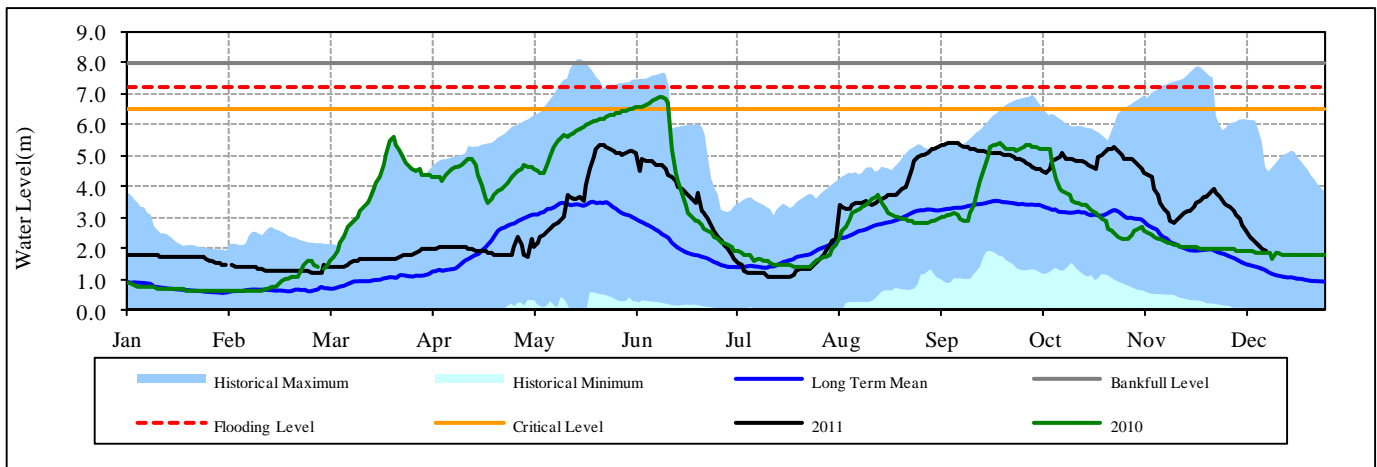
**Belet Weyne**



Date	Current river level	Relative position of current river level from:			
		Previous day	Low Flood Risk	Moderate Flood Risk	High Flood Risk
13/12/2011	3.95	-0.05	1.95	2.55	3.35
12/12/2011	4.00	0.00	1.90	2.50	3.30
11/12/2011	4.00	-0.10	1.90	2.50	3.30

Observed river levels at Belet Weyne decreased over last week. Today’s river level is 3.95m which is 3.35m below the high risk flood level.

**Bulo Burti**



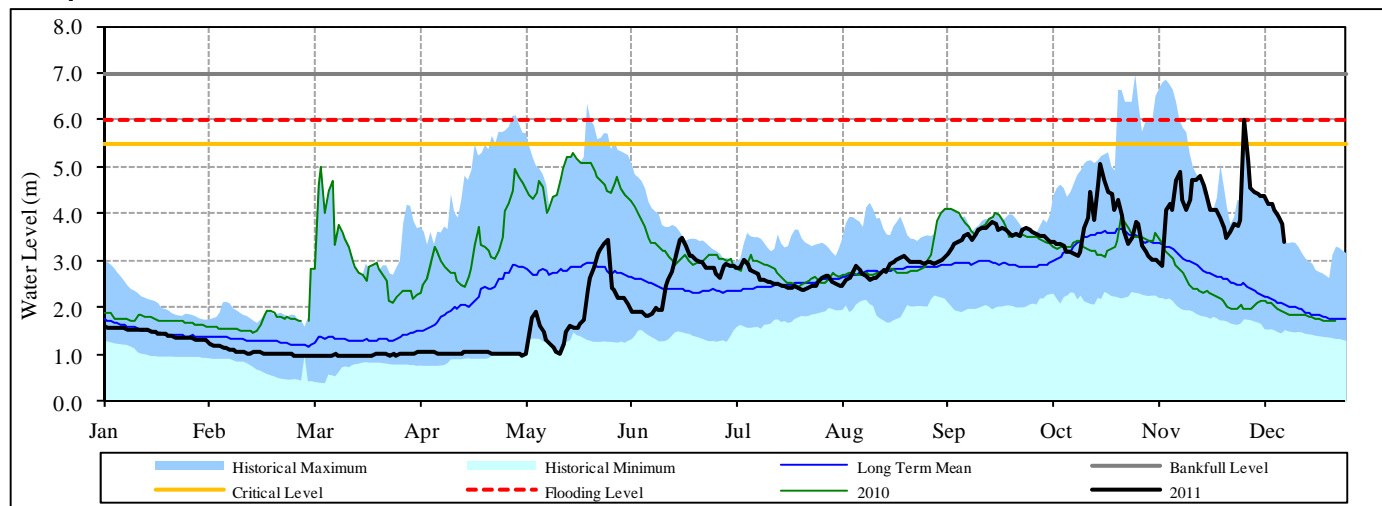
Date	Current river level	Relative position of current river level from:			
		Previous day	Low Flood Risk	Moderate Flood Risk	High Flood Risk
13/12/2011	1.93	-0.03	4.07	4.57	5.27
12/12/2011	1.96	-0.08	4.04	4.54	5.24
11/12/2011	2.04	-0.24	3.96	4.46	5.16

Observed river levels at Bulo Burti station continued to decrease over the last week. Today’s river level is 1.93m which is 5.27m below the high risk flood level.

**Forecast for coming week for Shabelle**

Given the current river levels along the Shabelle and rainfall forecast for coming week, there is no risk of flooding foreseen during the forecast period.

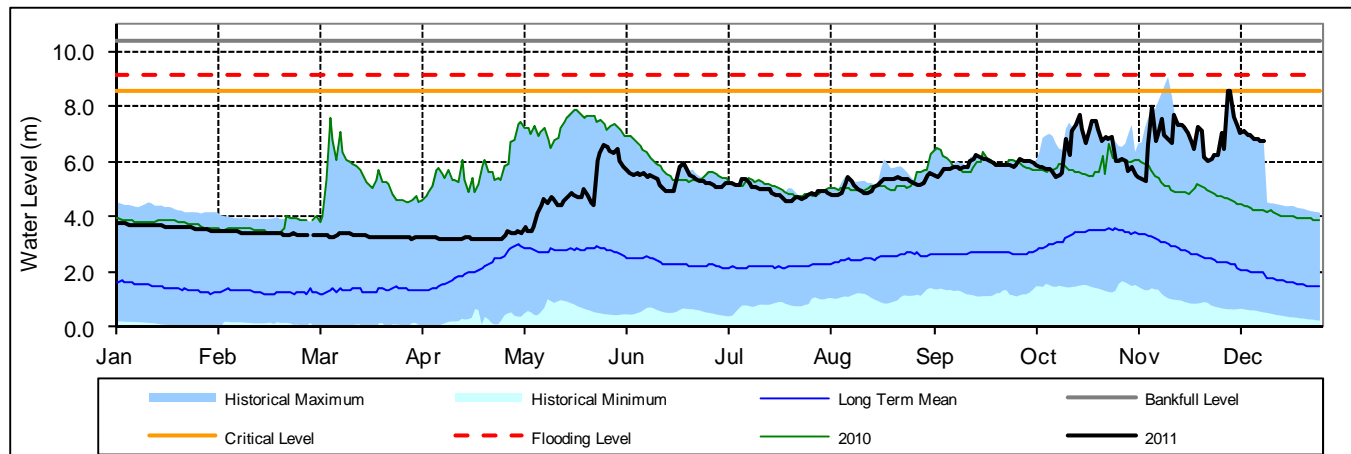
**Luuq**



Date	Current river levels	Relative position of current river levels from:			
	Levels	Previous day	Low Flood Risk	Moderate Flood Risk	High Flood Risk
13/12/2011	3.40	0.40	1.80	2.10	2.60
12/12/2011	3.80	0.13	1.40	1.70	2.20
11/12/2011	3.93	0.17	1.27	1.57	2.07

Observed river levels at Luuq decreased drastically over last week. Today’s river level is 3.40m which is 2.60m below the high risk flood level.

**Bardheere**



Date	Current river levels	Relative position of current river levels from:			
	Levels	Previous day	Low Flood Risk	Moderate Flood Risk	High Flood Risk
13/12/2011	6.76	0.00	1.42	1.82	2.42
12/12/2011	6.76	-0.07	1.42	1.82	2.42
11/12/2011	6.83	-0.04	1.35	1.75	2.35

Observed river levels at Bardheere decreased during the last one week. Today’s river level is 6.76m which is 2.42m below the high risk flood level.

**Forecast for coming week for Juba**

Given the current river levels along the Juba and rainfall forecast for coming week, there is no risk of flooding foreseen during the forecast period.