



# Flash Flood Update

Issued: 5<sup>th</sup> December, 2011



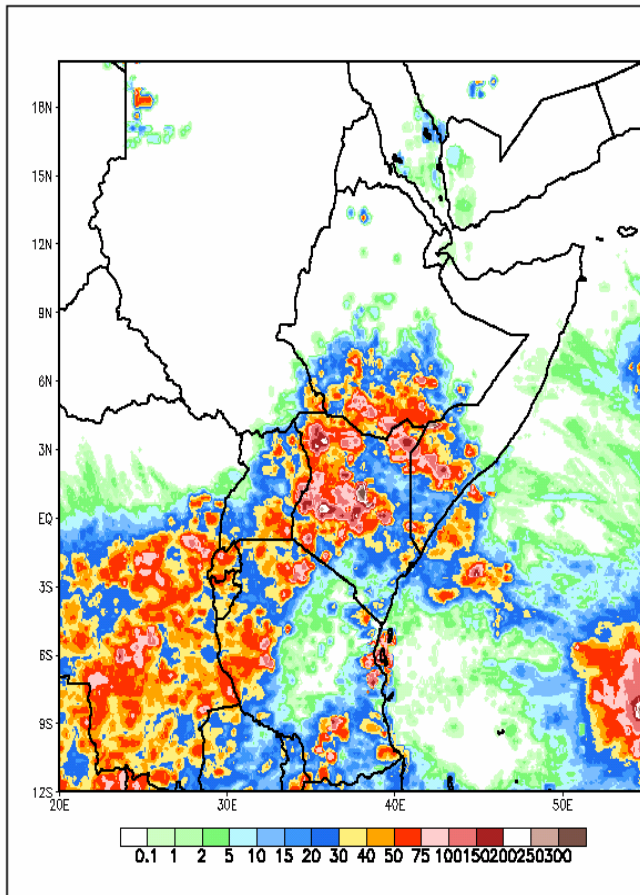
## Flash flood cause havoc in Gedo region in Southern Somalia

The last one week has seen very heavy rains within the Juba River Basin in Southern Somalia and the Ethiopian highlands as seen in map 1 below. Luuq recorded a total of 74mm of rainfall, while Mandera recorded 100mm during the last one week. This has led to massive flash floods in Gedo region resulting in inundation of farmlands and subsequent loss of crops. The heavy rains also led to drastic river level increase reaching 5.90m (40cm above the critical level of flooding) at Luuq. Observed river level at Bardhere on the same day (2nd December) reached 7.90m which is 68cm below the critical level of flooding. The high river levels are being translated progressively into high levels in the downstream reaches of the river with the flood wave being expected to diminish towards the end of the week.

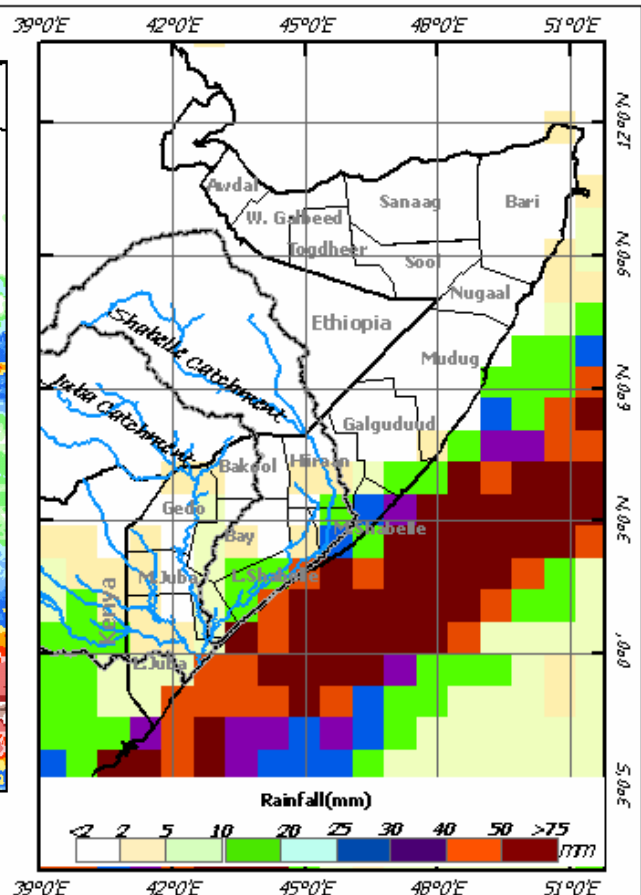
The rainfall forecast for the coming week (5th—11th December) indicates a reduction of rainfall activities within Somalia and the also in the Ethiopian highlands (map 2).

Given the rainfall forecast for coming week, there remains a moderate risk of flooding along the Juba River especially in the lower reaches which may be exacerbated by weak river embankments. There is no risk of flooding foreseen along the Shabelle River.

Map 1: 7-Day Rainfall Estimates: 27th Nov – 3rd Dec 2011



Map 2: 7-Day Rainfall Forecast: 5th – 11th Dec 2011



This bulletin is produced by the FAO Somalia Water and Land Information Management (SWALIM) Project, in collaboration with USGS and, FEWS NET Somalia.

For more information send an e-mail to [SO-Hydro@fao.org](mailto:SO-Hydro@fao.org) or visit <http://www.faoswalim.org>

