

# Somalia Rainfall Forecast

Issued: 13 November 2017

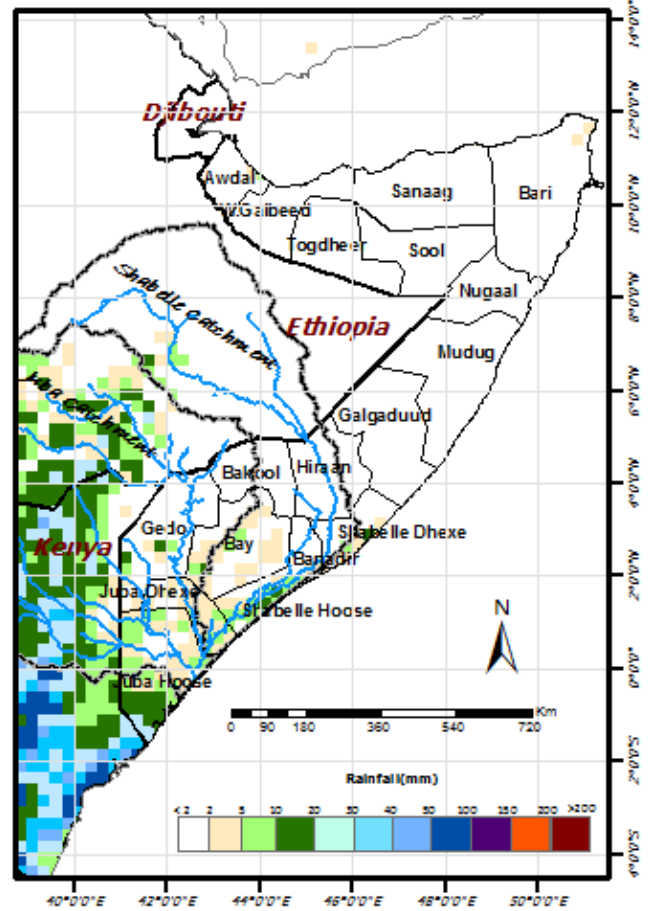
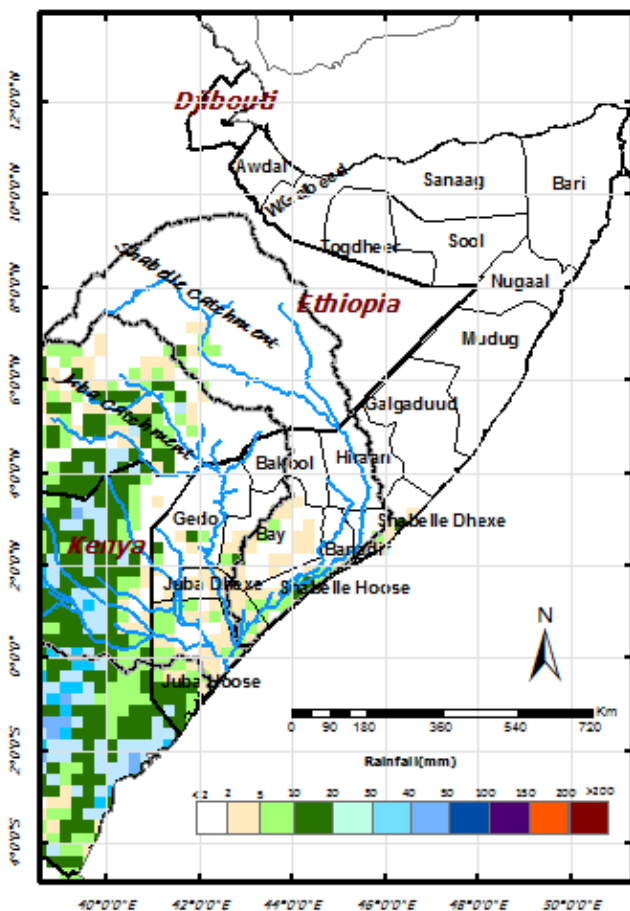
The last 10 days have seen extremely heavy rains in some parts of southern and central regions of Somalia causing flooding and displacements in a few places. Bay region saw the heaviest amounts of rainfall with some station surpassing the annual average rains in a few days.

Rainfall activities are expected to decrease in the coming week given the 3 days and one week rainfall forecasts in Map 1 and Map 2 respectively. There remains a moderate to high risk of flooding in the middle and lower reaches of both Juba and Shabelle rivers where the river levels are currently very high.

Users are advised that this is a forecast and at times there may be discrepancies between forecast and actual amounts of rainfall received. The forecast, observed river levels and rainfall amounts are updated on a daily basis and can be found on this link: <http://systems.fao.org/frims/>

Map 1: 3 days rainfall forecast (13-15 November 2017)

Map 2: 7-day cumulated rainfall forecast (13-19 November 2017)



This update is produced by the: FAO - Somalia Water and Land Information Management—SWALIM. For more information regarding this product please contact [SO-hydro@fao.org](mailto:SO-hydro@fao.org) or visit <http://www.faoswalim.org>

SWALIM Technical Partners

SWALIM Funding Agencies

