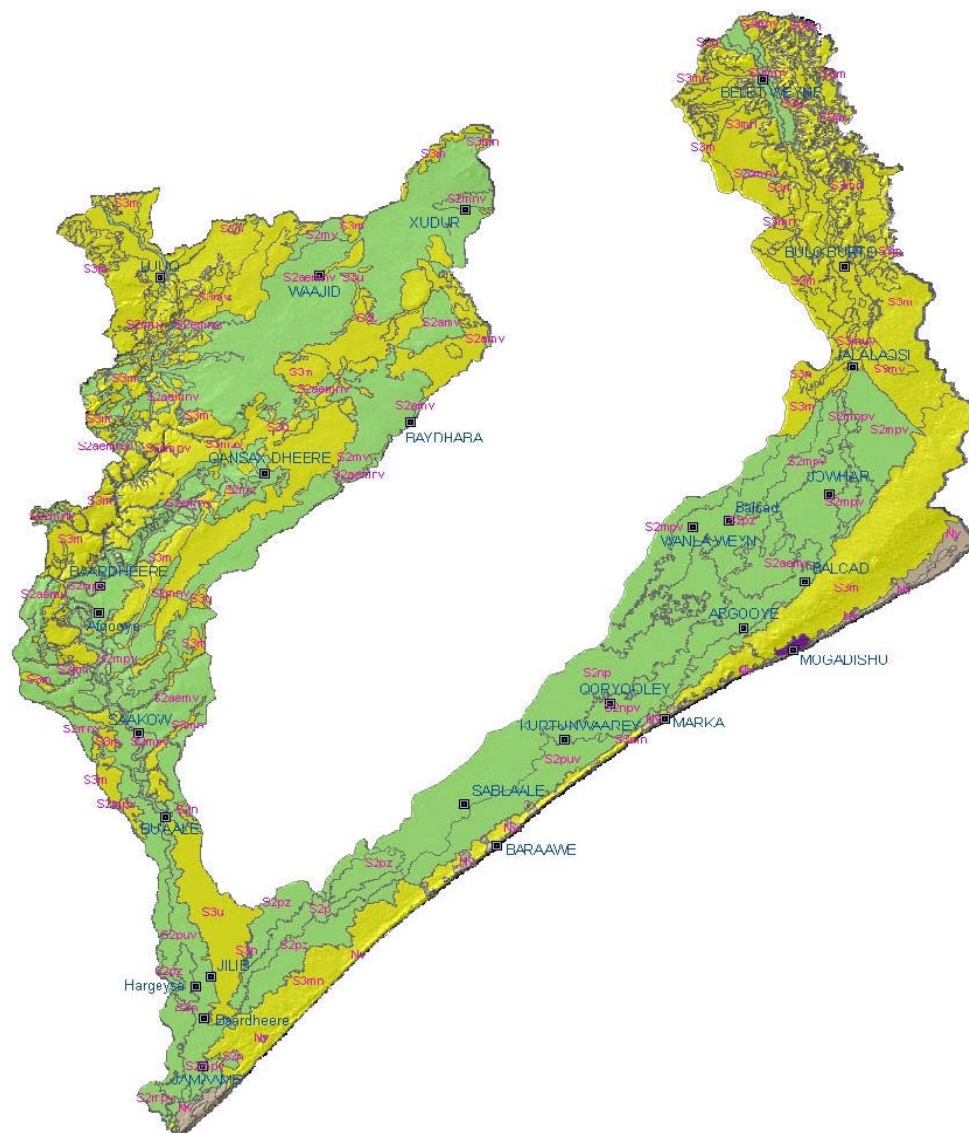




## Land Suitability Assessment of the Juba and Shabelle Riverine Areas in Southern Somalia



Project Report No L-09  
July 2007

Somalia Water and Land Information Management  
Ngecha Road, Lake View. P.O Box 30470-00100, Nairobi, Kenya.  
Tel +254 020 4000300 - Fax +254 020 4000333,  
Email: [enquiries@faoswalim.org](mailto:enquiries@faoswalim.org) Website: <http://www.faoswalim.org>.



The designations employed and the presentation of material in this information product do not imply the expression of any opinion whatsoever on the part of the Food and Agriculture Organization of the United Nations and the SWALIM Project concerning the legal status of any country, territory, city or area of its authorities, or concerning the delimitation of its frontiers or boundaries.

This document should be cited as follows:

Venema, J.H. and Vargas, R., 2007. Land suitability assessment of the Juba and Shabelle riverine areas in Southern Somalia. FAO-SWALIM. Project Report No. L-09. Nairobi, Kenya.

## TABLE OF CONTENTS

### List of Acronyms

### Acknowledgment

<b>1</b>	<b>INTRODUCTION.....</b>	<b>1</b>
<b>2</b>	<b>STUDY AREA.....</b>	<b>1</b>
2.1	Location and delineation .....	1
2.2	Climate .....	2
2.3	Geology/Lithology .....	5
2.4	Landform and Soils .....	6
2.5	Land cover.....	6
2.6	Land Use .....	6
2.6.1	Rainfed Agriculture .....	6
2.6.2	Irrigated Agriculture .....	7
2.6.3	Transhumance Pastoralism .....	8
2.6.4	Wood Collection for Charcoal Burning .....	9
2.7	Population .....	12
<b>3</b>	<b>MATERIALS.....</b>	<b>13</b>
3.1	Land Resources data .....	13
3.1.1	Simplified Soil Grouping for Land Evaluation.....	13
3.1.2	Length of Growing Period (LGP) and rainfall variability .....	13
3.1.3	Temperature classes.....	13
3.1.4	Simplified Landform information for Land Evaluation .....	17
3.1.5	Simplified Landcover information for Land Evaluation .....	18
<b>4</b>	<b>METHODS .....</b>	<b>19</b>
4.1	Somalia Automated Land Evaluation System (SOMALES) .....	19
4.1.1	Objectives and principles of land evaluation .....	19
4.1.2	Resource Base Units .....	21
4.1.3	Land qualities and land characteristics.....	21
4.1.4	Land use types and their requirements .....	21
4.1.5	Matching land qualities with land use requirements .....	26
4.1.6	Land suitability classification .....	27
4.1.7	Verification of preliminary results.....	27
<b>5</b>	<b>RESULTS.....</b>	<b>28</b>
5.1	Land suitability for rainfed agriculture .....	28
5.2	Land suitability for irrigated agriculture .....	34
5.3	Land suitability for extensive grazing (pastoralism).....	44
5.4	Land suitability for forestry.....	50
5.5	Comparison of suitability for the major types of land use .....	59
<b>6</b>	<b>FURTHER DEVELOPMENT OF LAND EVALUATION PROCEDURE ...</b>	<b>61</b>

**7 BIBLIOGRAPHY ..... 62****List of Annexes**

ANNEX 1: Resource Base Units.....	64
ANNEX 2: Crop requirements .....	66
ANNEX 3: Crop requirements (irrigated crops).....	67
ANNEX 4: Requirements forestry species .....	68
ANNEX 5: Requirements forestry species (species presently not included in SOMALES).....	69
ANNEX 6: Use forestry species .....	70
ANNEX 7: SOMALES: Severity level decision trees for Rainfed Agriculture.....	72
ANNEX 8: SOMALES: Severity level decision trees for Irrigated Agriculture .....	86
ANNEX 9: SOMALES Severity level decision trees for Pastoralism.....	95
ANNEX 10: SOMALES: Severity level decision trees for Forestry .....	103

**List of Tables**

Table 1: Crop calendar for Rainfed Agriculture .....	7
Table 2: Crop calendar for Irrigated Agriculture .....	9
Table 3: Regions, districts, and their populations (Somalia UNDP 2007, draft).....	12
Table 4: Simplified soil classes for land evaluation.....	14
Table 5: Soil characteristics used for land evaluation .....	15
Table 6: Length of longest LGP and rainfall variability during that Growing Period .....	16
Table 7: Total LGP and annual rainfall variability of the 15 LGP Zones of Somalia.....	16
Table 8: Mean annual temperature classes for Somalia and correlation with altitude zones...	17
Table 9: Simplified relief classes for land evaluation .....	17
Table 10: Slope classes for land evaluation .....	18
Table 11: Aggregated landcover classes of study area for land evaluation.....	18
Table 12: Diagnostic Land Qualities for various major types of land use .....	24
Table 13: Land Use Types.....	26
Table 14: Land suitability for Rainfed Agriculture.....	33
Table 15: Land suitability for Rainfed Agriculture (summary) .....	34
Table 16: Land suitability for Irrigated Agriculture .....	42
Table 17: Land suitability for Irrigated Agriculture (summary).....	43
Table 18: Land suitability for Irrigated Agriculture: with & without soil fertility improvement	43
Table 19: Land suitability for Extensive Grazing .....	49
Table 20: Land suitability for Extensive Grazing (summary).....	49
Table 21: Land suitability for Forestry .....	57
Table 22: Land suitability for Forestry (Summary).....	58
Table 23: Summary of tree species suitable for various environments and uses.....	58
Table 24: Overview of land suitability for major types of land use.....	60

**List of Figures**

Figure 1: Study area .....	1
Figure 2: Mean monthly P and PET patterns in the study area (1963-1990) .....	3
Figure 3: Length of Growing Period Zones .....	5
Figure 4: Methodological framework.....	20

**List of Maps**

Map 1: Land Use of the Juba and Shabelle Riverine areas.....	10
Map 2: Resource Base Units.....	22
Map 3: Land suitability for Rainfed Agriculture: Maize (short GP) .....	29
Map 4: Land suitability for Rainfed Agriculture: Sorghum (short GP) .....	31
Map 5: Land suitability for Irrigated Agriculture: Paddy Rice .....	36
Map 6: Land suitability for Irrigated Agriculture: Citrus (and banana, papaya, mango) .....	38
Map 7: Land suitability for Irrigated Agriculture: Sugarcane.....	40
Map 8: Land suitability for Extensive Grazing (Pastoralism): Cattle .....	45
Map 9: Land suitability for Extensive Grazing (Pastoralism): Camels, Goats, Sheep.....	47
Map 10: Land suitability for Forestry: <i>Azadirachta indica</i> .....	51
Map 11: Land suitability for Forestry: <i>Acacia nilotica</i> .....	53
Map 12: Land suitability for Forestry: <i>Conocarpus lancifolius</i> , <i>Acacia tortilis</i> .....	55

## List of acronyms

ALES	Automated Land Evaluation System
FAO	Food and Agriculture Organization
FSAU	Food Security Analysis Unit
GIS	Geographical Information System
GP	Growing Period
LC	Land Characteristic
LGP	Length of Growing Period
LQ	Land Quality
LUR	Land Use Requirement
LUT	Land Use Type
masl	meters above sea level
P	Precipitation
PET	Potential Evapotranspiration
RBU	Resource Base Unit
SOMALES	Somalia Automated Land Evaluation System
SWALIM	Somalia Water and Land Information Management
UNDP	United Nations Development Programme

## **ACKNOWLEDGMENTS**

The authors wish to acknowledge the considerable support given by the Project Task Force.

Thanks should be addressed to Prof. Musse Shaie Alim for his contribution in the crop requirements and the validation of the results.

Finally we want to express our acknowledgment to all technical and administrative SWALIM staff, especially to Antony O. Ndubi for his valuable work in the edition of the maps.