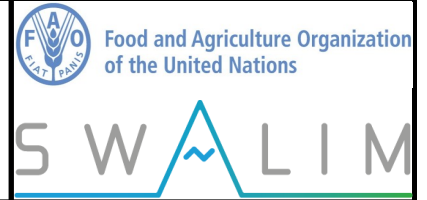


Somalia Flood Watch

Issued: 17 May 2017



FLOOD WARNING LEVEL

	Last Week	Coming Week
Shabelle		
Juba		

KEY TO WARNING LEVELS

Severe Flooding Possible

Moderate Flooding (up to 5 year return period)

Minimal/No Flood Risk

During the week ending on 16 May 2017, there was a significant reduction of rains within the Juba and Shabelle river basins inside Somalia. The upper parts of the Ethiopian highlands continued to receive good rains during the same period. Map - 1 shows the total satellite Rainfall Estimates (RFE) for the same reporting period while Map -2 shows the rainfall forecast for coming week.

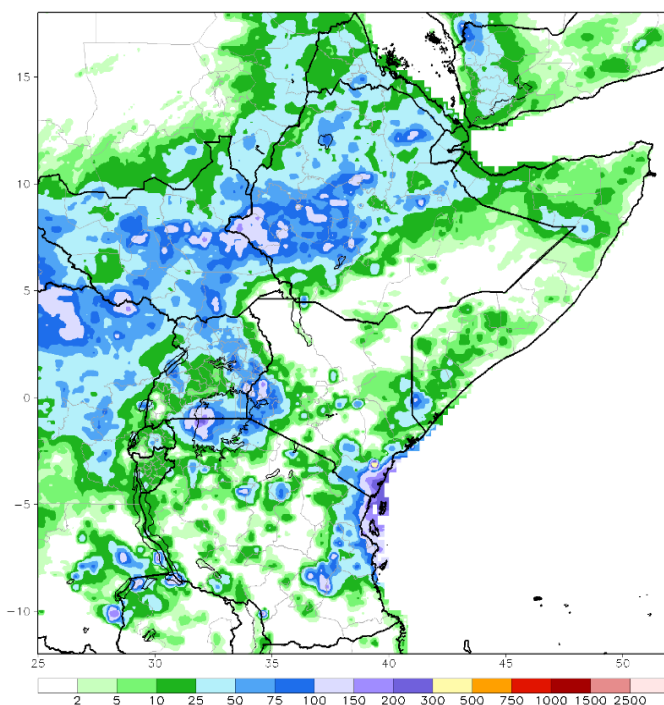
The rainfall forecast for the coming week (Map - 2) is pointing towards moderate to heavy rains in the basins both in the Ethiopian highlands and inside Somalia.

Following the rains that were recorded in the basins in the last few weeks, the river levels along the two rivers rose significantly and are currently above normal levels at this time of the year

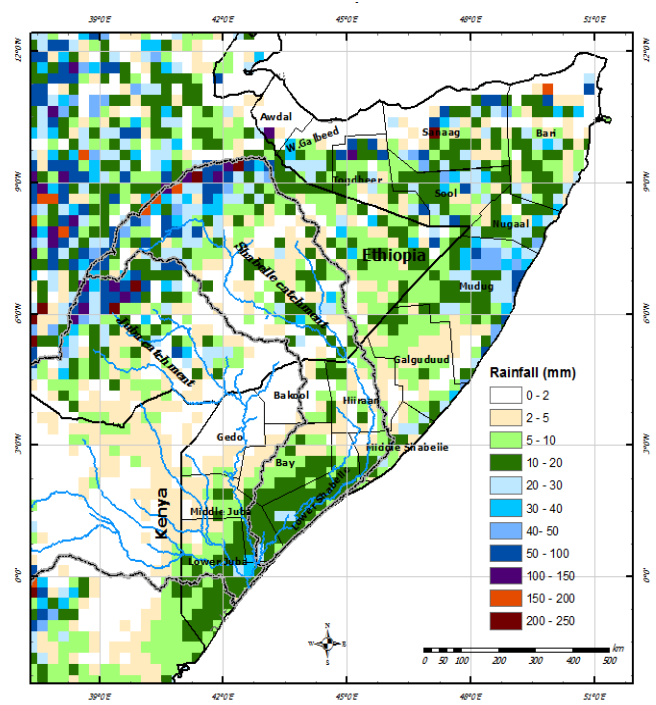
Given the rainfall forecast and the high river levels, there remains a **high** risk of flooding along the middle and lower reaches of Shabelle River. Flooding in Middle Shabelle has been reported in Mahadey, Jowhar and Balcad districts which have caused damage to large amounts of cropped area and displacement of some households.

There is no risk of flooding foreseen along the Juba during the forecast period.

Map -1: Total RFE: Week ending 16 May 2017



Map-2: 7-Day Rainfall Forecast: up to 23 May 2017



This bulletin is produced by the FAO Somalia Water and Land Information Management (SWALIM). For more information send an e-mail to SO-Hydro@fao.org or visit <http://www.faoswalim.org>

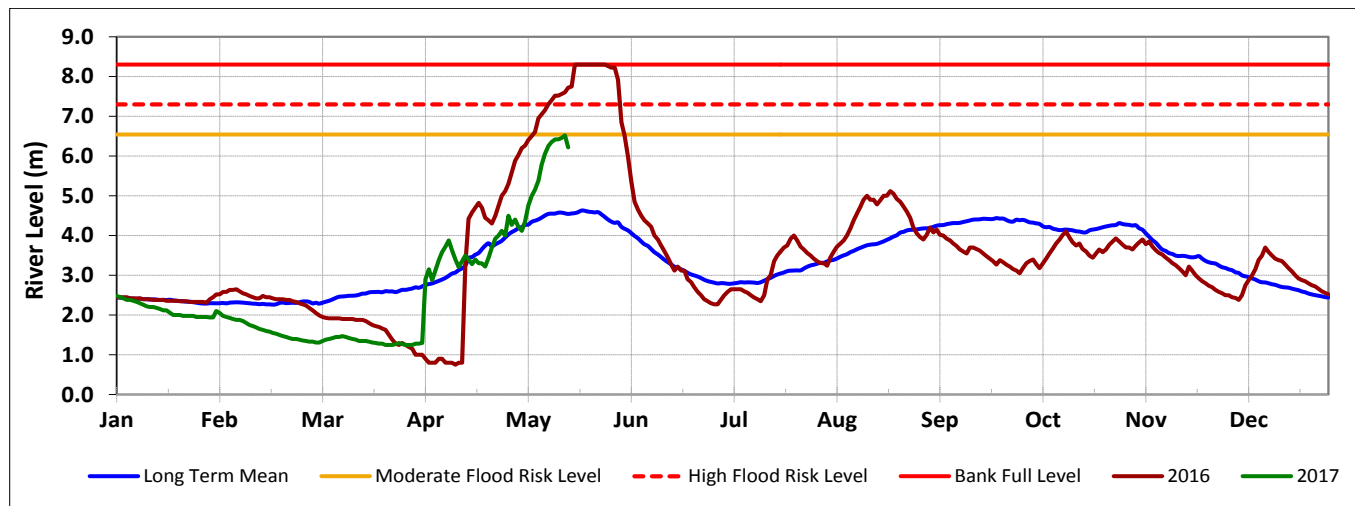
Technical Partners



SWALIM Funding Agencies



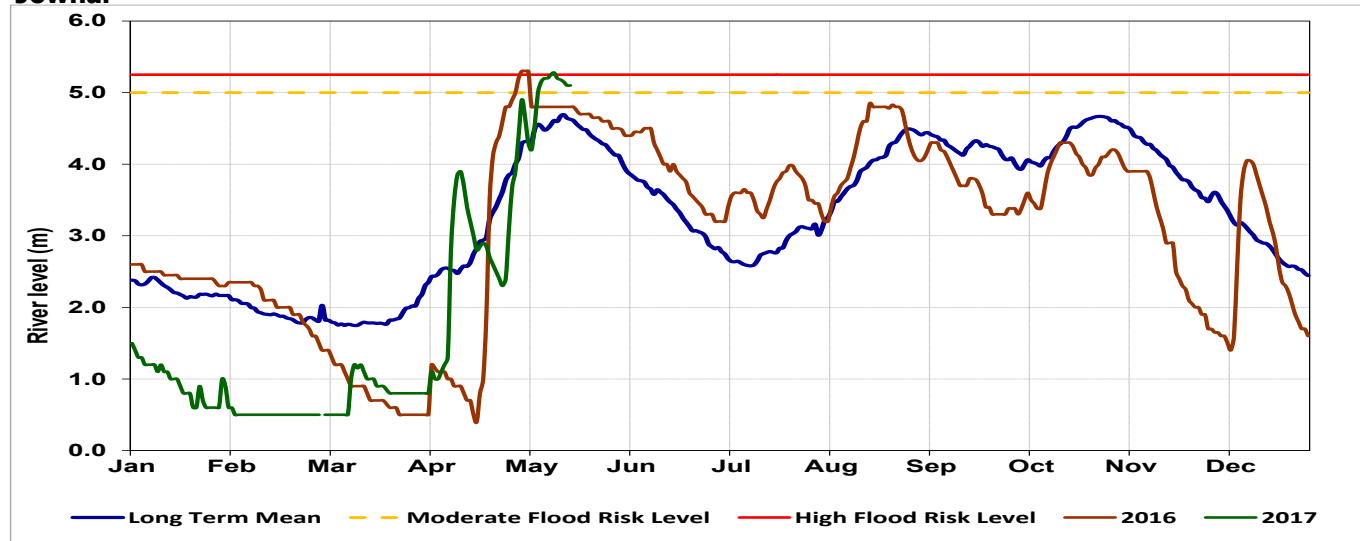
Belet Weyne



Date	Observed River Level (m)	Moderate Flood Risk Level (m)	High Flood Risk Level (m)
16 May 2017	6.22	6.50	7.30

Observed river levels at Belet Weyne continued to rise over the last week and decreased slightly in the last 24 hours. Given the rainfall forecast, the river levels may rise again in the course of the week.

Jowhar



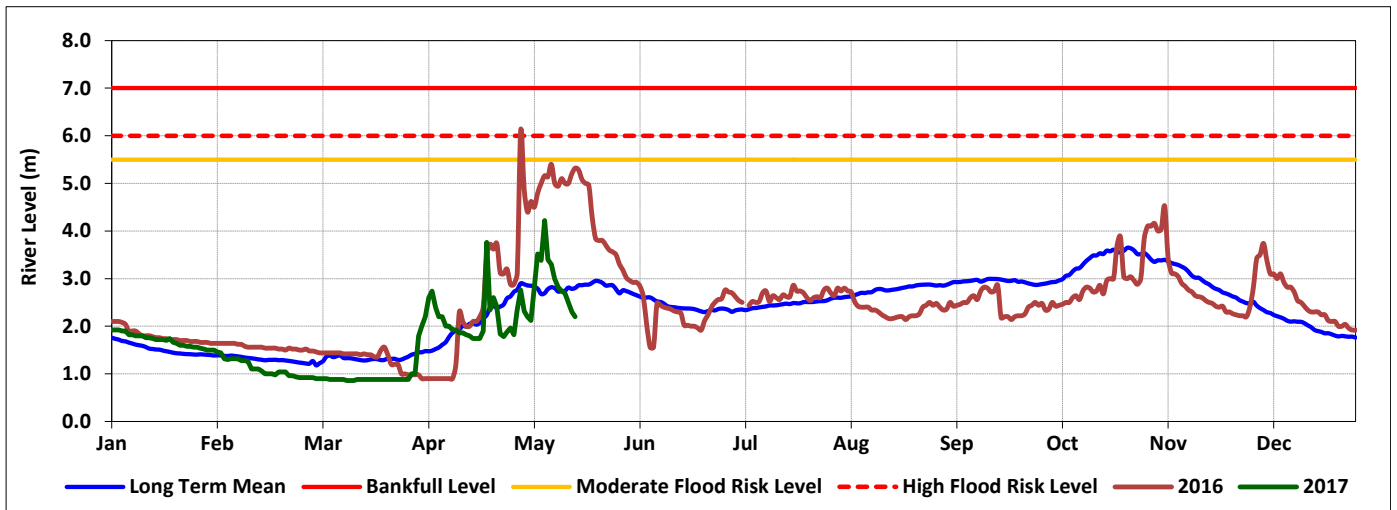
Date	Observed River Level (m)	Moderate Flood Risk Level (m)	High Flood Risk Level (m)
16 May 2017	5.25	5.00	5.25

Observed river levels at Jowhar which is in the middle parts of the river, increased sharply over the last few days and reached the high risk flood level then dropped slightly.

Forecast for coming week for Shabelle

Given the rainfall forecast and the current river levels there is high likelihood of riverine flooding especially in the middle and lower parts of the river in areas with existing open river banks and weak river embankments.

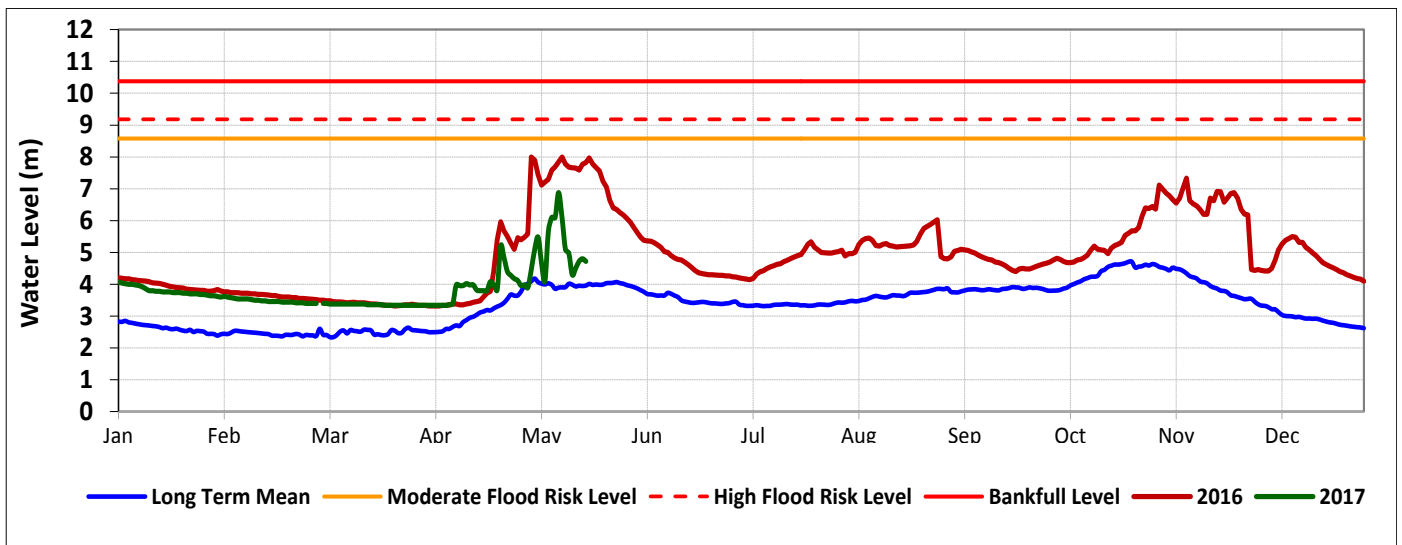
Luuq



Date	Observed River Level (m)	Moderate Flood Risk Level (m)	High Flood Risk Level (m)
16 May 2017	2.20	5.50	6.00

Observed river level at Luuq decreased gradually over the last week. Today's river level is 2.20m.

Bardheere



Date	Observed River Level (m)	Moderate Flood Risk Level (m)	High Flood Risk Level (m)
16 May 2017	4.72	8.58	9.18

Observed river levels at Bardheere fluctuated over the last week.

Forecast for coming week for Juba

There is no risk of flooding along Juba foreseen during the forecast period.