

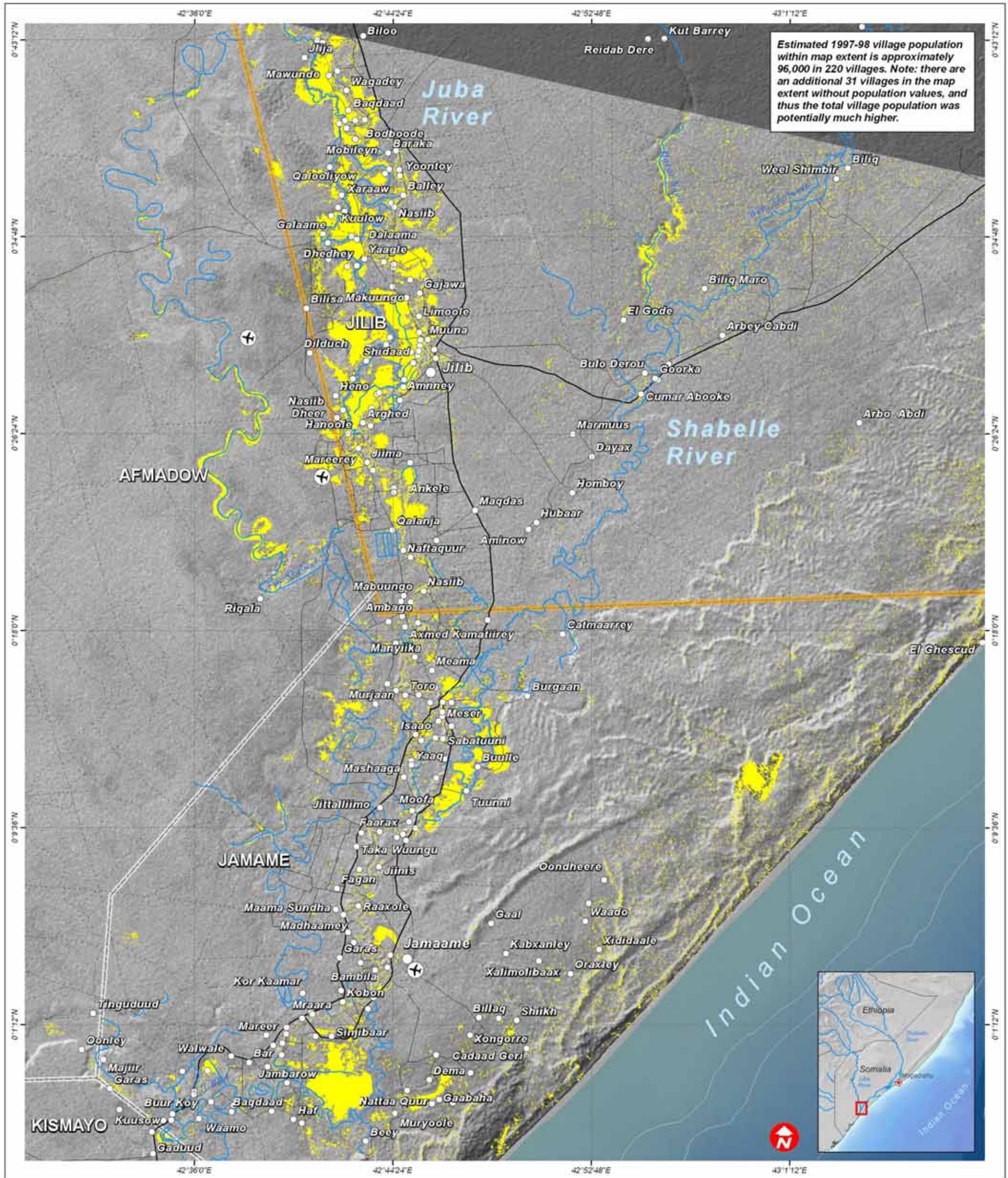
Satellite Identification of Flooded Areas in the Middle & Lower Juba Provinces, Somalia

Identification of Likely Flooded Areas in Districts of Jamame & Jilib, from RADARSAT-1 Data (20 November 2006)

20 November 2006

Version 1.0

Glide No: FL-2006-000161-SOM



Estimated 1997-98 village population within map extent is approximately 96,000 in 220 villages. Note: there are an additional 31 villages in the map extent without population values, and thus the total village population was potentially much higher.

Map Legend

- Radar Identified Flood Waters
- Capital
- Airfield
- Port
- River
- Main Road
- Secondary Road
- Path
- District Boundary
- Province Boundary

Map Information

Glide Number: FL-2006-000161-SOM
 Population Data: UNDP 1997-98 Survey
 Satellite Data: RADARSAT-1 (20 Nov06)
 Sensor Type: Mode Fine (12.5m)
 Copyright: Canadian Space Agency (CSA) 2006
 Distributed by: RADARSAT Int'l Inc., subsidiary of MDA
 GIS Data: GIST, NGA, UNOSAT
 Map Production: UNOSAT (20 November 2006)
 Projection: UTM Zone 38N
 Datum: WGS 1984

Map Description

This map illustrates in yellow those areas likely covered with standing flood waters and exposed soils that are saturated with water over the flood-affected districts of Jamame & Jilib, Middle & Lower Juba Province, Somalia. This analysis was made using RADARSAT-1 data recorded 20 Nov. 2006 & 16 May 2002, and the results have not yet been validated in the field. Population data was collected during a field survey by the UNDP in 1997-98. The depiction and use of boundaries, geographic names and related data shown here are not warranted to be error-free nor do they imply official endorsement or acceptance by the United Nations. This map was produced by the United Nations Institute for Training and Research (UNITAR) Operational Satellite Applications Programme (UNOSAT). UNOSAT provides satellite imagery and related geographic information to UN humanitarian and development agencies and their implementing partners.

Map Scale 1:295,000 for A3 Print

0 2 4 6 8 10 12 14 Kilometers

UNOSAT
 satellite imagery for all
 www.unosat.org
 Contact Information: info@unosat.org
 24/7 Hotline: +41 76 487 4998