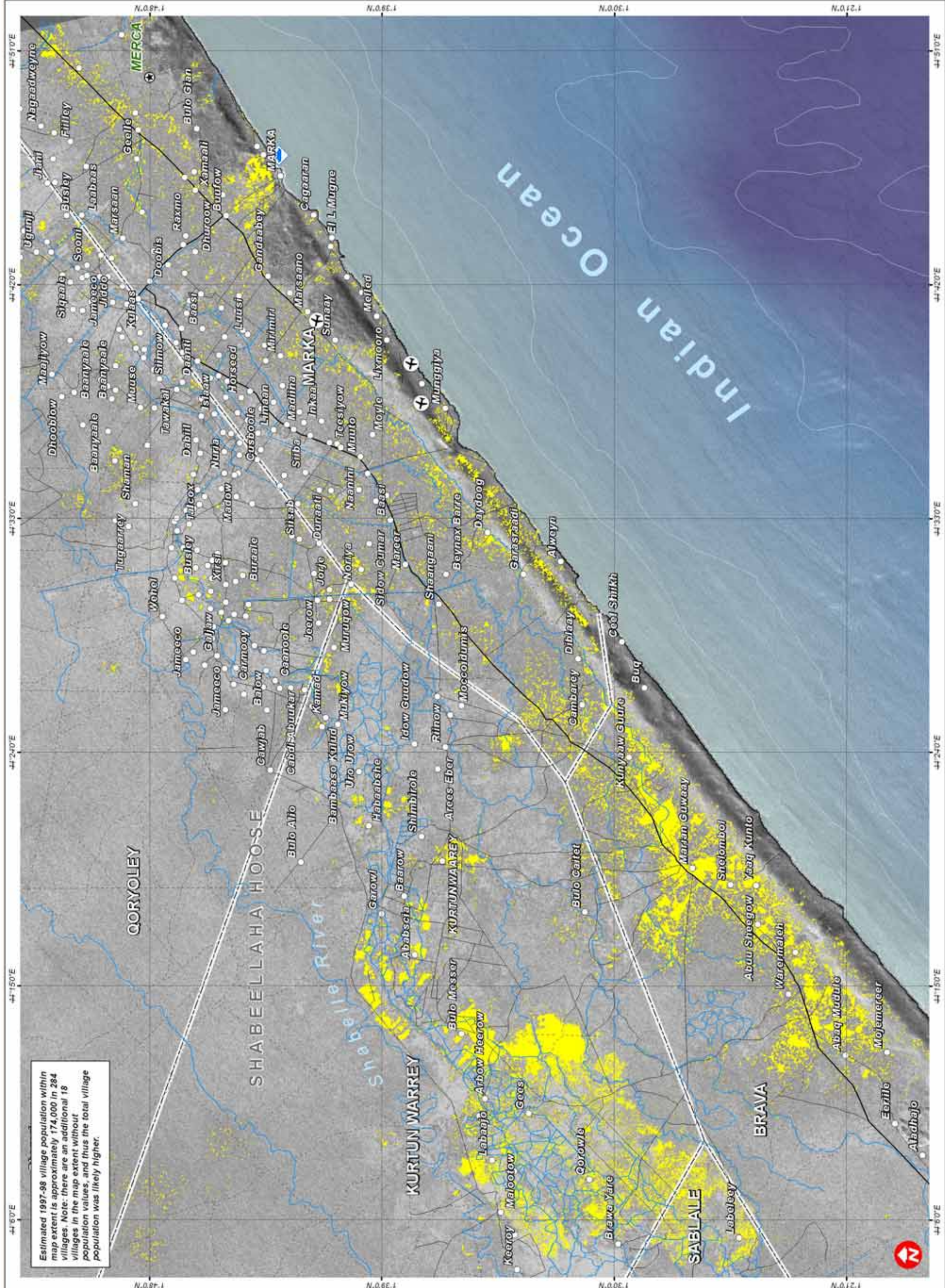


Satellite Identification of Flooded Areas in the Lower Shabelle Province, Somalia

19 November 2006
Version 1.0

Glide No: FL-2006-000161-SOM

Identification of Likely Flooded Areas in Districts of Brava, Marka & Kurtun Warrey, from RADARSAT-1 Data (17 November 2006)



Estimated 1997-98 village population within map extent is approximately 174,000 in 284 villages. Note: there are an additional 18 villages in the map extent without population values, and thus the total village population was likely higher.



Map Information
This map illustrates in yellow those areas likely covered with standing flood waters and exposed soils that are saturated with water over the flood-affected districts of Brava, Marka & Kurtun Warrey, Lower Shabelle Province, Somalia. This analysis was made using RADARSAT-1 data recorded 17 Nov. 2006 & 13 Dec. 2001, and the results have not yet been validated in the field. Population data was collected during a field survey by the UNDP in 1997-98.

The depiction and use of boundaries, geographic names and related data shown here are not warranted to be error-free nor do they imply official endorsement or acceptance by the United Nations. This map was produced by the United Nations Institute for Training and Research (UNITAR) Operational Satellite Applications Programme (UNOSAT). UNOSAT provides satellite imagery and related geographic information to UN humanitarian and development agencies and their implementing partners.

Map Legend

- River
- Main Road
- Secondary Road
- Path
- District Boundary
- Province Boundary
- Boundary
- Radar Identified Flood Waters
- Capital
- Airfield
- Pot

Map Scale
1:265,000 for A3 Print

0 1 2 3 4 5 6 7 8 Kilometers

Glide Number: FL-2006-000161-SOM
Population Data: UNDP 1997-98 Survey
Satellite Data: RADARSAT-1 (17 Nov06)
Sensor Type: Mode Fine (12.5m)
Copyright: Canadian Space Agency (CSA) 2006
Distributed by: RADARSAT Int'l Inc. subsidiary of MDA
GIS Data: UNOSAT
Map Production: UNOSAT (19 November 2006)
Projection: UTM Zone 38N WGS 1984

UNOSAT
satellite imagery for all
www.unosat.org
24/7 Hotlines +41 76 487 4998