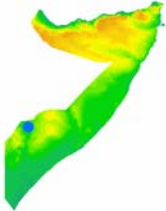


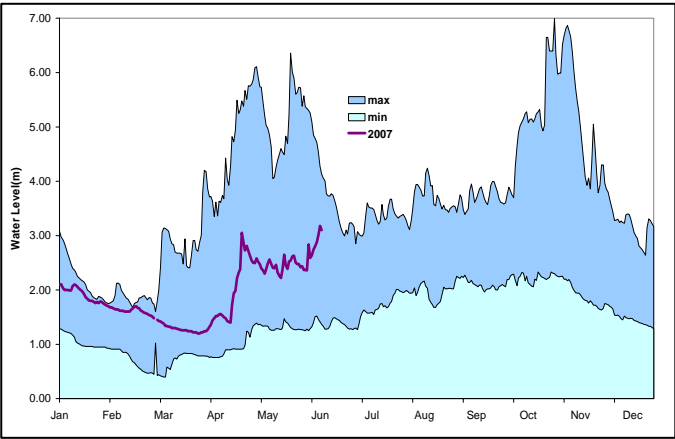
River Gauging Station Information Sheet
1 – Juba at Luuq



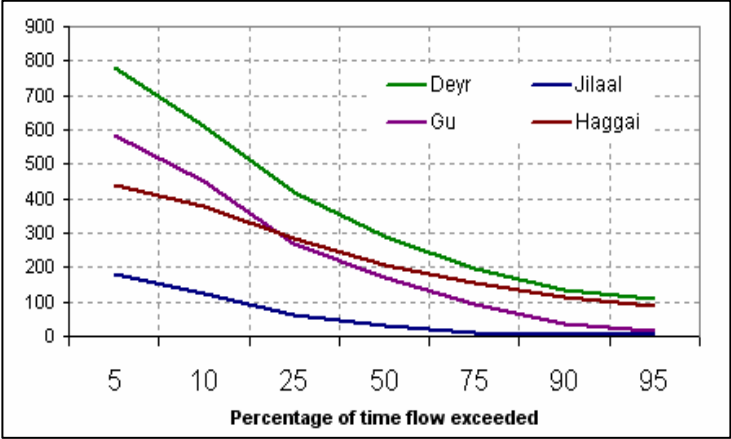
Station Details

Grid Reference:	3:47:30N_42:32:30E	Mean flow:	198.58m ³ s ⁻¹
Operator:	ACA/CARE	95% exceedance (Q95):	9.04 m ³ s ⁻¹
Local number:	1	10% exceedance (Q10):	432.15 m ³ s ⁻¹
Catchment Area:	207,000 km ²	60-90 Av. Ann. Rainfall	250mm
Level of Station:	141.4 m		

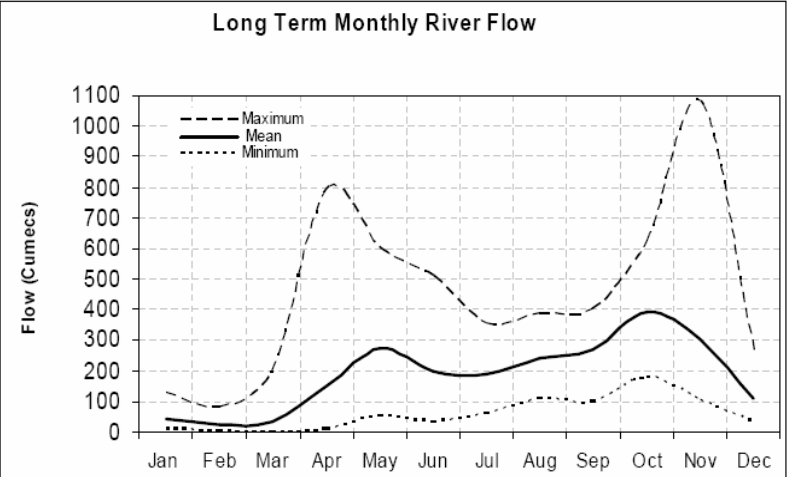
Max. and Min. daily mean flows from 1960 to 2006 excluding featured year 2007 (Flow in m³s⁻¹)



Flow Duration Curve for Gauged Daily (Flow in m³s⁻¹)



Long Term Monthly River Flow



Description of Station

The uppermost station on the Juba River. A pre-war stable rating exists for in-bank flows. A new staff gauge was installed in march 2002 at the exact position of the pre war gauge.

The staff gauge is read daily by ACA and sent to SWALIM via e-mail or telephone communication.

No stream flow measurement.

