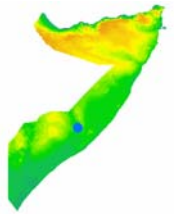


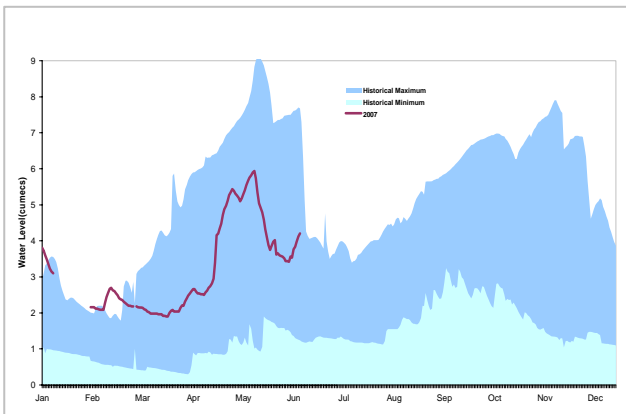
River Gauging Station Information Sheet
11 – Shabelle at Bulu Burti



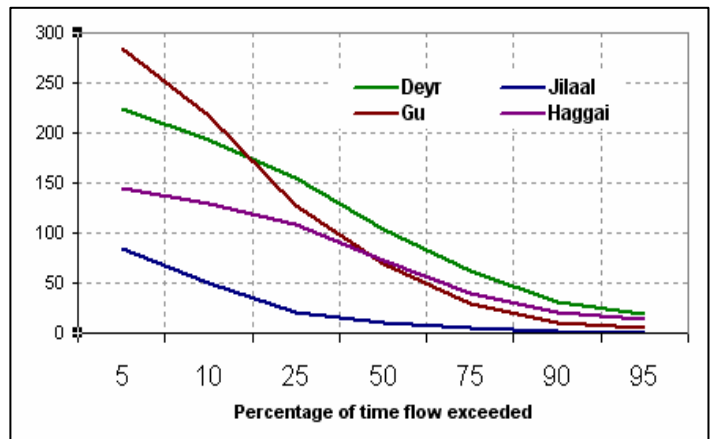
Station Details

Grid Reference:	3:51:20 N_45:34:20 E	Mean flow:	69.73 m ³ s ⁻¹
Operator:	SWALIM	95% exceedance (Q95):	1.96 m ³ s ⁻¹
Local number:	11	10% exceedance (Q10):	166.47 m ³ s ⁻¹
Catchment Area:	166,000 km ²	1960-1990 Av. Ann. Rainfall	250mm
Level of Station:	133.4 m		

Max. and Min. daily mean flows from 1960 to 2006 excluding featured year 2007 (Flow in m³s⁻¹)



Flow Duration Curve for Gauged Daily (Flow in m³s⁻¹)



Station Description

Important station for monitoring floods. About two days lag from Belet Weyne whilst flow in bank. Little irrigation in reach. Several minor tributaries flow in to the reach contributing considerably to the streamflow during the wet seasons.

New staff gauge installed in April 2002, 200m downstream of the old gauge. Pre war rating still used and no flow measurement are carried out at the station.

Data transmitted to SWALIM via telephone or e-mail communication.

Long Term Monthly River Flow

