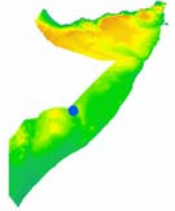


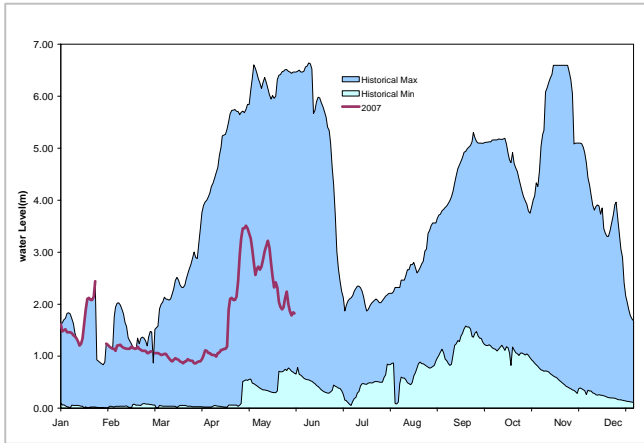
**River Gauging Station Information Sheet**  
**10- Shabelle at Belet Weyne**



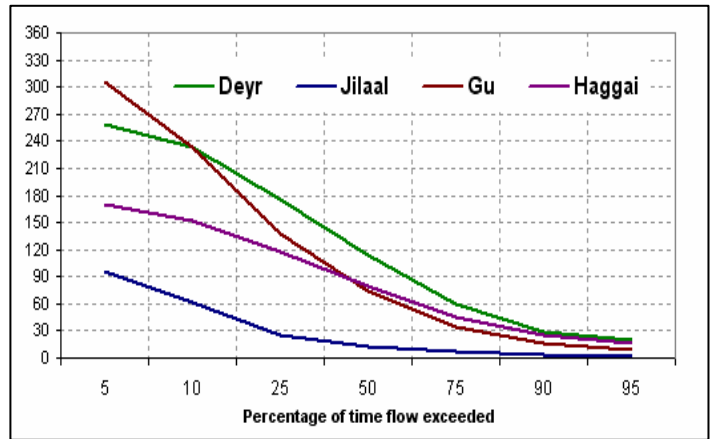
**Station Details**

Grid Reference:	4:44:0N_45:12:20E	Mean flow:	79.93 m <sup>3</sup> s <sup>-1</sup>
Operator:	SCF	95% exceedance (Q95):	4.66 m <sup>3</sup> s <sup>-1</sup>
Local number:	10	10% exceedance (Q10):	185.30 m <sup>3</sup> s <sup>-1</sup>
Catchment Area:	207,000 km <sup>2</sup>	60-90 Av. Ann. Rainfall	250mm
Level of Station:	176.1 m		

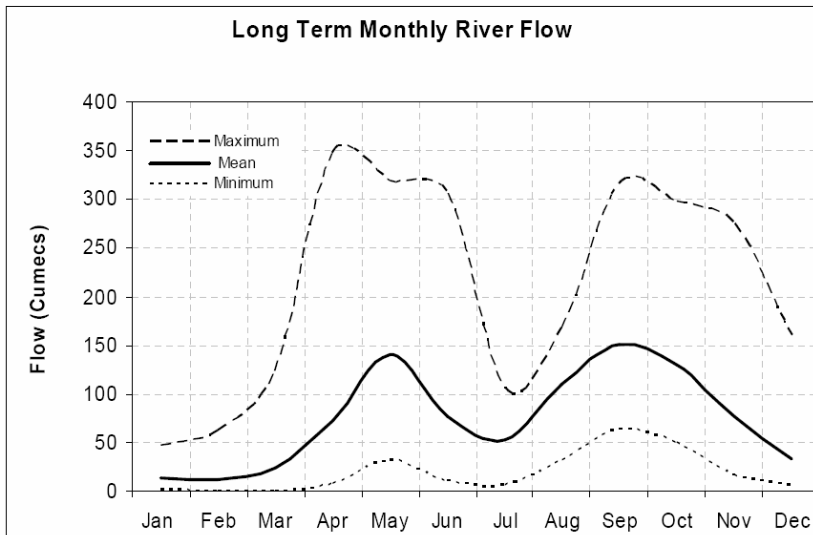
**Max. and Min. daily mean flows from 1963 to 2006 excluding featured year 2007 (Flow in M<sup>3</sup>S<sup>-1</sup> )**



**Flow Duration Curve for Gauged Daily (Flow in M<sup>3</sup>S<sup>-1</sup> )**



**Long Term Monthly River Flow**



**Description of Station**

The uppermost station on the Shabelle River. A pre-war stable rating exists for in-bank flows. A new staff gauge was installed in march 2002 at the exact position of the pre war gauge but an adjustment of -1.738m has to be done to fit with the pre war datum.

The staff gauge is read daily by Save the Children Fund(SCF) and sent to SWALIM via e-mali or telephone.

No stream flow measurement.