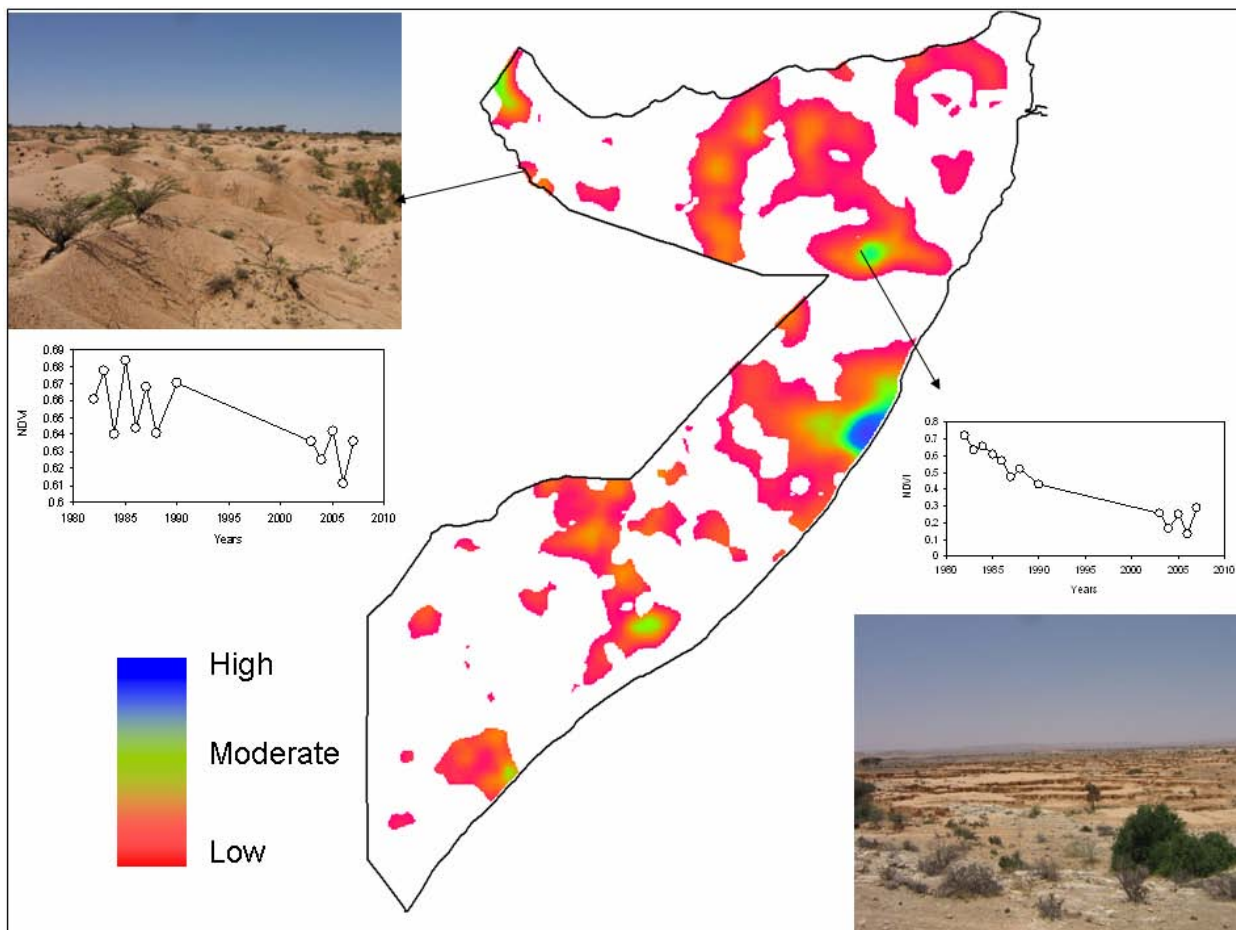


Land Degradation Assessment and a Monitoring Framework in Somalia



Project Report No L-14

June 2009

Somalia Water and Land Information Management
 Ngecha Road, Lake View. P.O Box 30470-00100, Nairobi, Kenya.
 Tel +254 020 4000300 - Fax +254 020 4000333,
 Email: enquiries@faoswalim.org Website: <http://www.faoswalim.org>.



Disclaimer

The designations employed and the presentation of material in this information product do not imply the expression of any opinion whatsoever on the part of the Food and Agriculture Organization of the United Nations concerning the legal status of any country, territory, city or area or of its authorities, or concerning the delimitation of its frontiers or boundaries.

This document should be cited as follows:

FAO-SWALIM Technical Report L-14: Omuto, C.T., Vargas, R. R., Alim, M.S., Ismail, A., Osman, A., Iman. H.M. 2009. Land degradation assessment and a monitoring framework in Somalia. Nairobi, Kenya.

Acknowledgements

We wish to acknowledge considerable support and guidance given by the Project Task Force. Dr. Freddy Nachtergaele and Dr. Hubert George are especially thanked for their overall contribution to this study.

Valuable technical inputs were received from FAO-SWALIM's CTA Dr. Zoltan Balint. We thank you for giving this study its final direction.

The expert assessment of land degradation reported in this document was done with technical inputs from many Somalis and international staff working in Somalia. They are highly acknowledged. We also received valuable comments from Dr. Hanspeter Liniger, Dr. Sally Bunning, and Drs. Godert van Lynden during the development of the concept note for this study. We thank you all for the contributions you gave.

A special acknowledgement also goes to various departments of the Government of Somalia, NGOs, UN institutions and Universities who contributed in many ways to this study.

Finally we want to express our acknowledgment to all staff of FAO-SWALIM for their input during data collection and analysis. The water team especially contributed immensely with climate and water resources data. Simon Mumuli Oduori developed and edited the land use systems map, which was central to experts' assessment of land degradation.

Table of contents

Disclaimer	ii
Acknowledgements	iii
List of figures	vii
List of tables	ix
List of acronyms	x
1. INTRODUCTION	1
2. STUDY AREA	3
2.1 Climate	4
2.2 Soil and Vegetation	6
2.3. Geomorphology and main water sources	7
2.4. Population and land use dynamics	9
3. METHODOLOGY	10
3.1 LADA-WOCAT method for national assessment of land degradation	11
3.1.1 Development of land use systems map	12
3.1.2 Validation of LUS map and expert assessment using questionnaire	12
3.1.3 Mapping land degradation and sustainable land management using outputs from expert assessment	16
3.2 Remote sensing method for assessing land degradation.....	17
3.2.1 Spatial prediction of rainfall amounts.....	18
3.2.2 Mixed-effects modelling and trend analysis of the residual from NDVI- rainfall relationship	20
3.2.3 Data	23
3.2.4 Validation of NDVI analysis of land degradation.....	26

4.	RESULTS AND DISCUSSIONS	28
4.1	The land use systems map of Somalia.....	28
4.2	Experts assessment of land degradation in Somalia	28
4.2.1	Identification of causes, status, and responses to land degradation.....	28
4.2.1.3	Status of land degradation	31
4.2.1.4	Impacts on ecosystem services	36
4.2.1.5	Responses to land degradation.....	37
4.3	Loss of vegetation cover in Somalia.....	39
4.3.1	Identification of affected areas	39
4.3.2	Validation of remote sensing method for land degradation assessment .	40
4.4	Integrating results from expert assessment and remote sensing analysis of land degradation in Somalia.....	41
5.	RECOMMENDATIONS FOR LAND DEGRADATION MONITORING FRAMEWORK IN SOMALIA	43
5.1	Theoretical framework for national monitoring of land degradation.....	43
5.1.1	Expert-based information for monitoring land degradation.....	44
5.1.2	Remote-sensing-based information for monitoring land degradation.....	46
5.2	Practical steps for implementing land degradation monitoring in Somalia .	47
5.2.1	Institutional support.....	48
5.2.2	Capacity building	48
5.2.3	Proposed timeline for implementing the monitoring framework.....	49
6.	CONCLUSIONS AND RECOMMENDATIONS	51

REFERENCES	52
APPENDICES	55
Appendix 1 Example of filled questionnaire for national assessment of land degradation in Somalia.....	56
Appendix 2 List of participants for expert assessment of land degradation ...	61
Appendix 3 Analytical methods for assessing land degradation	62
Appendix 3.1 Modelling NDVI-rainfall relationship	62
Appendix 3.2 Mixed-effects modelling results of NDVI-rainfall relationship in Somalia and comparison with a global model.....	65
Appendix 4 Results of expert assessment of land degradation in Somalia	73
Appendix 5: Description of land use systems map for Somalia	77
Appendix 6: Proposed sites for validating land degradation in Somalia	83

List of figures

Figure 2.1: The study area	3
Figure 2.2: Main climatic patterns of Somalia (FAO-SWALIM Report No. W01)	5
Figure 3.1: National assessment and monitoring of land degradation in Somalia	10
Figure 3.2: Methodology for national assessment of land degradation using expert knowledge	11
Figure 3.3: Development of land use systems map for Somalia.....	12
Figure 3.4: Somali experts during a land degradation assessment meeting.....	14
Figure 3.5: Example of LADA-WOCAT questionnaire for assessing land degradation	15
Figure 3.6: Methodology for national assessment of land degradation using remote sensing	18
Figure 3.7: Example of the relationship between 1983 rainfall amounts and altitude	19
Figure 3.8: Example of validation of spatial prediction of rainfall amounts in 1983 ..	20
Figure 3.9: Example of identification of degraded land using residual trend analysis in Somalia.....	21
Figure 3.10: Comparison of NDVI-rainfall relationship for 1983 using mixed-effects modelling and commonly used one-model approach.....	22
Figure 3.11: Examples of NDVI images for Somalia.....	24
Figure 3.12: Summary of NDVI data for Somalia	25
Figure 3.13: Summary of mean annual rainfall for Somalia	26
Figure 4.1: Summary of the major direct causes of land degradation in Somalia	30
Figure 4.2: DIPSIR model for Somalia	31
Figure 4.3: Example of impact of land degradation in Somalia	37
Figure 4.4: SLM responses to land degradation in Somalia	38
Figure 4.5: Selected photographs for validating NDVI analysis of loss of vegetation cover	41
Figure 4.6: Bright and hotspots map for land degradation in Somalia	42

Figure 4.7: Sites for validating land degradation in Somalia	43
Figure 5.1: Theoretical monitoring framework for land degradation	44
Figure 5.2: Monitoring trend of land degradation using expert opinion	45
Figure 5.3: Monitoring trend of land degradation using remote sensing	46
Figure 5.4: Practical steps towards implementing land degradation monitoring in Somalia	47

List of tables

Table 2.1: Areal coverage of natural vegetation in Somalia	6
Table 3.1: Thresholds for categorizing land degradation maps from expert assessment.....	17
Table 3.2: Guidelines for assessing loss of vegetation cover in the field.....	27
Table 4.1: Extent of prevalent land degradation types in Somalia from Map N3.....	36
Table 4.2: Extent of land degradation in Somalia from Map N2	36
Table 4.3: Distribution of SLM practices in Somalia from Map N4	38
Table 4.4: Loss of vegetation cover by land use systems units in Somalia	39
Table 5.1: Proposed timeline for implementing land degradation monitoring in Somalia.....	50

List of acronyms

ADO	- Agricultural Development Organization
AEZ	- Agro-Ecological Zones
ASTER	- Advanced Space-borne Thermal Emission and Reflection Radiometer
AVHRR	- Advance Very High Resolution Radiometer
BVO	- Barwaaqo Voluntary Organization
CART	- Classification and Regression Trees
CBO	- Community Based Organization
CTA	- Chief technical Advisor
DEM	- Digital Elevation Model
FAO	- Food and Agriculture Organization
FSAU	- Food Security and Assessment Unit
GAA	- German Agro Action
GLADA	- Global Land Degradation Assessment
IFAD	- International Fund for Agricultural Development
ITCZ	- Inter-Tropical Convergence Zone
LADA	- Land Degradation Assessment
LUS	- Land Use System
MODIS	- Moderate-Resolution Imaging Spectrometer
NDVI	- Normalized Difference Vegetation Index
PENHA	- Pastoral and Environmental Network in the Horn of Africa
PRA	- Participatory Rural Appraisal
RUSLE	- Revised Universal Soil Loss Equation
SAR	- Synthetic Aperture Radar
SLM	- Sustainable Land Management
SPOT	- Satellite Probatoire d'Observation de la Terre (The French Remote Sensing Satellite)
SRTM	- Shuttle Radar Topography Mission
SWALIM	- Somalia Land and Water Information Management
SWC	- Soil and Water Conservation
UN	- United Nations
UNEP	- United Nations Environment Program
UNOPS	- United Nations Office for Project Services
WFP	- World Food Program