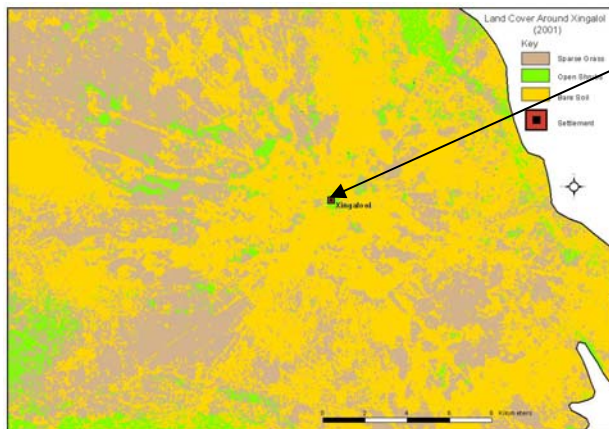
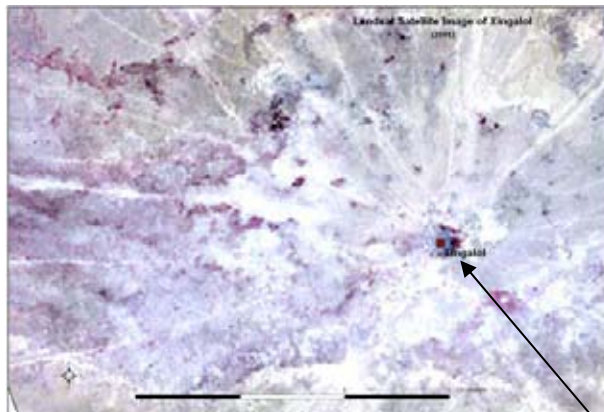


Application of Remote Sensing Techniques for the Assessment of Pastoral Resources in Puntland, Somalia



Project Report No. L-11

July 2007



Somalia Water and Land Information Management
Ngecha Road, Lake View. P.O Box 30470-00100, Nairobi, Kenya.
Tel +254 020 4000300 - Fax +254 020 4000333,
Email: enquiries@faoswalim.org Website: <http://www.faoswalim.org>.



The designations employed and the presentation of material in this document do not imply the expression of any opinion whatsoever on the part of the Food and Agriculture Organization of the United Nations and the SWALIM Project concerning the legal status of any country, territory, city or area of its authorities, or concerning the delimitation of its frontiers or boundaries.

This document should be cited as follows:

Oroda A S, Oduori S M, Vargas R R, 2007: Applications of Remote Sensing Techniques for the Assessment of Pastoral Resources in Puntland, Somalia by FAO-SWALIM. Project Report No. L-11. Nairobi, Kenya.

ACKNOWLEDGMENTS

The authors wish to acknowledge the considerable support given by the Project Task Force during the preparation of this report. Special thanks go to GLCN for their significant contribution to the databases therein.

We wish to say a big thank you to our Somali experts (especially Ahmed Isse Mohamed, Ahmed Mohamed Mohamud, Mohammed Shire, Suleiman Jama Farah, and Muhamed Mahmud) and our Somali fieldwork support team (that included the very able and helpful drivers and security personnel) that braved their way through the difficult conditions during the collection of data that otherwise, without which, the entire study would have been left at its concept stage. We also thank FAO-SWALIM's Liaison Officer in Puntland, Mr. Osman Abdulle, who helped a great deal in logistical arrangements to facilitate the fieldwork. We would also like to acknowledge contribution from Care-Somalia's Office in Garowe for its financial and technical support that facilitated the two weeks' fieldwork.

We also wish to acknowledge the immense contributions from our colleagues at FAO-SWALIM, especially the technical contributions from Musse Shaie and technical and administrative support from Dr. Zoltan Balint that made the implementation of this exercise a success.

We are highly grateful to USGS-EROS, particularly James Rowland, for providing us with the Aster Satellite images free of charge.

Many thanks go to the European Community for their financial contribution and, special thanks to Mr. Luciano Mosele and Mr. Friedrich Mahler from the EU Office in Nairobi, Kenya for their technical support to this work.

TABLE OF CONTENTS

1	INTRODUCTION	1
1.1	Background	1
1.2	Objectives	2
1.3	Structure of this report.....	2
2	THE STUDY AREA	3
2.1	Location and delineation	3
2.2	Climate and other environmental conditions	4
2.3	Land cover and land use.....	5
3	METHODS.....	6
3.1	Bibliographic review.....	6
3.2	Acquisition and preparation of remote sensing products	7
3.3	Land cover and vegetation mapping	7
3.3.1	Preliminary land cover mapping	8
3.3.2	Field survey for land cover and vegetation mapping	9
3.3.3	Vegetation sampling	10
3.3.4	Biomass assessment and estimation.....	11
3.3.5	Final map preparation.....	11
3.4	Assessing and detecting land cover change	12
3.5	Assessing drought	12
3.6	Identification of non-palatable and invasive vegetation species	16
3.7	Detecting impacts of water points and settlements	17
4	RESULTS AND DISCUSSION	18
4.1	Land cover and vegetation mapping	18
4.1.1	Land cover and vegetation maps.....	18
4.1.2	Biomass assessment and estimation.....	20
4.2	Land cover change detection.....	26
4.3	Drought assessment	30
4.3.1	Drought assessment using Landsat Satellite images.....	30
4.3.2	Drought assessment using NDVI and VCI values derived from NOAA NDVI and SPOT NDVI data.....	31
4.4	Detection of impacts from water points and Settlements	40
4.5	Assessment and detection of non-palatable and invasive vegetation species	48
5	CONCLUSIONS AND RECOMMENDATIONS	49
5.1	Conclusions	49
5.1.1	Assessment of changes and trends in land cover using satellite image interpretation and field survey.....	49
5.1.2	Assessing applicability of remote sensing to study phenological behaviour and physiognomic variability of major vegetation groups as an input for the analysis of drought conditions	49
5.1.3	Remote sensing in assessing impacts of human activities the pastoral resources with focus on settlements, water points and vegetation removal	50
5.1.4	Potentialities and limitations of using remote sensing techniques and products in assessing invasive and non-palatable plant species	50
5.2	Recommendations	50
5.2.1	Assessing changes and trends in land cover using remote sensing and field survey	50
5.2.2	Assessing the phenological behaviour and physiognomic characteristics of major vegetation groups as an input in the analysis of drought conditions.....	51
5.2.3	Assessing impacts of human activities on the pastoral resources using remote sensing techniques.....	51
5.2.4	Potentialities and limitations of using remote sensing techniques and products in assessing non-palatable and invasive plant species	51

6	BIBLIOGRAPHY	52
7	ANNEXES	56

List of figure

Figure 1: Location of study area seen in the context of Somalia	3
Figure 2: Rainfall distribution and Potential Evapotranspiration in northern Somalia	4
Figure 3: Mean maximum monthly temperatures from 4 meteorological stations	5
Figure 4: Land cover and vegetation mapping procedures	8
Figure 5: Taking pictures in the field for land cover verification	9
Figure 6: Photo showing vegetation sampling procedure	10
Figure 7: Vegetation sampling technique along a transect line	11
Figure 8: Schematic presentation of the steps to generated NDVI and drought maps from Landsat images.....	14
Figure 9: Diagram representing the schematic presentation of NOAA NDVI generation	15
Figure 10: A vegetation condition index (VCI) curve showing drought onditions in the northern study area from Landsat images (1973 – 2001)	30
Figure 11: Vegetation condition index curve for drought assessment in the southern study area (Landsat images – 1973 – 2001)	30
Figure 12: Average monthly vegetation condition index values for the main growing seasons in the northern study area from NOAA NDVI data	31
Figure 13: Average monthly Vegetation condition index values for the main growing season for the southern study area from NOAA NDVI data	32
Figure 14: Average monthly vegetation condition index values for the main growing season for northern study area from SPOT NDVI data	32
Figure 15: Monthly vegetation condition index for the main growing season for the southern study area from SPOT NDVI data	33
Figure 16: Annual vegetation condition index for the northern study area from NOAA NDVI data	33
Figure 17: Annual vegetation condition index for the southern study area from NOAA NDVI data	34
Figure 18: Long Term Mean NDVI values for the two study sites derived from NOAA ...	35
Figure 19: Annual NDVI values for the northern study site derived from NOAA GAC data.....	35
Figure 20: Annual NDVI values for the southern study site derived from NOAA-GAC data.....	36
Figure 21: SPOT NDVI sample point 1.....	36
Figure 22: SPOT NDVI Sample Point 14.....	36
Figure 23: SPOT NDVI Sample Point 32.....	37
Figure 24: SPOT NDVI Sample Point 70.....	37
Figure 25: SPOT NDVI Sample Point 59.....	37
Figure 26: SPOT NDVI Sample Point 73.....	37
Figure 27: Years of drought as reported by the respondents from the field – northern study site	37
Figure 28: Years of drought as reported by the respondents from the field – southern study area	38
Figure 29: Changes in NDVI Values around Settlements and Water Points as derived from satellite images of 1973, 1988 and 2001	40
Figure 30: Land Cover Change around Settlements.....	41
Figure 31: Land Cover Change around Settlements.....	42
Figure 32: Damal Cirbiido before being settled in this image of 1988.....	43
Figure 33: Damal Cirbiido: Land cover change and increase in vehicle tracks.....	44
Figure 34: Aster Image of Damal Cirbiido showing changes in land cover and increased motor tracks	45
Figure 35: Impacts of settlements on land cover change between 1988 and 2001 – the example of Damal Cirbildo settlement	46
Figure 36: Impacts of settlements on land cover change between 1988 and 2001 – the example of Damal Cirbildo settlement	47

List of Tables

Table 1: Land Cover Classes from the northern study area	18
Table 2: Land Cover Classes from the southern study area	18
Table 3: Herbaceous biomass results from the northern study area	20
Table 4: Percentage land cover change by visual interpretation.....	26
Table 5: Land Cover Change between 1988 and 2001	26
Table 6: Accuracy test matrix for the digitally classified Land Cover Map (FAO SWALIM)	27
Table 7: Incidence of invasive non palatable plant species	48

List of Maps

Map 1: Land cover and vegetation map of the northern area of study from visual satellite image interpretation	21
Map 2: Land cover map and vegetation map of the southern area of study from visual image interpretation	22
Map 3: Biomass Assessment map of the northern study area as in April 2007	23
Map 4: Land cover map of the study areas from automatic digital classification (Landsat images of 1988)	24
Map 5: Land cover map of the study areas from automatic digital classification (Landsat images of 2001)	25
Map 6: Land cover change map from visual interpretation.....	29
Map 7: Selected sample points from which SPOT NDVI values were extracted.....	39

LIST OF ACRONYMS

AOI	Area of Interest
AVHRR	Advanced Very High Resolution Radiometer
CC	Colour Composite
EC	European Commission
DEM	Digital Elevation Model
EROS	Earth Resources Observation System
ETM	Enhanced Thematic Mapper
FAO	Food and Agriculture Organization of the United Nations
FCC	False Colour Composite
FEWSNET	Famine Early Warning System Network
FSAU	Food Security and Assessment Unit
GAC	Global Area Coverage
GIS	Geographic Information Systems
GLCN	Global Land Cover Network
GLCRSP	Global Livestock Collaborative Research Support Programme
GPS	Global Positioning System
ICPAC	IGAD Climate Prediction and Application Centre
LADA	Land Degradation Assessment in Drylands
LCCS	Land Cover Classification System
LINKS	Livestock Information Network and Knowledge System
LTM	Long Term Mean
MODIS	Moderate-Resolution Imaging Spectrometer
MOLAE	Ministry of Livestock, Agriculture and Environment in Puntland
MSS	Multi-Spectral Scanner System
NDVI	Normalised Difference Vegetation Index
NOAA	National Oceanic and Atmospheric Administration
PET	Potential Evapotranspiration
RCMRD	Regional Centre for Mapping of Resources for Development
RFE	Rainfall Estimates
SDRN	Sustainable Development Research Network
SRTM	Shuttle Radar Topographic Mission
SPOT	Satellite Probatoire d'Observation de la Terre (The French Remote Sensing Satellite)
SWALIM	Somalia Water and Land Information Management
TM	Thematic Mapper
TOA	Top-of-the-atmosphere
UNDP	United Nations Development Programme
USGS	United States Geological Survey
VCI	Vegetation Condition Index
VEDAS	Vegetation Dynamics Software