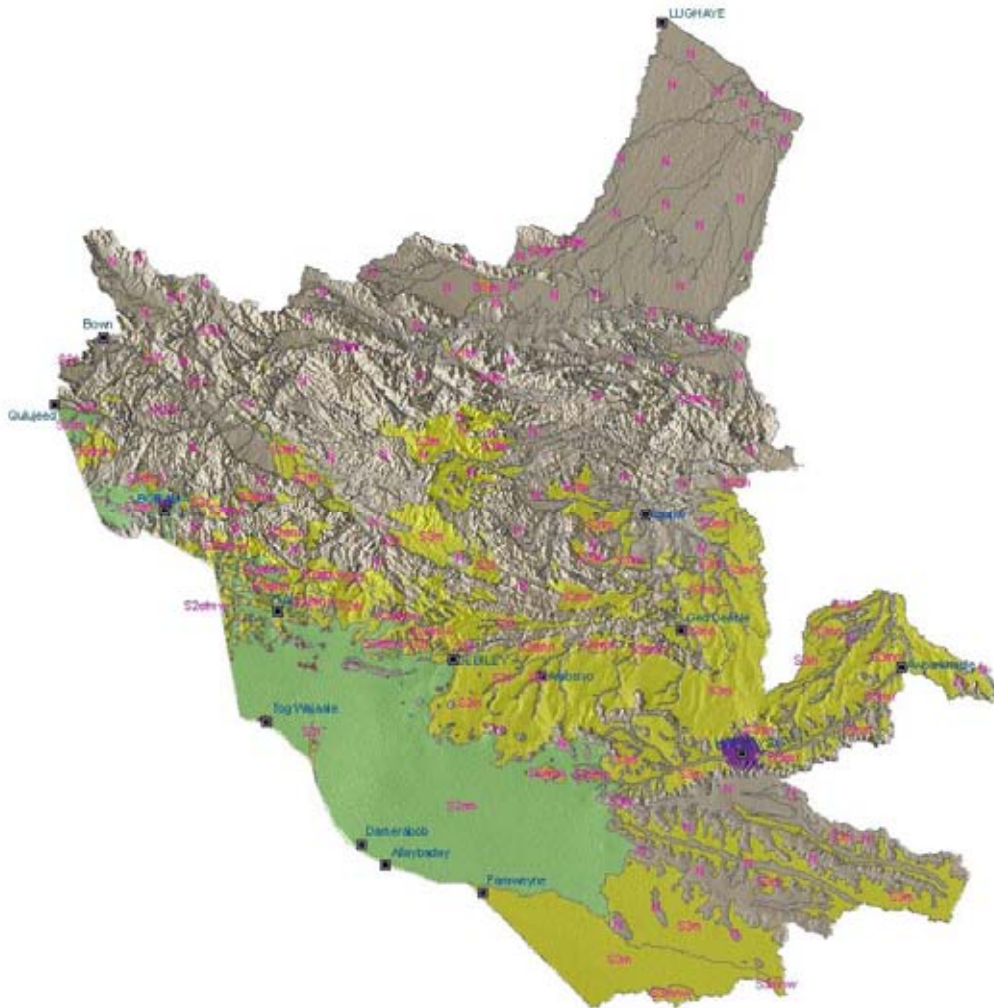




Land Suitability Assessment of a Selected Study Area in Somaliland



Project Report No. L-06

July 2007

Somalia Water and Land Information Management
Ngecha Road, Lake View. P.O Box 30470-00100, Nairobi, Kenya.
Tel +254 020 4000300 - Fax +254 020 4000333,
Email: enquiries@faoswalim.org Website: <http://www.faoswalim.org>.



The designations employed and the presentation of material in this information product do not imply the expression of any opinion whatsoever on the part of the Food and Agriculture Organization of the United Nations concerning the legal status of any country, territory, city or area or of its authorities, or concerning the delimitation of its frontiers or boundaries.

This document should be cited as follows:

Venema, J.H. and Vargas, R.R. 2007. Land Suitability Assessment of a Selected Study Area in Somaliland. FAO-SWALIM Technical Project Report L-06. Nairobi, Kenya.

TABLE OF CONTENTS

List of Acronyms

Acknowledgment

1	INTRODUCTION.....	1
2	STUDY AREA.....	1
2.1	Location and delineation.....	1
2.2	Climate.....	1
2.3	Geology/Lithology	2
2.4	Landform and Soils.....	2
2.5	Land cover	5
2.6	Land Use.....	5
2.6.1	Rainfed Agriculture	5
2.6.2	Irrigated Orchards	5
2.6.3	Transhumance Pastoralism.....	6
2.6.4	Hay Production and Grazing	7
2.6.5	Wood Collection for Charcoal Burning	7
2.6.6	Sedentary-Pastoralism	7
2.7	Population.....	7
3	MATERIALS.....	10
3.1	Land Resources data.....	10
3.1.1	Simplified Soil Grouping for Land Evaluation	10
3.1.2	Length of Growing Period (LGP) and rainfall variability	10
3.1.3	Temperature classes	10
3.1.4	Simplified Landform information for Land Evaluation.....	14
3.1.5	Simplified Landcover information for Land Evaluation.....	15
4	METHODS.....	16
4.1	Somalia Automated Land Evaluation System (SOMALES)	16
4.1.1	Objectives and principles of land evaluation.....	16
4.1.2	Resource Base Units.....	17
4.1.3	Land qualities and land characteristics	18
4.1.4	Land use types and their requirements	18
4.1.5	Matching land qualities with land use requirements	23
4.1.5.1	Factor ratings; severity levels; limitations	23
4.1.5.2	Decision trees, scoring.....	23
4.1.6	Land suitability classification	24
4.1.7	Verification of preliminary results	24
5	RESULTS	25
5.1	Land suitability for rainfed agriculture	25
5.2	Land suitability for irrigated agriculture (orchards)	32
5.3	Land suitability for extensive grazing (pastoralism)	33
5.4	Land suitability for forestry.....	40
5.5	Summary of suitability for the major types of land use	50
6	FURTHER DEVELOPMENT OF LAND EVALUATION PROCEDURE	51
7	BIBLIOGRAPHY.....	52

List of Annexes

Annex 1: Resource Base Units.....	55
Annex 2: Resource Base Units, subsoil properties.....	59
Annex 3: Crop requirements	60
Annex 4: Requirements forestry species	60
Annex 5: Use forestry species	62
Annex 6: SOMALES: Severity level decision trees for Rainfed Agriculture.....	63
Annex 7: SOMALES Severity level decision trees for Pastoralism	77
Annex 8: SOMALES: Severity level decision trees for Forestry.....	85

List of Tables

Table 1: Crop Calendar Rainfed Agriculture	6
Table 2: Regions, districts, and their populations (Somalia UNDP 2005, draft version).....	7
Table 3: Simplified Soil Classes for Land Evaluation.....	11
Table 4: Soil characteristics used for Land Evaluation	12
Table 5: Length of longest LGP and rainfall variability during GP for all LGP Zones of Somalia.....	13
Table 6: Total LGP and annual rainfall variability of the 15 LGP Zones of Somalia.....	13
Table 7: Estimated carrying capacity of Bioclimatic Zones and corresponding LGP Zones	14
Table 8: Mean annual temperature classes for Somalia and correlation with altitude zones.....	14
Table 9: Simplified relief classes for land evaluation	14
Table 10: Slope classes for land evaluation	15
Table 11: Aggregated landcover classes of study area for land evaluation.....	15
Table 12: Diagnostic Land Qualities for selected major types of land use	22
Table 13: Land Use Types.....	22
Table 14: Land Suitability for Rainfed Agriculture	26
Table 15: Land Suitability for Rainfed Agriculture (summary).....	27
Table 16: Estimated total area of irrigable land in study area.....	32
Table 17: Land Suitability for Extensive Grazing.....	34
Table 18: Land Suitability for Extensive Grazing (summary)	35
Table 19: Land Suitability for Forestry.....	41
Table 20: Land Suitability for Forestry (Summary)	43

List of Figures

Figure 1: Study area.....	1
Figure 2: Rainfall distribution and climate classification of the study area.....	3
Figure 3: Rainfall (P), Potential Evapotranspiration (PET) and 0.5PET	4
Figure 4: Methodological framework.....	17
Figure 5: Identification of the RBU's.....	18

List of Maps

Map 1: Land Use	9
Map 2: Resource Base Units.....	21
Map 3: Land suitability for Rainfed Agriculture: sorghum.....	29
Map 4: Land suitability for Rainfed Agriculture: maize.....	31
Map 5: Land suitability for Extensive Grazing: camels.....	37
Map 6: Land suitability for Extensive Grazing: goats.....	39
Map 7: Land suitability for Forestry: Azadirachta indica (neem).....	45
Map 8: Land suitability for Forestry: Acacia nilotica (maraa)	47
Map 9: Land suitability for Forestry: Conocarpus lancifolius (dhamas, ghalab).....	49

List of acronyms

ALES	Automated Land Evaluation System
FAO	Food and Agriculture Organization
GIS	Geographical Information System
GP	Growing Period
LCCS	Land Cover Classification System
LC	Land Characteristic
LGP	Length of Growing Period
LQ	Land Quality
LUR	Land Use Requirement
LUT	Land Use Type
masl	meters above sea level
NGO	Non Governmental Organization
PET	Potential Evapotranspiration
RBU	Resource Base Unit
SOMALES	Somalia Automated Land Evaluation System
SWALIM	Somalia Water and Land Information Management